

Historic, archived document

Do not assume content reflects current scientific knowledge, policies, or practices.

2.61

Economic and Systems for Bulbs
Economic Collections
Rec'd SEP 9 1936
Answered

LIBRARY RECEIVED
☆ JUN 18 1936 ☆
U. S. Department of Agriculture.

HENDERSON'S AUTUMN CATALOGUE 1930



To Know the Joy of Spring Flowers
Plant Bulbs this Fall

PETER HENDERSON & CO., 35 & 37 Cortlandt St., NEW YORK.

COPYRIGHT, 1930, BY PETER HENDERSON & CO., NEW YORK, N.Y.

AUTUMN CATALOGUE

HENDERSON'S "Variety" Collection of NARCISSUS and DAFFODILS for

Fall Planting and Spring Flowering

This collection is appropriately named "The Variety Collection" for it includes seven of the most distinctive types of Narcissus, ranging from the pretty cluster-flowered Poetaz and the single-flowered Poeticus to the large trumpet all yellow and bi-color. They are suitable both for indoor and out-door cultivation.

No.	Price	
	Per Doz.	Per 100
1 Elvira (<i>Poetaz</i>)	\$2.00	\$15.00
2 Helios (<i>Poetaz</i>)	2.00	15.00
3 Olympia (<i>Giant Trumpet</i>)	2.50	18.00
4 Sulphur Phoenix (<i>Double</i>)	2.00	15.00
5 Spring Glory (<i>Trumpet</i>)	2.00	15.00
6 Horace (<i>Poeticus</i>)	2.00	15.00
7 Mme De Graaff (<i>Trumpet</i>)	2.00	15.00

Collection "M" 3 each of above seven varieties..... \$3.50

Collection "N" 6 each of above seven varieties..... 6.50

Collection "O" 12 each of above seven varieties... 12.00

They are all delivered transportation paid.

For description and prices of other Narcissus, see pages 16-17



Important Free Delivery

To Our Customers in the Following

- | |
|---------------|
| Alabama |
| Arkansas |
| California |
| Colorado |
| Florida |
| Georgia |
| Illinois |
| Indiana |
| Iowa |
| Kansas |
| Michigan |
| Minnesota |
| Missouri |
| Nebraska |
| New Hampshire |
| New Jersey |
| New York |

The full details may be obtained from the nearest office of the company.

All Flower Bulbs and Roots by the 50 or hundred price.

Also all varieties of seeds, plants, ferns, and other articles in the catalogue.

Patent: 1,000,000
25 & 27 Central Street

(Please fill in your name and address here)

PUT A
TWO CENT
STAMP
HERE

Name _____
Address _____
Post Office _____
State _____

FROM

Peter Henderson & Co.,

35 and 37 Cortlandt Street,

NEW YORK, N. Y.

Important Free Delivery Notice

To Our Customers in the Following States:

Alabama	Louisiana	North Carolina
Connecticut	Maine	Ohio
Delaware	Maryland	Pennsylvania
District of Columbia	Massachusetts	Rhode Island
Florida	Michigan	South Carolina
Georgia	Minnesota	Tennessee
Illinois	Mississippi	Vermont
Indiana	Missouri	Virginia
Iowa	New Hampshire	West Virginia
Kentucky	New Jersey	Wisconsin
	New York	

*We will deliver free within the States noted above
By Parcel Post, Express or Freight at our option.*

**All Flower Bulbs and Roots by the single, dozen
or hundred price.**

Also all Vegetable Seeds, Flower Seeds and Lawn Grass
Seeds offered in this catalogue.

Purchasers pay or allow for transportation on Bulbs
and Roots by the 1,000, also on Fertilizers, Insecticides, Tools
and Implements. etc.

**Peter Henderson & Co.,
35 & 37 Cortlandt Street, New York.**

HENDERSON'S SPECIAL SELECTION OF VERY POPULAR LATE FLOWERING TULIPS

We strongly recommend this class of Tulips for garden-decoration in beds as well as in groups in the herbaceous border and amongst shrubs. They bloom during the middle of May, a period when flowers, such as Roses and Iris have not yet come in bloom.

Grown for cut-flowers, they prove very valuable for the decoration of rooms. By forcing in pots they may be had in bloom in February or March.

The list of varieties we offer below have been carefully selected and are exquisite sorts.

Plate No.		Per Doz.	Per 100
1	Mrs. Potter Palmer (<i>Darwin</i>). Bright purplish violet, fine large flower.....	\$1.25	\$9.00
2	Dom Pedro (<i>Breeder</i>). Coffee brown on a cadmium-yellow ground, interior dark reddish mahogany, yellowish base streaked olive, filaments olive. A beautiful large fragrant flower. Combines wonderfully with the lighter varieties.....	1.50	12.00
3	Ariadne (<i>Darwin</i>). Brilliant rose-erimson, flushed scarlet, base blue, flower of good form and substance, excellent forcer.....	1.00	7.00
4	Plutarchus (<i>Breeder</i>). Good form and substance, lemon-yellow, outside flamed dull purple, base and filaments greenish..	1.00	7.50
5	Inglescombe Yellow (<i>Cottage</i>). Often called the Yellow Darwin Tulip, large flower of perfect form, glossy canary-yellow, very beautiful.....	.80	6.00
6	Philippe De Comminet (<i>Darwin</i>). Velvety maroon-black, large flower on a strong stem, excellent forcer and bedder..	1.25	9.00
7	Madame Krelage (<i>Darwin</i>). Bright lilae-rose, margined pale silvery rose, inside soft rose-pink, very large flower of grand form, good forcer.....	1.00	7.00
8	Striped Beauty (<i>Cottage</i>). Rose flaked deep crimson and white.....	2.00	15.00

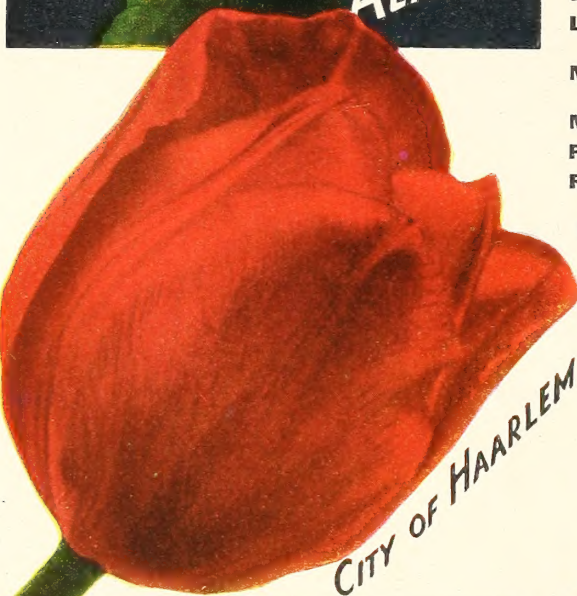
We can supply individual bulbs of varieties described above at one-tenth of the dozen price. Six Bulbs of a Variety Sold at the Dozen Rate, 25 at the Hundred Rate.

"Henderson's Bulb Culture" is a book of 68 pages price 75c. We send it free with bulb orders amounting to \$3.00.



The Aristocrats of Tulipdom

The Cottage and Darwin Tulips comprised in this offering, some of them novelties and others of recent introduction, have all been selected by our experts, while in bloom at our Trial Grounds, as the very best of their colors and shades, from hundreds of other named varieties. Instructions for culture can be found in our pamphlet "How to Grow Bulbs," sent free to all.



	Per Doz.	Per 100
Alaska. (<i>Cottage.</i>) A beautiful, large elongated flower with pointed petals of a golden yellow..... Each 50c.	\$5.00	
Arethusa. (<i>Cottage.</i>) A fine variety of soft pale yellow, large flower on a strong stem and the best yellow sort. Each 30c.	3.00	\$22.00
City of Haarlem. (<i>Darwin.</i>) Immense vermilion scarlet, large blue black base.....	2.00	15.00
Cocarde. (<i>Cottage.</i>) Dazzling red, purplish blue base, handsome flower and one of the best of the new varieties..... Each 50c.	5.00	
Earl William. (<i>Darwin.</i>) Creamy white ageing to pure white, edged crimson..... Each 30c.	3.00	22.00
Jubilee. (<i>Darwin.</i>) (F-24in.) Deep rich blue purple, somewhat egg shaped.....	2.00	15.00
King George. (<i>Darwin.</i>) A large flower, color, brilliant cherry red..	2.00	15.00
La Fiance. (<i>Darwin.</i>) A handsome variety, color, rose shaded mauve edged with light rose.....	1.50	12.00
Marvel. (<i>Cottage.</i>) A fine sort, salmon, rose edged yellow, inside old.....	1.35	10.00
Mystery. (<i>Darwin.</i>) A fine large flower of shining black.....	2.50	20.00
Pulcinella. (<i>Darwin.</i>) A handsome flower of a beautiful bright red..	1.50	12.00
Reve D'Amour. (<i>Darwin.</i>) White spotted carmine changing with age to reddish violet..... Each \$1.50	15.00	
Rosabella. (<i>Cottage.</i>) Beautiful shade of soft rose pink turning lighter towards the edges..... Each 25c.	2.50	18.00
The Bishop. (<i>Darwin.</i>) The finest sort of its color which is a pure violet..... Each 50c.	5.00	

New Fringed Darwin Tulip "SUNDEW"

A beautiful and novel introduction having fringed petals, the color is a brilliant crimson.
Price, Each 30c.; Per doz. \$3.00; Per 100 \$22.00.

Henderson's New Giant Darwin Tulips—General List

These popular late or May-flowering tulips are very stately and beautiful—producing immense flowers on tall sturdy stems attaining a height of from 2 to 3 feet. The flowers are models of perfection in form, lasting wax like substance—and in a great variety of both dainty and richly brilliant colorings ranging from blush through pinks, rose, salmon-red, crimson, etc., to rich ox blood reds, from lavender through mauve light blue to violet purple, and from light brown to black. The centers of many of them are beautifully marked. The Darwins also include good tinted whites—and a clear yellow has been introduced by us this year in our New Yellow Darwin Tulip Mary Eaton, described on page 6. The Darwin Tulips are exceedingly effective when grown in groups of a dozen or more bulbs of one variety in the garden or herbaceous border with a back ground of greenery. As Cut flowers they are unsurpassable. The long stemmed, bold, durable flowers have a dignity and character exclusively their own. Darwin Tulips may be successfully flowered in pots or pans in the house in winter if grown cool and not forced into bloom before March. The varieties marked * are especially good for that purpose.

To aid in making selections of varieties for continuity of bloom, etc., we have indicated their relative time of flowering by the letters E. F. G. H. and I. The E's being the earliest to bloom. The height is also given, but may vary. The bulbs should be spaced about 5 inches apart and base of the bulbs should be 5 to 6 inches deep on heavy soils and 6 to 7 inches deep on light soils.

We can supply individual bulbs of any sort described below at one-tenth of the dozen price. 6 Bulbs of a variety sold at the dozen rate, 25 at the hundred rate.

	Per Doz.	Per 100
Afterglow. (F-26.) Deep rosy orange, salmon tinted edge. Inside deep orange.....	\$1.35	\$10.00
Anton Mauve. (F-25 in.) Deep bluish lilac, enormous flower.....	1.50	12.00
* Anton Roozen. (F-24 in.) Large cup-shaped flower of bright rose pink edged with blush pink, strong grower. \$65.00 per 1,000.....	1.00	7.00
Apple Blossom. (F-26 in.) A beautiful soft rose, fine for forcing.....Each 75c.	7.50	
Ariadne. (F-28 in.) Glowing rose crimson shaded scarlet blue base. \$65.00 per 1,000.....	1.00	7.00
* Baronne de la Tonnaye. (F-26 in.) A long and beautiful flower; clear carmine rose at the mid-rib, toning off to soft pink at the edges. \$65.00 per 1,000.....	1.00	7.00
* Bartigon. (F-22 in.) Large flowers of fiery crimson with white base. \$65.00 per 1,000.....	1.00	7.00
City of Haarlem. (F-26 in.) Immense vermilion scarlet.....	2.00	15.00
* Clara Butt. (G-20 in.) A large flower of remarkable beauty; an exquisite shade of soft salmon pink shaded rose. \$55.00 per 1,000.....	.80	6.00
Dream. (F-27 in.) Large cup-shaped flower of heliotrope with silvery lilac margin; blue base. \$70.00 per 1,000.....	1.00	7.50
Duke of Portland. (F-26 in.) Brilliant cerise red, extra fine.....	1.50	12.00
Earl William. (F-28 in.) Creamy white ageing to pure white, edged crimson.....Each 30c.	3.00	22.00
Eclipse. (F-25 in.) Dark red, chestnut color.....	2.00	15.00
Flamingo. (G-26 in.) Lovely flesh pink, tinted rose; distinct color.....	1.25	9.00
Giant. (E-28 in.) Deep purplish violet, enormous flower.....	2.00	15.00
Harry Veitch. (E-24 in.) Brilliant blood-red with blue base; splendid for borders and also for forcing. \$65.00 per 1,000.....	1.00	7.00
Jacob Maris. (G-28 in.) Maroon, dark center bordered white.....	1.50	12.00
Jubilee. (F-24 in.) Deep rich blue purple, somewhat egg shaped.....	2.00	15.00
King George V. (F-25 in.) Brilliant cherry red, very large flower.....	2.00	15.00
* King Harold. (G-24 in.) Large flower, dark glossy blood-red shaded maroon. \$65.00 per 1,000.....	1.00	7.00



The Varieties Illustrated Above
 2 *Pride of Haarlem.* Rosy red, shade scarlet.
 4 *La Tristesse.* Slaty lavender tinted rose.
 6 *Zulu.* Rich violet black.
 All described on page 6.

"Henderson's Bulb Culture" is a book of 68 pages price 75c. We send it free with bulb orders amounting to \$3.00.

Henderson's New Giant Darwin Tulips—Continued

	Per Doz.	Per 100
La Fiancee. (G-28 in.) Rose shaded mauve, edged light rose	\$1.50	\$12.00
La Tristesse. (G-26 in.) Bluish slate color, white base; very distinct	1.35	10.00
* La Tulip Noire. (<i>The Black Tulip.</i>) (G-24 in.) The "blackest" of all Tulips; a large broad flower of glossy black; high lights maroon	1.35	10.00
* Madam Krelage. (F-28 in.) A grand flower of purplish rose, broadly margined with blush-pink, white base. \$65.00 per 1,000	1.00	7.00
Mary Eaton. Beautiful sunflower yellow, base and anthers yellow	Each \$1.00	10.00
Massachusetts (F-24 in.) A long-stemmed flower of vivid pink \$70.00 per 1,000	1.00	7.50
Massenet. (G-28 in.) Soft appleblossom, flushed white	1.25	9.00
May Queen. (G-25 in.) Large flower of bright rose, center blue and white. \$65.00 per 1,000	1.00	7.00
* Mr. Farnscomb Sanders. (F-26 in.) Brilliant orange-scarlet, extra fine. \$65.00 per 1,000	1.00	7.00
Mrs. Potter Palmer. (<i>Fashion.</i>) (G-24 in.) A beautiful large new variety of deep rich violet-purple with a bluish sheen on the outer petals	1.25	9.00
Mystery. (G-22 in.) Shining black, large flower	2.50	20.00
* Nauticus. (E-30 in.) A large handsome flower of deep cherry-rose, center violet shaded bronze. \$65.00 per 1,000	1.00	7.00
Orange Perfection. (F-26 in.) Fiery salmon orange changing with age to scarlet	Each 35c.	3.50 25.00
* Painted Lady. (H-26 in.) One of the best of the white Darwins. \$70.00 per 1,000	1.00	7.50
Ph. de Commimet. (E-24 in.) A grand flower of dark polished mahogany	1.25	9.00
President Taft. (G-26 in.) Dark scarlet red, inside lighter	1.50	12.00
* Pride of Haarlem. (F-26 in.) Magnificent flower of immense size; coloring brilliant salmon rose-shaded with scarlet; electric blue base. \$65.00 per 1,000	1.00	7.00
Prince of the Netherlands. (F-26 in.) Deep cerise rose margined pink light blue base, large flower. \$70.00 per 1,000	1.00	7.50

HENDERSON "BORDER" COLLECTION OF DARWIN AND BREEDER TULIPS (shown in colors on back cover)

These eight Darwin and Breeder Tulips have been selected from among thousands grown at our Experimental Farms, as making the best and most varied display.

- C. Afterglow** (Darwin). (F-26 in.) Deep rosy orange, salmon tinted edge. Inside deep orange.
- F. La Fiancee** (Darwin). (G-28 in.) Rose shaded mauve, edged light rose.
- H. Mr. Farnscomb Sanders** (Darwin). A large flower of perfect shape, vivid orange, scarlet with white base.
- A. Harry Veitch** (Darwin). (E-24 in.) Brilliant blood-red with blue base; splendid for borders and also for forcing.
- B. Rev. B. Ewbank** (Darwin). (F-20 in.) A large broad flower of silvery lavender shading towards the center into bluish-heliotrope.

	Per Doz.	Per 100
Prince of Wales. Dazzling red enormous flower	\$2.00	\$15.00
Princess Elizabeth. Soft lilac rose, edges of paler shade, white base. \$65.00 per 1,000	1.00	7.00
Princess Juliana. (F-28 in.) Dazzling orange-red, flushed salmon and blue base. \$70.00 per 1,000	1.00	7.50
Psyche. (G-28 in.) A very large flower of rich rose color; inside shaded silvery rose. Center pale blue. \$70.00 per 1,000	1.00	7.50
Pulcinella. (F-24 in.) Beautiful bright red, handsome flower	1.50	12.00
Reve D'Amour. (F-24 in.) White spotted carmine changing with age to reddish violet	Each \$1.50	15.00
Rev. H. Ewbank. (F-20 in.) A large broad flower of silvery lavender shading towards the center into bluish-heliotrope. \$70.00 per 1,000	1.00	7.50
Sir Trevor Lawrence. (F-28 in.) Reddish violet shaded lilac, enormous flower	1.50	12.00
Sundew. (F-16 in.) The fringed Darwin, color crimson	Each 30c.	3.00 22.00
The Bishop. (F-27 in.) Pure violet, good for forcing	Each 50c.	5.00
Viola (Purple King). (F-24 in.) Beautiful purplish violet, large flower	1.25	9.00
Whistler. (F-24 in.) Vivid maroon, crimson blue base, edged white extra large flower. \$70.00 per 1,000	1.00	7.50
White Queen. (F-24 in.) Pure white faintly flushed with bluish in places. \$70.00 per 1,000	1.00	7.50
* William Copeland. (E-26 in.) Delicate lavender. The best early forcing variety. \$70.00 per 1,000	1.00	7.50
* William Pitt. (F-26 in.) One of the largest and grandest of the Darwins; brilliant carmine, center of petals over-spread with dark red. \$70.00 per 1,000	1.00	7.50
* Zulu. (F-26 in.) Large flower of rich violet black	1.25	9.00
Grand Mixture of Darwin Tulips. Great variety of all colors and shades. \$35.00 per 1,000	.60	4.00

thousands grown at our Experimental Farms, as making the best and most varied display.

- G. Zulu** (Darwin). (F-26 in.) Large flower of rich violet black.
- E. Louis XIV** (Breeder). A unique variety of striking beauty, dark purple flushed golden bronze with a margin of golden brown.
- D. Prince of Orange** (Breeder). A beautiful variety of orange yellow with a terra-cotta stripe through the center of petals.

PRICES OF COLLECTIONS

COLLECTION "A"	24 Bulbs,	3 each,	8 Varieties	\$2.25
"B"	96 "	12 "	8 "	8.00
"C"	400 "	50 "	8 "	30.00



Don't Miss this Special Offer!

100 DARWIN TULIPS \$4.00

Choice, first size bulbs, sure to bloom. Henderson's Special Mixture made up especially by us from the finest varieties—A \$6.00 value for only \$4.00.

The proper depth and distance apart to plant bulbs is shown in our booklet, "How to Grow Bulbs," sent free.

Cottage Tulips

HENDERSON'S LATE OR MAY FLOWERING

Cottage Tulips are so-called because found growing in the old cottage gardens of England, Scotland, Ireland and France where they had been established for 50 years or more. All are very beautiful, presenting a great variety in form and coloring, and having none of the stiffness of other tulips. For cutting they are greatly prized on account of their long stems and graceful habit. Being extremely hardy they are specially adapted for hardy flower borders, where they should be planted in large clumps and masses. To aid in making selections for continuity of bloom, etc., the relative time of flowering is indicated by the letters E, F, G, H and I. Those marked E being the earliest. Those marked I are the latest to bloom. The normal height is also given in inches. In planting the bulbs should be placed 5 inches apart and the bottom of the bulb should be 6 to 7 inches below the surface in light soils and 5 to 6 inches deep in heavy soils. If planted too shallow some may come blind. The varieties marked * are especially good for winter flowering and forcing.

	Per	Per
	Doz.	100
Adonis. (G-21 in.). (<i>Lily Flowered.</i>) Long shapely reflexed petals, bright and vivid, rosy carmine red, white base.	\$1.00	\$7.50
Alaska. (H-20 in.). A beautiful, large elongated flower with pointed petals of a golden yellow.	5.00	5.00
Alcmene. (G-18 in.). A fine oblong flower of a soft carmine red	1.50	12.00
Amber. (F-18 in.). An excellent round flower of unique coloring, terra cotta, shaded amber, base yellow and blue.	1.25	9.00
Ambrosia. (G-26 in.). A beautiful new variety, color lilac rose, inside salmon orange.	2.50	18.00
Arethusa. (H-28 in.). A fine variety of a soft pale yellow, large flower on a strong stem and the best yellow. Each 30c.	3.00	22.00
Argo. (F-26 in.). A unique color, golden yellow spotted orange.	1.50	12.00
Barbara Pratt. (G-30 in.). Light carmine, edged lilac rose, slightly reflexed, fine for exhibition. Each \$1.50	15.00	
*Bouton d'Or. (F-17 in.). Rich deep golden yellow; a large, long-stemmed, globular flower of finest substance; unequalled for cutting and fine for late forcing. \$65.00 per 1,000	1.00	7.00
Carrara. (F-24 in.). Pure white with faint grey markings at base of petal, good form and substance. Each 25c.	2.50	18.00
Cocarde. (F-28 in.). Dazzling red, purplish blue base, handsome flower and one of the best of the new varieties. Each 50c.	5.00	
Coronation Scarlet. (H-21 in.). Brilliant scarlet with dark base; large flower.	1.00	7.50
Dido. (G-26 in.). Orange red changing to orange yellow, inside orange. Each 30c.	3.00	22.00
Dulcinea. (F-21 in.). A fine vivid red inside glowing orange red, excellent for forcing.	1.35	10.00
Elegans Alba. (<i>White Crown.</i>) (F-20 in.). Large reflexing flower of white with a sharply defined-margin of carmine-rose	2.00	15.00
Elegans Red. (E-14 in.). Brilliant vermilion with yellow center; a long flower with reflexing petals.	1.50	12.00
*Fairy Queen. (G-20 in.). A very large and beautiful flower of rosy heliotrope, broadly margined with yellow. \$65.00 per 1,000	1.00	7.00
Fawn. (H-21 in.). Fawn tinged yellow with silvery dove gray; large. \$65.00 per 1,000	1.00	7.00
Flava. (H-22 in.). Creamy yellow, large flower on stiff stem, good for mixing with Darwins.	2.50	18.00
*Fulgens Red. (F-24 in.). Long reflexing petals of glowing vermilion; creamy-white center.	1.25	9.00
Gesneriana Major. (G-24 in.). Crimson scarlet with violet black center, large flowers; effective for beds and borders. \$65.00 per 1,000	1.00	7.00
Gesneriana Lutea. (H-24 in.). Finely formed flower of full rich yellow. \$55.00 per 1,000	.80	6.00
Glare of the Garden. (G-18 in.). (<i>Maculata Globosa Grandiflora.</i>) A large flower of glowing dark crimson-scarlet; center black edged yellow; petals long, the outer ones reflexing. . .	1.00	7.50
Illuminator. (G-26 in.). Yellow flaked red, extra fine flower.	1.50	12.00
Inglescomb Pink. (F-24 in.). (<i>Salmon Queen.</i>) Beautiful large egg-formed flowers of bright rose-pink with a salmon sheen. \$55.00 per 1,000	.80	6.00
Inglescomb Scarlet. (H-20 in.). Brilliant vermilion with a black base. \$65.00 per 1,000	1.00	7.00
*Inglescomb Yellow. (H-18 in.). Flower of perfect form; color full rich yellow. \$55.00 per 1,000	.80	6.00
Isabella. (F-15 in.). Opening creamy white shaded and mottled with pink, which changes with age to rose. \$65.00 per 1,000	1.00	7.00
John Ruskin. (G-18 in.). A large flower of apricot pink with a border of canary yellow flushing into the ground; beautiful and rare. \$65.00 per 1,000	1.00	7.00
Le Merveille. (I-18 in.). A magnificent variety, flowers of great size and elegantly pitcher shape when closed. Coloring salmon rose shot orange red and having a yellow center; fragrant. \$65.00 per 1,000	1.00	7.00
La Reve. (D-12 in.). (<i>Hobbema.</i>) Large globular flower of an exquisite art coloring, soft rose, apricot and chamois glow.	1.35	10.00
Marvel. (G-24 in.). A fine sort, salmon, rose edged yellow, inside old gold.	1.35	10.00
*Miss Wilmott. (H-18 in.). Splendid large, long flowers on straight tall stems; open primrose yellow, but soon assume a bright yellow color. \$70.00 per 1,000	1.00	7.50
*Mrs. Moon. (H-24 in.). A magnificent and immense tulip of rich orange yellow; a famous Parisian boulevard tulip.	1.25	9.00
Moonlight. (D-24 in.). A beautiful elongated flower, color sulphur yellow. \$70.00 per 1,000	1.00	7.50



Cottage Tulips—Continued

	Per Doz.	Per 100
Nathalie May. (G-26 in.). Sulphury white, with small crimson spots, tall and graceful.....Each 50c.	\$5.00	
Orient. (G-26 in.). Carmine-rose, orange toward edges, inside salmon rose.....Each 30c.	3.00	
*Parisian White. (F-15 in.). (<i>La Candeur</i> ; <i>Snowdon</i> .) Pure white changing to silvery-pink. \$70.00 per 1,000.	1.00	7.50
Parisian Yellow. (I-20 in.). (<i>Annie</i> .) Large handsome clear yellow flowers with pointed petals. \$70.00 per 1,000	1.00	7.50
Picotée. (G-20 in.). (<i>Maiden's Blush</i> .) An elegant flower with recurved petals; pure white with a picotée margin of rose-pink. \$65.00 per 1,000.	1.00	7.00
Pride of Inglescomb. (F-24 in.). Beautiful long pointed flowers, white edged carmine rose.....	1.75	14.00
*Primrose Beauty. (I-16 in.). Elegantly formed flower opening soft primrose yellow changing to cream color lightly edged with rose.....	1.00	7.50

Rembrandt Tulips

These late or May-flowering garden tulips form a new class of stately beauty. They are in reality Darwin Tulips which have "broken" into permanent variegations—the flowers of various rich colors being striped, blotched and marked with different shades and colors. The flowers, large, of perfect form and lasting substance are borne on sturdy stems about two feet in height. These Rembrandts are very effective planted in groups in the herbaceous or shrubbery border and will remain 3 or 4 years without replanting. The cultural directions given for Darwin Tulips apply to these.

Choice Mixed Varieties...... Per doz., \$1.00; per 100, \$7.50

	Per Doz.	Per 100
Rosabella. (G-26 in.). Beautiful shade of soft rose pink turning lighter towards the edges.....Each 25c.	\$2.50	\$18.00
Royal White. (E-12 in.). Large long flower of white touched with primrose through the outside center of petals, a fine tulip.....	1.35	10.00
Scarlet Emperor. (G-21 in.). Glowing scarlet, clear yellow center, extra.....	1.50	12.00
Siren. (F-21 in.). (<i>Lily Flowered</i> .) Rich cerise pink, reflexed petals.....	1.00	7.50
Sir Harry. (G-20 in.). Beautiful lavender pink.....	1.25	9.00
Striped Beauty. (I-20 in.). (<i>Summer Beauty</i> .) Rose flaked crimson and white; large and showy flowers on tall stems.....	2.00	
Triton. (G-18 in.). A long shaped flower of dazzling carmine, base pure yellow with blue edge.....	1.00	7.00
*Vitellina. (G-22 in.). Large canary yellow flowers of exquisite beauty.....	1.25	9.00
Grand Mixture of Old English Cottage Tulips. Including sweet-scented sorts. Many different varieties.....Per 1,000, \$35.00	.60	4.00

We can supply individual bulbs of any of the sorts described above at one-tenth of the dozen price.

Bybloemen Tulips

Like the Bizarre varieties these tulips were evolved at the time of the Tulipomania which swept Holland and neighboring European countries early in the seventeenth century. They have been grown and sold quite largely in European countries ever since, and to a lesser extent in America; but are considered by many to be too gay for large plantations.

Nevertheless, for indoor decoration, in the month of May when they bloom, their vivid and contrasting colors are very welcome. For outdoor borders, and for planting among the perennials, there is nothing better; as they impart gay coloring much wanted at that time.

The "Rose" Bybloemen tulips are those marked with crimson, rose, pink and scarlet on a white ground, and the "Violet" Bybloemen are those marked with blue, purple and violet also on a white ground.

They flower at the same time as the Darwin and Breeder varieties, and the culture is the same; but the stems are not so long, averaging not more than twenty inches. (See engraving.)

Rose Bybloemen Tulips, Choice Mixed Varieties	Per Doz.	Per 100
Violet Bybloemen Tulips, Choice Mixed Varieties	\$1.00	\$7.50

We can supply individual bulbs of varieties described above at one-tenth of the dozen price.

Tulip Clusiana

The Little Lady Tulip. A beautiful dwarf variety suitable for perennial borders and rockeries, should be planted two inches apart each way. Color white with cherry stripes. Price, \$1.25 per doz.; \$9.00 per 100; \$85.00 per 1,000.

Bizarre Tulips

One of the oldest races of Tulips, grown extensively in Europe during the seventeenth century. It is this class that is credited as being responsible for the famous tulip craze in 1635. Bizarre Tulips are all queerly striped and variegated; they belong to the May flowering group, and flower on tall stems.

Choice Mixed Varieties. Yellow ground colors, variegated with crimson, purple, white lips.....Per doz., \$1.00; per 100, \$7.00

Parrot or Dragon Tulips

These belong to the late garden tulips, and have immense attractive flowers of singularly picturesque form and brilliant and varied colors. The petals are curiously fringed or lacinated on the edges, and the form of the flower, especially before it opens, resembles the head and neck of a parrot. Only the strongest bulbs of Parrot Tulips can be depended upon to flower. The smaller, younger bulbs often throw no flowers—or at best produce weak, sprawling stems. Our bulbs are the best Holland produces. (See engraving.)

Fantasy. (*Novelty*). This recent product of the Tulip breeder's art originated as a sport from Clara Butt, the well known Darwin Tulip. Clara Butt is esteemed for its beautiful salmon pink color; and this sport Fantasy has inherited the same glorious color, except that the inside of the flower is more intense in color; and borne on stiffer stems, the height is 20 inches.

Each petal besides being elaborately lacinated is marked very distinctly in the center with a streak of apple-green.

This variety is suitable for growing in pots or pans of soil in the window, attracting great attention wherever exhibited. Price, \$1.50 each; \$15.00 per dozen.

Prices of Named Sorts mentioned below.

Per doz., 80c.; per 100, \$6.00; per 1,000, \$55.00

Admiral de Constantinople. Red tipped orange.

Lutea Major. Bright yellow.

Monstre Cramoise. Deep crimson, black center.

Perfecta. Yellow striped red.

Markgraff von Baden. Yellow, scarlet and green.

Choice Mixed Varieties. Per doz., 70c.; per 100, \$5.00; per 1,000, \$45.00



Old Dutch Breeder MAY FLOWERING GARDEN TULIPS

The vogue for this glorious type of the large late May flowering Tulips is gaining great impetus, through the introduction of many of the exquisite new varieties, described in the list below.

The Old Dutch Breeder Tulips appeal to all tulip lovers on account of their sturdiness, large size, and beautiful "art colors." In size they even outrival the popular Darwins. Under favorable conditions many sorts will grow over two and one half feet high and bear enormous flowers of ideal form and great substance.

The colors of these tulips are most fascinating; including solid art colors (such as bronze, brown, buff, terra cotta) as well as many combinations of colors that are unsurpassably beautiful.

When planting the bulbs in the garden, they should be spaced about 5 inches apart and covered from 4 to 6 inches depending upon the nature of the soil.

They may also be flowered in pots or pans of soil or fibre in the house in winter if brought in from the cold frame or out-door plunge before the middle of January and then grown on cool and slowly in a temperature of about 60). The early flowering ones—those marked F and G—will then flower in February and March—the later ones requiring a little more time. Too much heat is apt to cause them to grow spindling and inferior.

Old Dutch Breeder Tulips

	Per Doz.	Per 100
Alice. (G-22 in.). Deep havana brown, finely shaped flower.	\$1.50	\$12.00
Apricot. (G-25 in.). Deep orange-bronze suffused with ruddy apricot. .	1.35	10.00
Bronze Queen. (G-26 in.). Soft buff tinged with golden-bronze.	1.00	7.00
Cardinal Manning. (G-28 in.). Claret-red with rosy bronze sheen. . . .	1.00	7.00
Coridion. (G-24 in.). Clear yellow with lilac stripe through center of petals.	2.00	15.00
Dom Pedro. (G-24 in.). Brown shaded maroon, fragrant.	1.50	12.00
Gerarda. (G-24 in.). Brownish-orange; gold-orange inside; fragrant. . .	1.00	7.00
Heloise. (G-25 in.). Purplish red, with yellow center, edge olive.	2.00	15.00
Jaune d'Ceuf. (Sunrise). (H-24 in.). Bronzy yellow-tinged orange. .	1.00	7.50
Lord Byron. (G-24 in.). Very large perfect flower of rich purplish-red .	1.50	12.00
Louis XIV. (G-27 in.). Dark purple, flushed golden bronze. Very striking.	1.35	10.00
Lucifer. (G-27 in.). Large reddish orange, a fine large flower.	2.00	15.00
Mahony. (G-18 in.). Magnificent large flower of rich mahogany brown.	1.00	7.50
Marie Louise. (G-23 in.). Very beautiful; old rose flushed orange-salmon.	1.00	7.00
Medea. (G-27 in.). Very beautiful orange-red.	1.00	7.00
Peter III. A new sort having all the good points of its class, it is also remarkable for its coloring which is quite a departure from the usual coloring of Breeder Tulips. The center is yellow, and the broad petals are orange-red flushed with auburn.	2.50	18.00
Plutarchus. (G-25 in.). Bronze, shaded lilac.	1.00	7.50
Prince of Orange. (G-26 in.). Terra-cotta with orange edge.	1.35	10.00
Vulcan. (G-25 in.). Strawberry red with buff; yellow margin inside apricot shade.	1.50	12.00
Yellow Perfection. (F-24 in.). Bright bronzy-yellow; large flower. . .	1.00	7.50
Breeder Tulips Mixed from Named Varieties Per 1,000, \$45.00.75	5.00

Triumph Tulips

Triumph Tulips originated from crosses between Darwin and Early Tulips continued over a number of years, and are therefore the results of much painstaking effort by the breeders. They are sturdy and strong growers and have large and heavy flowers on strong stems. They bloom from one to two weeks ahead of the Darwin Tulips.

Colorado. Opens pale yellow with giant crimson marks but changes into a fiery orange, very attractive.25c. each; \$2.50 doz.
Descartes. Light lemon yellow, edges a darker yellow, pointed reflexed petals.	15c. each; \$1.50 doz.
Lord Carnarvon. Petals white with violet rose margin changing to wine red as the flower ages.	20c. each; \$2.00 doz.
Luna. Light primrose yellow, with darker yellow center.	20c. each; \$2.00 doz.
Missouri. Dark glowing wine red, large flowers on long stems.	20c. each; \$2.00 doz.
Mount Lowe. Fine large pink, good for forcing.	30c. each; \$3.00 doz.
U. S. A. Orange-red with light orange edges.	20c. each; \$2.00 doz.

"The Tulip Bulbs I received this fall were the finest I ever saw."

Mrs. C. E. Beckwith, Manchester Center, Vt.

"We have a wonderful display of Darwin Tulips. We have dealt with this company for over 40 years so you will understand everything has given satisfaction and have recommended it far and wide."

Carrie McCrory, Fayette City, Pa.

"My Tulips were wonderful this year, and I have room for a few more."

Mrs. Frank F. Gow, Schuylerville, N. Y.





HENDERSON'S Superior Double Early Tulips

Named Varieties including some Beautiful Novelties

The letter A, B, C, etc., following the varieties indicate their earliness of bloom, the A's flower together and are the earliest; B's follow before the A's are out of bloom, etc. The height is indicated in inches to aid in arranging flower beds. When bedded it is generally advisable to use only one variety to a bed for best effect. The bulbs are planted 5 to 6 inches apart—and the depth should be according to the soil, in heavy soils 3 to 4 inches to the base of the bulbs and in light soils an inch or so deeper. Instructions for forcing in pots for Winter blooming will be found in our leaflet "How to Grow Bulbs" sent free with every order.

	Per Doz.	Per 100
Boule de Neige. (B-10 in.). Magnificent large peony-like flowers of pure white; forces splendidly. \$70.00 per 1,000.	\$1.00	\$7.50
Crown of Gold. (B-10 in.). (<i>Couronne d'Or.</i>) Large flower, very double, rich golden-yellow, orange. A fine garden tuli and one of the best double yellows for winter forcing. \$85.00 per 1,000.	1.25	9.00
Crown of Roses. (B-10 in.). (<i>Couronne des Roses.</i>) A magnificent tulip; large, very double rose-carmine color, shaded cerise, fine bedder. \$70.00 per 1,000.	1.00	7.50
Gloria Solis. (B-14 in.). A grand flower, deep crimson, with broad golden margin, very large. \$85.00 per 1,000.	1.25	9.00
Golden Giant. (B-12 in.). Largest and finest double golden yellow. 50c. Each	5.00	
Imperator Rubrorum. (B-12 in.). Splendid bright scarlet, yellow base, a fine full double. A fine Tulip for bedding and the finest of all double scarlets for forcing for winter flowers.	1.35	10.00
La Candeur. (C-10 in.). Pure white, very large, good for bedding. \$65.00 per 1,000.	1.00	7.00
La Matador. (C-12 in.). A grand large double tulip of glowing scarlet. \$85.00 per 1,000.	1.25	9.00
Lac Von Haarlem. (C-12 in.). A large, very double tulip of conspicuous rosy violet; a brilliant and unique shade.	1.35	10.00
Mount Tacoma. (B-12 in.). Large double tulip of the purest white, good bedder. 50c. Each	5.00	
Mr. Van Tubergen. (B-10 in.). Beautiful strong full double flowers, color golden yellow.	1.50	12.00
Mr. Wentholt. (B-12 in.). Purplish violet, good for forcing. 50c. Each	5.00	
Murillo. (<i>Albino.</i>) (B-10 in.). Magnificent blush white, shaded rose, large full double flowers; the finest double light pink for garden beds and unrivalled for winter flowering, forcing very easily. \$55.00 per 1,000.	.80	6.00
Mystery of India. (B-12 in.). Terra cotta and orange, shaded pink, very large.	1.25	9.00
Rose d'Amour. (C-10 in.). Medium-sized double flowers of blush pink changing with age to deeper rose-pink, a lovely color.	1.50	12.00
Rubra Maxima. (B-10 in.). Dark, dazzling carmine-scarlet, lower half outer petals flamed with green. \$85.00 per 1,000.	1.25	9.00
Safrano. (<i>Sulphur Beauty, Brimstone or Tea Rose.</i>) (B-12 in.). A beautiful new large flowering double tulip, opening pale yellow flushed salmon, but developing, a rosy apricot color. \$65.00 per 1,000.	1.00	7.00
Salvator Rosa. (B-12 in.). Beautiful deep rose flamed with blush; a fine large double flower suitable for either gardens or forcing. \$85.00 per 1,000.	1.25	9.00
Schoonard. (B-12 in.). A beautiful large double snow-white sport of Murillo. The best double white. \$70.00 per 1,000.	1.00	7.50
Titian. (C-12 in.). Rich deep scarlet with a golden edge.	1.50	12.00
Toreador. (B-10 in.). Reddish-orange with rich yellow border; a splendid large, very double flower.	1.50	12.00
Tournesol. (B-10 in.). Splendid showy Tulip, bright scarlet with broad yellow tips and yellow base. The easiest double Tulip to force.	1.35	10.00
Tournesol, Yellow. (B-12 in.). Bright golden yellow, shaded orange. Very fine and showy flower, forces well. One of the finest double. \$85.00 per 1,000.	1.25	9.00
Triumphator. (B-12 in.). Beautiful rosy pink, good for forcing.	1.50	12.00
Vuurbaak. (B-11 in.). Fiery orange-scarlet very brilliant and handsome. \$85.00 per 1,000.	1.25	9.00

Henderson's Special—Rainbow Mixture of Double Early Tulips

Mixed by ourselves from named sorts, proper portions of bright colors, all blooming together and of uniform height; extra fine bulbs, much superior to the ordinary mixtures, which are too often made up of surplus varieties and seconds regardless of bedding effect. Price, 60c. per doz.; \$4.50 per 100; \$40.00 per 1,000. 250 sold at the 1,000 rate.

We can supply individual bulbs of any of the sorts described at one-tenth of the dozen price.

Six Bulbs of a Variety Sold at the Dozen Rate, 25 at the Hundred Rate

HENDERSON'S SUPERIOR Single Early Tulips Named Varieties

The letters A, B, C, etc., following the varieties indicate their earliness of bloom, the A's flower together and are the earliest, B's follow before the A's are out of bloom. The height is indicated in inches to aid in arranging flower beds.

	Per Doz.	Per 100
Albion (White Hawk). (C-12 in.). Very large snow white flowers; one of the finest whites for either bedding or forcing. \$70.00 per 1,000.	\$1.00	\$7.50
Apollo. (B-16 in.). A magnificent new variety; flowers of dark blood red.	1.50	12.00
Artus. (B-10 in.). Bright red, fine bold flowers, dwarf; good for bedding. \$55.00 per 1,000.	.80	6.00
Belle Alliance (Waterloo). (B-10 in.). Brilliant large flower. \$70.00 per 1,000.	1.00	7.50
Cardinal Rampollo. (B-11 in.). A fine large flower of yellow bordered with orange, a striking combination.	1.50	12.00
Chrysolora. (B-12 in.). Pure golden yellow, large handsome flower; one of the best for bedding. \$85.00 per 1,000.	1.25	9.00
Cottage Maid (La Precieuse). (C-9 in.). Carmine pink, center of petals feathered white. \$70.00 per 1,000.	1.00	7.50
Couleur Cardinal. (D-12 in.). Brilliant crimson flower of great substance. \$85.00 per 1,000.	1.25	9.00
Cramoise Brilliant. (C-12 in.). Brilliant vermilion scarlet; large flower. \$55.00 per 1,000.	.80	6.00
Crimson King. (B-12 in.). (Roi Cramoise.) Large, bright crimson flowers with yellow base; a showy and popular bedder. \$55.00 per 1,000.	.80	6.00
De Wet (Fireglow). (B-12 in.). A new variety of remarkable beauty. Golden yellow flushed and stippled fiery orange-scarlet.	2.00	15.00
Duc Van Thol Scarlet. (A-8 in.). Brilliant scarlet, largely used for forcing for first early. \$55.00 per 1,000.	.80	6.00
Duc Van Thol White Maximum. (A-8 in.). Pure white popular early forcing variety. \$55.00 per 1,000.	.80	6.00
Duchess de Parma. (C-15 in.). Orange scarlet with yellow edge; very large fine flower. \$85.00 per 1,000.	1.25	9.00
Gold Finch. (B-12 in.). Pure rich yellow. This holds its color to the last; splendid bedder. \$85.00 per 1,000.	1.25	9.00
Golden Queen. (B-12 in.). Pure golden yellow; flower of finest form.	1.50	12.00
Grace Darling. (B-14 in.). A gorgeous big bowl-like flower of brilliant scarlet; base yellow.	1.50	12.00
Ibis. (B-12 in.). New distinct variety. Magnificent flowers of a deep brilliant pink, shaded carmine, good forcer.	1.25	9.00
Joost Von Vondel. (B-12 in.). Deep cherry red, feathered white center. \$70.00 per 1,000.	1.00	7.50
Joost von Vondel White. (Lady Boreel.) (B-12 in.). Purest white, large flower of finest form; the finest white. \$85.00 per 1,000.	1.25	9.00
Kaiser Kroon. (B-15 in.). Crimson scarlet, with broad yellow margin; large and effective bedder. \$110.00 per 1,000.	1.50	12.00
La Reine. (B-12 in.). (See Queen Victoria). \$55.00 per 1,000.	.80	6.00
Max Havelaar. (B-12 in.). An exquisite variety, color blood-orange, flushed salmon-rose.	1.25	9.00
Mon Tresor. (B-12 in.). Rich deep yellow, extra large and finely formed flower; splendid bedded or forced.	1.50	12.00
Ophir D'Or. (B-13 in.). Magnificent bright pure yellow; splendid bedder.	1.50	12.00
Pink Beauty. (B-12 in.). A very large cup-shaped flower of brilliant orange rose and pink with yellow throat; very attractive.	2.00	15.00
Pottebakker, Yellow. (B-12 in.). Excellent forcer and bedder. \$85.00 per 1,000.	1.25	9.00
Pottebakker, White. (B-12 in.). Pure white, large showy flower. \$85.00 per 1,000.	1.25	9.00
Pottebakker, Scarlet. (B-12 in.). Bright scarlet, very large fine flower. \$70.00 per 1,000.	1.00	7.50
Prince of Austria. (C-14 in.). Glittering copper red, large long stemmed flower; very attractive. \$70.00 per 1,000.	1.00	7.50
Princess Helena. (C-12 in.). A splendid pure white large egg-shaped flower, a fine bedder. \$65.00 per 1,000.	1.00	7.00
Princess Wilhelmina. (Queen of Pink.) (B-12 in.). Deep pink with blush on outer petals; long pointed flowers on strong stem.	1.25	9.00
Proserpine. (B-13 in.). Carmine rose, rich, silky and effective beautifully shaped large flowers.	1.50	12.00
Queen Victoria. (La Reine.) (B-12 in.). White, flushed faintly with pink; for bedding and forcing. \$55.00 per 1,000.	.80	6.00
Queen of Violets. (President Lincoln.) (B-12 in.). Large flower of purplish violet.	1.25	9.00
Rose Gris de Lin. (C-10 in.). Delicate rose shaded blush white; fine both for bedding and forcing.	.80	6.00
Thomas Moore. (C-15 in.). Orange, sweet scented. \$70.00 per 1,000.	1.00	7.50
Vermillion Brilliant. (C-10 in.). Dazzling vermilion scarlet, magnificent flower. \$85.00 per 1,000.	1.25	9.00
White Swan. (D-15 in.). Large, pure white flowers. \$55.00 per 1,000.	.80	6.00
Wouwerman. (C-11 in.). Rich claret purple, beautiful and distinct color.	1.50	12.00
Yellow Prince. (B-10 in.). Popular bedder. \$85.00 per 1,000.	1.25	9.00

HENDERSON'S SPECIAL RAINBOW MIXTURE OF ABOVE

This is a very superior mixture made up from Named Sorts with proper proportions of bright colors. All of uniform height and blooming together, extra fine bulbs.

Price, 60c. per doz.; \$4.50 per 100; \$40.00 per 1,000.





HENDERSON'S "PRIZE" COLLECTION OF EXHIBITION HYACINTHS

Hyacinths are among the most popular and satisfactory hardy flower bulbs grown. Their wax-like bell-formed flowers, borne in buxom trusses, are of matchless beauty and also delightfully fragrant. The colors, shades and tints are wonderfully varied, from purest white through blush, pink, rose, etc., to deepest red, and from daintiest porcelain through blue to black purple, from cream through yellows to orange and rosy apricot, etc. Hyacinths succeed with every one and may be had in flower throughout the winter, grown either in pots of soil or glasses of water, while for gardens or bedded on the lawn they are very satisfying and effective.

- Queen of Whites.** Large waxy bells of purest white; tall full truss perfect form.
- Perle Brilliante.** Splendid large spike of big waxy bells; color sparkling lavender with outside tintings of ultramarine blue.

- Marchioness of Lorne.** rosy salmon.
 - City of Haarlem.** The best and largest yellow; splendid well-filled tall spike; good bells of bright buttercup yellow.
 - King of the Belgians.** (Roi des Belges) brilliant blood scarlet; fine, upright spike, splendid bedder.
 - Jacques.** This beautiful hyacinth is known in our trial grounds as "The Big Pink," the spike being very large, tall and well-filled with very large bells of an exquisite shade of warm rose-pink.
 - King of Blues,** dark glossy indigo blue, fine bells, compactly furnishing a tall well-rounded spike.
 - General Vetter.** Large spike of waxy bells of a pleasing blush white.
 - Marie,** dark violet blue large well-formed spike, good bedder.
- | | |
|---|--------|
| Collection "X," 1 bulb each, 9 varieties | \$2.00 |
| Collection "Y," 3 bulbs each, 9 varieties | 5.50 |
- All delivered Transportation Paid in U. S. A.

The proper depth and distance apart to plant bulbs is shown in our booklet, "How to Grow Bulbs," sent free.



Flowering Bulbs—Continued

Grape Hyacinths

These very curious and pretty little Hyacinths are perfectly hardy and of the easiest culture, they thrive and increase in either sunny or partially shaded positions in the garden. When naturalized in little colonies where they can remain undisturbed for several years, the effect—especially of the Grape Hyacinths—is very pretty, while as edgings they are most charming. They are also adapted for winter flowering in the house. (See engraving.)

Blue Grape Hyacinths. 35c. per doz.; \$2.50 per 100; \$22.50 per 1,000.
White Grape Hyacinths. 75c. per doz.; \$5.00 per 100; \$45.00 per 1,000.

"Heavenly Blue" Grape Hyacinths. A new type with larger flowers of richest gentian blue and delightfully fragrant; desirable for cutting and of splendid effect massed in the garden or border. 50c. per doz.; \$3.50 per 100; \$30.00 per 1,000.

Lily of the Valley

(Ready for Delivery in November)

Henderson's Extra Single Crown or "Pips." The finest grade of Crowns in the world for winter flowering. They will bear 12 to 16 large bells on strong stalks, with foliage, even when forced for extra early; the pips average large, plump and regular, with extra long roots. (See engraving.) 25 Crowns (1 bundle) \$2.00; 100 Crowns, \$7.00; \$60.00 per 1,000.

Fortin's Giant. This is the largest variety yet produced; it is only adapted for open ground planting and may not show much superiority the first spring after planting, but by the second season, or when it gets well established, it produces wonderfully luxuriant foliage and immense spikes of purest white bells. Crowns, \$1.00 per doz.; \$7.50 per 100.

Oxalis

Charming little half-trailing or bushy plants particularly adapted for pot culture and hanging baskets, the foliage alone is very attractive and when in flower they are exceedingly pretty.

Bermuda Buttercup. This is one of the finest winter-flowering plants for pot culture, it is a strong luxuriant grower, and the great profusion of bloom produced in uninterrupted abundance for weeks is astonishing. The flowers are of the purest bright buttercup yellow. 5c. each; 50c. per doz.; \$3.50 per 100.

Grand Duchess. A California variety of great beauty; of dwarf sturdy growth throwing large exquisite flowers well above the foliage. Extremely free-flowering from November till June. Price for either, **White, Pink or Lavender.** 5c. each; 50c. per doz.; \$3.50 per 100.

Ranunculus

Among dwarf flowers these are unrivaled for form and attractive colors, ranging through shades of crimson, white, yellow, purple, black, many of them being beautifully marked with other shades. They flower

profusely in pots in the house during the winter or if grown in frames in the spring. Remarkably vigorous growers with immense, and gorgeous, loosely double flowers. **Double Giant French Mixed.** 75c. doz.; \$6.00 per 100.

Scilla (Blue Bells)

Scilla Siberica (Blue). Most beautiful hardy spring bulbs, producing in profusion masses of exquisite rich blue flowers almost before the snow has disappeared. If grown in masses, their flowers fairly carpet the ground; and if grown with Snowdrops and Crocus, for contrast, the effect is magnificent. They should be largely planted as undergrowth in Hyacinth beds, etc. Grown in pots they may be had in bloom from Christmas until April. 75c. per doz.; \$5.00 per 100; \$45.00 per 1,000. (See engraving.)

Siberica Alba. The new white flowering variety, very beautiful. 75c. doz.; \$5.00 per 100; \$45.00 per 1,000.

Campanulata. (Wood Hyacinth or Bluebell.) Flowers borne on tall spikes, 1 to 2 feet high. Each flower measures nearly one inch across and droops gracefully; perfectly hardy; also fine for pot culture. We offer the following colors.

Major Blue. 60c. per doz.; \$4.00 per 100. **Rose.** 75c. per doz.; \$5.00 per 100. **White.** 75c. per doz.; \$5.00 per 100.

Snowdrops

In the early spring months there is nothing more beautiful than a sheet of the snowy, graceful blossoms of the Snowdrop. Beds and effects of surpassing beauty may be arranged with Snowdrops in the centre edged with bright blue Scilla Siberica, or Chionodoxas, or by intermingling them. In beds of Tulips and Hyacinths, Snowdrops are very effective between the lines; they flower while these bulbs are just moving the surface, and when the flowers are over there remains an elegant groundwork of green foliage. Used as a permanent edging, and in masses on the edges of lawns, nesting in the grass, they look charming. Snowdrops are easily flowered in pots during the winter. (See engraving.)

Single Snowdrops. 50c. per doz.; \$4.00 per 100; \$35.00 per 1,000.

Double Snowdrops. 80c. per doz.; \$6.00 per 100; \$55.00 per 1,000.

Elves' Giant Snowdrop. One of the finest of the genus, at least three times the size of the ordinary single Snowdrop; flowers slightly marked with green spots; fine for cutting. 60c. per doz.; \$4.00 per 100; \$35.00 per 1,000.

Winter Aconite (Eranthis Hyemalis)

Early in spring the golden blossoms of the Winter Aconite look charming, resting on an emerald-green cushion of leaves and forming a striking contrast to the Snowdrop, Scillas and Chionodoxa. The foliage remains long after the flowers, making the plant especially valuable in moist situations such as under trees, which the Winter Aconite enjoys and where few other flowering plants will thrive. 3 to 8 inches high. 35c. per doz.; \$2.50 per 100.

Special List of Bulbs for Flowering in Pots and Glasses

	Doz.	100
FREESIAS		
Purity. Produces large sprays of snow white flowers. Extra Size Bulbs	\$0.75	\$5.00
Golden Daffodil (Novelty). The finest yellow variety. Color bright golden yellow.....	1.50	12.00
General Pershing. A beautiful shade of pinkish lavender.....	1.00	7.50
CROCUSES (Selected Bulbs).		
Named Varieties.....	.70	5.00
TULIPS		
Belle Alliance. Scarlet.....	1.00	7.50
Chrysolora. Golden yellow.....	1.25	9.00
Joost Van Vondel. Pure white.....	1.25	9.00
Kaiser Kroon. Red and yellow.....	1.50	12.00
Princess Wilhelmina. Dark pink.....	1.25	9.00

	Doz.	100
DUTCH HYACINTHS (First Size)		
One Bulb suggested for 5-inch pot; 4 for an 8-inch pot or pan.		
Moreno. Finest pink.		
King of the Belgians. Finest red.		
Grand Maitre. Finest blue.		
King of Yellows. Finest yellow.		
La Grandesse. Finest white.		
Prices of above, 25c. each; \$2.50 per doz.; \$18.00 per 100.		
NARCISSUS or DAFFODILS.		
Paper-White. White.....	\$1.00	\$7.50
Emperior. Yellow.....	1.75	14.00
Empress. Yellow and white.....	1.75	14.00
Von Sion. Double yellow.....	1.50	12.00
EARLY WHITE ROMAN HYACINTHS		
Each Per Doz. Per 100		
Extra size bulbs.....	\$0.25	\$2.50 \$18.00

	Each	Per Doz.	Per 100
EARLY PINK ROMAN HYACINTHS			
First size bulbs.....	\$0.15	\$1.50	\$12.00
EARLY LIGHT BLUE ROMAN HYACINTHS			
First size bulbs.....	\$0.20	\$2.00	\$15.00

Hyacinth Glasses

Hyacinths grown in glasses of water are charming ornaments for parlor windows, and the ease and success in flowering bulbs in this way add greatly to their popularity. Furnished in the following colors: green, blue, amber or crystal, 30c. each, \$3.00 per doz. (See illustration.) (Not mailable.)



HENDERSON'S

Modern Peonies

Selected from the Worlds Newest and Best Varieties

Our Method of Selling Henderson's Herbaceous Peonies.—It is the rule among most sellers of Peonies to send out divided roots, that is older plants cut into several 2 to 3 crowned roots. These, of course, can be sold at a lower price, but all Peony purchasers should know that normal flowers of maximum size will not be produced on these divided roots for two or three years. As most of our customers prefer to pay a little more and get older, undivided roots, therefore we are offering roots of 2 and 3 years' growth from the divided stage. These, according to age, will give a great quantity of perfect blooms the succeeding summer if planted between September 1st and November 1st. For cultural instructions send for our Peony Guide post free.

The roots offered in this list are for shipment September 15th to November 15th.

White Varieties

	2 Yrs. Old	3 Yrs. Old
Albatre. Very large, milk white, shaded ivory.....	\$0.75	\$1.25
Baroness Schroeder. Flesh white fading to milk white.....	1.50	2.50
Couronne D'Or. Pure white, ring of yellow stamens around tuft of center petals tipped carmine.....	.75	1.25
Duchess de Nemours. Pure white crown, sulphur white collar, no crimson flecks.....	.75	1.25
Festiva Maxima. Pure white, center prominently flecked crimson.....	.75	1.25
James Kelway. Rose white changing to milk white.....	1.50	2.50
Mme. Crousse. Pure white center flecked crimson.....	1.00	1.50
Mons Dupont. Milk white center splashed crimson showing stamens.....	1.00	1.50

Pink and Rose Varieties

Albert Crousse. Rose white flecked crimson.....	1.50	2.50
Auguste Villaume. Extra large, compact globular rose type. Dark violet rose. Tall grower.....	1.00	1.50

	2 Yrs. Old	3 Yrs. Old
Claire Dubois. Large double globular flowers; color, rich clear satiny pink with glossy reflex.....	\$1.00	\$1.50
Dorchester. Large, compact rose type. Pale hydrangea pink, sulphur white collar, no crimson flecks. Free bloomer. Early.....	1.25	2.00
Eugenie Verdier. Large, medium bright clear pink with silvery reflex.....	1.00	1.50
Mons Jules Elie. Lilac pink shading to deeper rose at base of entire flower, overlaid with sheen of silvery rose.....	1.00	1.50
Solange. Lilac white, deepening salmon toward the center.....	2.50	4.00
Triomphe Du Nord. Large medium compact bomb. Light solferino-red with silvery reflex. Tall free bloomer. Mid-season.....	1.00	1.50
Umbellata Rosea. Large, informal rose type. Guards violet rose shading to amber white center.....	1.00	1.50
Venus. Pale hydrangea pink, collar lighter.....	1.25	2.00

Crimson and Dark Red Varieties

Adolph Rosseau. Purple garnet.....	2.00	3.50
Felix Crousse. Brilliant red.....	1.25	2.00



CRIMSON AND DARK RED VARIETIES—Continued

	2 Yrs. Old	3 Yrs. Old
Grover Cleveland. Very large and full; strong, vigorous grower; dark crimson; late.....	\$1.50	\$2.50
Karl Rosenfield. Brilliant dark crimson. One of the best.....	1.50	2.50
Longfellow. Large flowers of good form, brilliant crimson.....	4.00	6.00
Mons. Martin Cahuzac. Dark purplish garnet.....	4.00	6.00

Peonies to Color

(Without Names)

Double White, Double Red, Double Pink

We offer these in strong divided roots at .50c. each; \$5.00 per doz.

We hold an annual exhibition of Peony Flowers beginning early in June; and we send invitations to our friends in the vicinity of New York. At that time we publish "Henderson's Peony Guide" which we will forward free to all applicants.

HARDY PERENNIAL PLANTS

FOR PERMANENT PLANTING IN OPEN BORDERS, CEMETERY PLOTS, ETC.

We desire to express our appreciation of the liberal share of patronage which we have received from the flower-loving public in years past. We would state that we are now offering only the very finest new and standard sorts that have been thoroughly tested. This will not only be a convenience but a protection to our customers; who may rest assured that they will receive no worthless varieties when ordering from our list.

PLEASE READ CAREFULLY BEFORE ORDERING PLANTS

The plants listed in this catalogue, pages C to H inclusive, will be ready for shipment October 20th.

We will guarantee the safe arrival of all plants sent by Express or Parcel Post to all points in the United States. Should anything be injured in transit we urge our customers to notify us at once on receipt of the goods, and in every case send us a list of what has been damaged so that we can replace them without delay. But when they arrive in good condition our responsibility ceases, and if from inattention or other causes they fail and complaint is then made we cannot replace them.

We do not pay transportation charges on plants. For those of our customers who prefer to receive their plants by Parcel Post we will be pleased to ship that way if money for postage is included with the order, otherwise we will ship by Express, buyer to pay express charge on delivery.

PETER HENDERSON & CO., 35 Cortlandt Street

NEW YORK CITY

General List of Hardy Perennial Plants for Fall Planting

Varieties	Common Name	Height	Color	Time of Bloom
Achillea, "The Pearl"	Yarrow	1½ ft.	White	All Summer
Alyssum Saxatile	Golden Tuft	1 ft.	Yellow	Early Spring
Anchusa Italica	Dropmore Variety	4 ft.	Blue	All Summer
Anemone Japonica Alba	Windflower	2 ft.	White	Fall
Anemone Japonica Rubra	Windflower	2 ft.	Red	Fall
Aquilegia	Columbine	1 ft.	Assorted	Early Summer
Arabis Albida	Rock Cress	6 in.	White	May
Baptisia Australis	Blue False Indigo	3 to 5 ft.	Blue	Early Summer
Boltonia Latisquama	False Chamomile	5 ft.	Pink	All Season
Campanula	Canterbury Bells	2 ft.	Assorted	Early Summer
Coreopsis Lanceolata	Tickseed	1½ ft.	Yellow	All Season
Delphinium Formosum	Blue Larkspur	3 ft.	Blue	All Summer
Dianthus Barbatus	Sweet William	1½ ft.	Assorted	Summer
Digitalis	Foxglove	3 to 5 ft.	Assorted	July and Aug.
Funkia Undulata Media	Variiegated Day Lily	2 ft.	Variegated	Foliage
Gaillardia Grandiflora	Aurora Flower	1½ ft.	Orange	June to Nov.
Gypsophila Paniculata	Baby's Breath	2½ ft.	White	Summer
Helianthus Multiflorus	Double Sunflower	4 ft.	Yellow	All Season
Hemerocallis Flava	Yellow Day Lily	2 ft.	Yellow	Summer
Heuchera Sanguinea	Alum Root	1 ft.	Red	All Summer
Hibiscus (Crimson Eye)	Mallow	4 to 6 ft.	White	Aug. to Oct.
Iberis Sempervirens	Candytuft	1 ft.	White	Spring
Lobelia Cardinalis	Cardinal Flower	3 ft.	Red	Aug. to Oct.
Monarda Didyma	Oswego Tea	1½ ft.	Crimson	Summer
Papaver Orientale	Oriental Poppy	3 ft.	Scarlet	Summer
Phlox Subulata	Moss Pink	6 in.	Pink	Spring
Phlox Sublata Alba	Moss Pink	6 in.	White	Spring
Physostegia Virginica	False Dragon Head	3 ft.	Pink	Summer
Plumbago Larpentae	Blue Leadwort	1 ft.	Purple	All Summer
Pyrethrum Hybridum	Persian Daisy	1½ ft.	Assorted	Summer
Rudbeckia Purpurea	Purple Cone Flower	5 ft.	Red Purple	All Season
Scabiosa Caucasica	Blue Scabiosa	1 ft.	Lilac	All Summer
Sedum Spectabilis	Brilliant Stone Crop	1½ ft.	Ro. Crimson	Fall
Stokesia Cyanea	Stokes Aster	1½ ft.	Blue	All Season
Veronica Subsessilis	Speedwell	2 ft.	Blue	August
Veronica Spicata	Speedwell	3 ft.	Blue	All Summer

Price for any of the above, 35c. each, \$3.50 per doz., \$25.00 per 100; buyer's selection of varieties. Our selection, to be made when the order is being filled, \$2.50 per doz., \$20.00 per 100.

Note.—The heights given include the flower spikes.



A HARDY GARDEN PLANTED BY A CUSTOMER AT WARD ACRES, NEW ROCHELLE, N. Y.

Henderson's Hardy Perennial Plants

Selected for Fall Planting—Continued

ANCHUSA ITALICA, or Alkanet

"Dropmore" Variety. A fine, large, hardy, herbaceous plant; 4 to 5 feet high. This new "Dropmore" variety is a great improvement on the type, the beautiful Forget-Me-Not-like flowers being much larger than others and of a lovely Gentian blue, produced in long, loose sprays. Invaluable for the hardy border, as flowers are produced during the entire season and until late in the fall. Price, 35c. each, \$3.50 per doz.

HARDY ASTER BARR'S PINK

Coming into flower about the middle of September this is one of the showiest late flowering plants and adds a mass of color to the fall garden. The flowers are bright pink with a golden center. Price, 50c. each, \$5.00 per doz.

DELPHINIUM FORMOSUM or Hardy Blue Larkspur

This beautiful hardy larkspur grows about 3½ feet high—bearing in June and July long spikes of showy, velvety, indigo-blue flowers. Make a grand border plant, and the spikes are fine for cutting. Price, 35c. each, \$3.50 per doz.

FUNKIA UNDULATA MEDIA or Variegated Day Lily

The variegated "Plantation Lily." Foliage striped white on green ground. Very useful for borders. Does well in partial shade. Price, 35c. each, \$3.50 per doz.

GAILLARDIA GRANDIFLORA or Blanket Flower

Amongst the ever-blooming hardy plants there is none more showy or ornamental than this. Flowers borne in prodigal profusion from June to frost, useful for cut flowers. They are of gorgeous coloring, dark red-brown in center with bands of crimson-orange and vermilion, meriting the popular title of "Aurora Flower." Height, 2 feet. Price, 35c. each, \$3.50 per doz.

New Early Flowering GYPSOPHILA EHRLEI

Gypsophila Ehrlei surpasses any that has ever been introduced. It is a distinct new form, early, pure white, double-flowering and not a variety of the plentiful Gypsophila paniculata fl. pl. An additional feature of this novelty is that its largest crop of flowers is produced before paniculata begins to bloom. After the main crop has been cut, flower spikes still make their appearance until frost. It is far superior to Gypsophila pan. fl. pl. because of the enormous size of its pure white flowers. Flowers were cut as late as November 15th. Strong field grown, grafted plants. 50c. each, \$5.00 per doz.

PHYSOSTEGIA GRANDIFLORA VIVID

One of the most beautiful of our midsummer flowering perennials—This is a new variety growing from 18 to 24 inches high. The flowers are a bright violet mauve, much larger than the older sorts. Price, 35c. each, \$3.50 per doz.

VINCA or Creeping Myrtle

Well known trailing plants. They are used extensively for covering the ground under shrubs or trees and in cemeteries for covering graves. They will grow where it is too shady for grass or other plants to thrive. Delicate blue flowers. Price, 35c. each, \$3.50 per doz.

POT GROWN PLANTS FOR ROCK GARDENS

We can supply suitable plants for rock gardens, our selection of varieties, at \$3.50 per dozen or \$25.00 per 100. For a garden 6 x 6 feet, 50 plants would be required.

PLANTING MAP—We have prepared a planting map of a Hardy Border as a guide to the planting of Hardy Perennials which we will send free if asked for.

Hardy Phlox

These grand hardy plants are very popular and deservedly so. They are of the easiest culture, and during the late summer and fall months make the garden bright with their wealth of bloom.

Enchantress (Medium). The well-known bright salmon pink with lighter shadings and dark red eye.

Europa (Medium). A pure white with a very decided crimson carmine eye large flowers in good compact trusses very distinct.

Firebrand (Medium). Bright vermilion-scarlet with deeper center, large, strong trusses.

Mrs. Milly Van Hoboken (Medium). Color bright pink with a slight and delicate mauve suffusion strong grower and free flowering. The general color effect at a distance is a fine bright pink.

Mrs. Jenkins (Tall). The best tall early-white for massing.

New Bird (Medium). Deep crimson-red almost vermilion and purple eye. The flower heads are carried well above the foliage in well branched spikes. A very brilliant and excellent variety one of the best of this color.

Painted Lady (Medium). This delicate colored sort is one of the most pleasing in our entire collection. Strong upright growth and large masses of flower heads. Silver pink with salmon shadings and cherry red eye.

Prof. Verchow (Medium). Bright carmine overlaid with brilliant orange-scarlet.

R. P. Struthers (Tall). Bright rosy-carmine, with claret-red eye.

Thor (Medium). A most beautiful and lovely shade of deep salmon-pink suffused and over-laid with a scarlet glow. Price, 35c. each, \$3.50 per doz. Set of 10 for \$3.00.

PHLOX DIVARICATA CANADENSIS

One of our native species which is worthy of extensive planting commencing to bloom early in April and continuing through May, with large fragrant lavender flowers on stems 10 inches high. Price, 35c. each, \$3.50 per doz.

TRITOMA PFITZERII

or Torch Lily

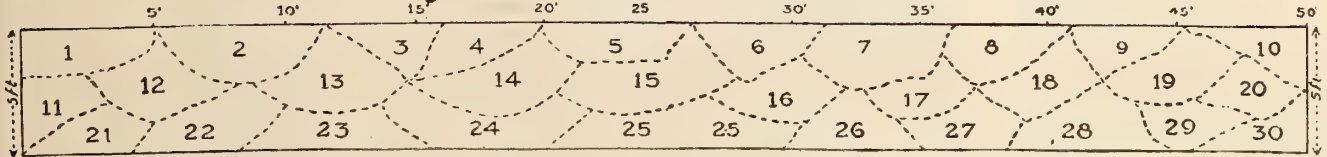
An improved variety of the "Red Hot Poker Plant" or "Torch Lily." It flowers continuously throughout the season. Large spikes of brilliant flame color, rich yellow at base, with long stalks gracefully posed above the rich green foliage. A bed of this in bloom is a grand sight; a border of it around Cannas is admirable. Price, 35c. each, \$3.50 per doz.

YUCCA FILAMENTOSA

or Adams Needle

One of the hardiest and showiest plants we have. The flower spikes are borne in huge panicles above the sword-shaped foliage, which in itself has a sub-tropical effect. The large, white, waxy blooms are drooping in habit and the plant, whether in bloom or not, presents a highly ornamental effect. It can be used to advantage in any situation. Price, 50c. each, \$5.00 per doz.

Hardy Perennial Plants—Continued



PLANTING PLAN OF THE IMPERISHABLE PERENNIAL BORDER

A sketch plan for a typical Hardy Perennial Border is shown at the top of this page. To make one like it 5 x 50 feet would require 100 plants. We list below 30 varieties of contrasting heights and colors and the number of plants for each group. The number after each variety gives the position in which they should be planted.

Plants	No. on Plan	Plants	No. of Plan	Plants	No. of Plan
3 <i>Lobelia cardinalis</i>	1	3 <i>Anemone Japonica</i>	11	4 <i>Alyssum Saxatile</i>	21
4 <i>Digitalis</i>	2	4 <i>Gaillardia grandiflora</i>	12	4 <i>Dianthus</i>	22
2 <i>Anchusa Italica</i>	3	3 <i>Achillea The Pearl</i>	13	4 <i>Funkia variegated</i>	23
2 <i>Boltonia Asteroides</i>	4	3 <i>Pyrethrum</i>	14	3 <i>Heuchera sanguinea</i>	24
3 <i>Rudbeckia purpurea</i>	5	3 <i>Physostegia Virginica</i>	15	4 <i>Plumbago Larpentae</i>	25
3 <i>Hibiscus</i>	6	3 <i>Hemerocallis flava</i>	16	4 <i>Arabis albidia</i>	26
4 <i>Delphinium formosum</i>	7	3 <i>Coreopsis Lanceolata</i>	17	3 <i>Monarda didyma</i>	27
3 <i>Helianthus multiflorus</i>	8	4 <i>Campanula</i>	18	4 <i>Iberis</i>	28
3 <i>Baptisia Australis</i>	9	4 <i>Aquilegia</i>	19	3 <i>Scabiosa</i>	29
3 <i>Gysophylla paniculata</i>	10	3 <i>Papaver</i>	20	4 <i>Phlox Subulata</i>	30

Special Offer. The Imperishable Border Collection, 100 plants, as listed above for \$25.00. Should any of the above varieties be sold out when order is filled we will substitute similar sorts unless instructed to the contrary.

AMPELOPSIS VEITCHII

Sometimes called "Boston Ivy" and "Japan Ivy"

Entirely hardy in the most exposed places, attaining a height of 20 to 30 feet in two or three years, clinging to stones, brick or wood work with the greatest tenacity. It is a great protection to houses as the leaves, lapping over each other like slates on a roof, effectually prevent rain from penetrating the walls. For covering dead trees, boundary walls, etc., it has no equal. Beautiful autumn foliage. Price, strong, one-year pot-grown plants, 35c. each, \$3.50 per doz.

BIGNONIA RADICANS

or Trumpet Creeper

Well adapted for covering walls, arbors, and unsightly places where a showy flowering vine is desired. It is a rapid grower, perfectly hardy and thrive well in exposed places. The flowers are trumpet-shaped and a brilliant orange scarlet. Price, 50c. each, \$5.00 per doz.

CELASTRUS SCANDENS

A rapid growing climber with ornamental light green foliage, yellow flowers in June and bright orange, yellow and crimson fruit in the autumn. It is known by the popular name Bitter Sweet. Price, 50c. each, \$5.00 per doz.

JAPANESE HONEYSUCKLES

Lonicera Halleana. (Hall's Japan Honeysuckle.) Pure white flowers, changing to yellow. Very free blooming and fragrant. Price, 50c. each, \$5.00 per doz.

Lonicera Brachypoda. (Evergreen Sweet-scented Honeysuckle.) Flowers buff, yellow and white.

One of the most vigorous. (See engraving.) Price, 50c. each, \$5.00 per doz.

The Fleecy-White Fragrant Clematis CLEMATIS PANICULATA

Blooms in the early fall and is one mass of fleecy-white fragrant flowers. These are succeeded by the silken seed vessels almost as ornamental as the flowers. It will grow fifteen to twenty feet in a season; it is insect-proof, it is perfectly hardy, it adapts itself to all situations, thrives everywhere, and need only be seen to be admired. (See Engraving.) Price, strong 2-year plants, 50c. each, \$5.00 per doz.



CLEMATIS, JACKMANII

The best-known and most valued variety. Color dark, rich royal purple. Price, \$1.00 each, \$10.00 per doz.

WISTARIA

Ornamental hardy climbers. Their lovely panicles of blue and white flowers produced in wonderful profusion are without a rival.

Wistaria Sinensis White. Flowers in drooping clusters pure white. Price, \$1.00 each.

Wistaria Sinensis, Blue. Flowers in drooping clusters, soft lavender blue. Price, \$1.00 each.

ENGLISH IVY FOR WINDOW BOXES

The English Ivy is used extensively for window boxes and vases during the summer; its value for outdoor window boxes in winter is recognized widely, as the display at the large hotels and fine private residences shows. It is also a good climbing plant for the house. For covering graves in cemeteries it is unsurpassed, being evergreen. Used extensively also as a hardy climber. (See engraving.) Price, plants from 4-inch pots, 2½ ft. and over, 50c. each, \$5.00 per doz.





A selection of the best
**HARDY
 FLOWERING
 SHRUBS**
 for the home grounds



Hardy Flowering Shrubs

These are all 2 to 3 years, transplanted, and range from 1 to 3 ft. in height, according to variety; some being stronger growing, are consequently taller at the same age. In the description of each variety we give the natural heights at maturity, but they can be kept any size desired by pruning. Those marked * may be planted in a shady place.

Althea (Rose of Sharon)

One of the best known ornamental shrubs; easy to grow and valuable for their late blooming. Grows to a height of 10 to 12 ft. and flowers in August and September. We offer Double White and Double Red. Price, 75c. each, \$7.50 per doz.

Berberis Thunbergii

(Japanese Barberry)

Of low, spreading growth, forming a dense impenetrable bush. The branches are set with sharp thorns. Small yellow flowers in the spring followed by bright scarlet berries in the late summer and fall. The foliage turns orange and scarlet in the autumn. A valuable hedge plant, especially interesting because of its graceful drooping habit. Height 4 to 6 ft. Price, 35c. each, \$3.50 per doz., \$25.00 per 100.

Buddleia Magnifica

(Butterfly Shrub)

The long, graceful spikes of flowers are of a pleasing, rich violet rose and are produced in profusion from early June until late Autumn. Price, 75c. each, \$7.50 per doz.

***Calycanthus Floridus**

(Strawberry Shrub)

A strong, upright grower with large, handsome foliage. Peculiar reddish-brown sweet scented flowers in May. It grows to a height of 4 to 6 ft. and will thrive either in sunny or shady places. Price, 75c. each, \$7.50 per doz.

***Forsythia Viridissima**

A spring flowering shrub of easy culture; vigorous growth and free flowering habit. One of the first shrubs to flower in the spring; the deep yellow flowers are produced before the foliage. Height, 10 to 12 ft. Price, 75c. each, \$7.50 per doz.

***Deutzia**

Very ornamental shrubs planted either singly or in a border. The tall varieties may be used for a background and the dwarf for a border. They thrive in any good soil and are profuse bloomers. We offer the following varieties: (See illustration.)

Deutzia Crenata. Flowers pure white tinged rose color. Height 6 to 8 ft. Blooms in June and July. Price 75c. each, \$7.50 per doz.

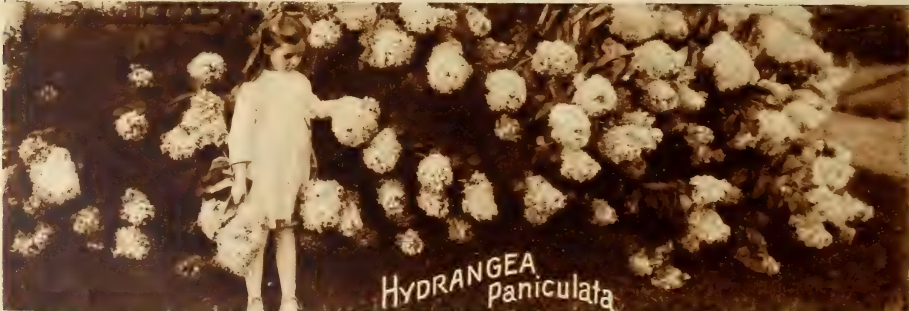
Deutzia Pride of Rochester. Double white flowers in June and July. Height 6 to 7 ft. Price, 75c. each, \$7.50 per doz.

**Hydrangea Arborescens
 Grandiflora**

A variety of *H. arborescens*, recently discovered. The heads of flowers are in shape like *H. hortensis*; they are snowy white. It is a true shrub, begins to bloom in early summer and continues into the fall, so that it is practically ever-blooming. After *H. paniculata grandiflora* has lost its color this variety is still fresh, eventually turning to a light green and then brown. It is a graceful shrub and is destined to achieve the widest popularity. It attains a height of 6 ft. and the same width, and is literally loaded with its grand panicles of large snowy white flowers, one of the grandest sights imaginable. Price, strong two-year-old plants, 2 to 3 ft. high, \$1.00 each, \$10.00 per doz.

**Hydrangea paniculata
 Grandiflora**

This is the most popular hardy shrub in cultivation. It attains a height of 8 to 10 ft.; perfectly hardy in all parts of the country. The flowers are white when first open, but change to pink and russet brown. They are borne in immense pyramidal panicles, nearly a foot in length. It commences flowering in August and continues in bloom the rest of the season, the flowers drying on the bushes. (See illustration.) Price, strong plants, 2 1/4 to 3 ft. high, 75c. each, \$7.50 per doz.



Hydrangea Paniculata Grandiflora makes an ideal dividing line between properties

Our Pamphlet on the Pruning and Care of Hardy Shrubs and California Privet sent free on application.

A Selection of the Best

Hardy Flowering Shrubs—*Shrubs continued*

Lilac

These old-fashioned shrubs are always popular and with the present revival of the "old-fashioned" garden no collection is complete without them. Everyone wants lilacs in May. They add beauty and sweetness to any surroundings with their exquisite plumes of purple and white flowers. (See illustration.)

Lilac Purple. The old-fashioned purple variety. Height, 12 to 14 feet. Price, 75c. each; \$7.50 per doz.

Lilac White. Beautiful pure white flowers. Height, 12 to 14 feet. Price, 75c. each; \$7.50 per doz.

*Philadelphus

Very desirable free-blooming shrubs of erect habit and easiest culture in any common soil. The sweet scented variety Coronarius or Mock Orange is almost as well known as the Lilac. (See illustration.)

Philadelphus Coronarius. (Mock Orange.) Sweet scented, pure white flowers. Height, 8 to 10 feet. Price, 75c. each; \$7.50 per doz.

Philadelphus Lemoinei. An improved variety. White flowers in June. Height 6 to 8 feet. Price, 75c. each; \$7.50 per doz.

Prunus Triloba, Double Flowering Plum

A most ornamental early flowering shrub of vigorous growth. The light pink double flowers are produced in early spring before the leaves develop. Height, 4 to 6 feet. (See illustration on page F.) Price, 75c. each; \$7.50 per doz.

Symphoricarpos Racemosus, (Snowberry)

An old favorite. In July and August it has small pink flowers which are followed by great numbers of large pure white, waxlike berries in clusters that remain until freezing weather. Conspicuous and interesting. Price, 75c. each; \$7.50 per doz.

Spirea

The Spireas will grow in almost any soil but thrive best where the ground is moist and well drained.

Spirea Anthony Waterer. Carmine crimson flowers from June to November. Height, 2 to 3 feet. Price, 75c. each; \$7.50 per doz.

Spirea Prunifolia. (Bridal Wreath.) One of the showiest spring shrubs. In May the branches are covered with small double white flowers. Height, 6 to 8 feet. Price, 75c. each; \$7.50 per doz.

Spirea Thunbergii. Of dwarf bushy habit, rarely exceeding 3 feet in height. White flowers in April and May. Price, 75c. each; \$7.50 per doz.

Spirea Van Houttei. Flowers of pure white, borne in greatest profusion in June. Very showy. Height, 8 to 10 feet. (See illustration.) Price, 75c. each; \$7.50 per doz.



Viburnum Plicatum

(Japan Snowball)

One of the choicest hardy shrubs. A strong growing bush with spreading branches and wrinkled foliage. The snow-white flowers are produced in June and are much larger than the common snowball. Height, 8 to 10 feet. Price, 75c. each; \$7.50 per doz.

*Weigelia

It is safe to say there is no shrub more deservedly popular. All of the varieties are very ornamental and should be found in every collection.

Weigelia Candida. White flowers in great profusion from June to November. Height, 6 to 8 feet. Price, 75c. each; \$7.50 per doz.

Weigelia Eva Rathke. Very distinct. Color deep carmine red. Flowers continuously throughout the month and autumn. Height, 6 to 8 feet. Price, 75c. each; \$7.50 per doz.

Weigelia Rosa. Rich rose colored flowers in June and July. A beautiful shrub. Height, 6 to 8 feet. Price, 75c. each; \$7.50 per doz.

California Privet for Hedges

(See illustration)

The illustration shows a section of a hedge of the famous California Privet. Of all the shrubs which have been tried for hedging, none can compare with this. Of easy growth and splendid foliage, free from insects. Its inexpensiveness alone would give it first place for the purpose. It is now planted by the million annually.

Price, strong shrubs, 1 1/2 to 2 feet high, \$1.00 per doz.; \$6.50 per 100; \$60.00 per 1,000; extra strong, 2 to 3 feet high, \$1.50 per doz.; \$8.50 per 100; \$80.00 per 1,000.

Our Pamphlet on the Pruning and Care of Hardy Shrubs and California Privet sent free on application.



Henderson's Selected Hardy Grape Vines
Caco or Catawba-Concord

A cross between the old favorite Catawba and the well-known Concord. It ripens a little in advance of the Concord. This variety fully equals the Concord in strength and rapidity of growth and is very hardy. The color is a rich, sparkling wine-red, with abundant bloom. Bunch large; berry medium to large and almost round. The crowning merit, however, is its quality, surpassing in tenderness of pulp, luscious flavor and aroma the Catawba, while it is a prolific as the Concord. (See engraving.) Price, 2-year vines, \$1.00 each, \$10.00 per doz.

Campbell's Early

Some points of special merit in Campbell's Early are a very strong, vigorous, hardy vine, with thick, heavy mildew-resisting foliage, and bearing abundant clusters; very large, compact and handsome. Berries large, often an inch or more in diameter; black, with light purple bloom; skin thin, but very tenacious; flesh firm but tender, parting easily from its few and small seeds. Flavor rich, sweet, slightly vinous, free from foxiness. Its season is very early, and its keeping qualities remarkable; having hung upon the vines sound and perfect for six weeks or more after ripening, with no tendency to fall off. Price, 2-year vines, \$1.00 each, \$10.00 per doz.

Green Mountain

(Winchell.) This, the earliest white grape, has been thoroughly tested over a wide area. It combines hardiness, fruitfulness, vigor, good size and excellent quality. Bunch medium to large, shouldered; berries medium, greenish-white; skin thin, tough, pulp tender, sweet, with few seeds; the flavor is excellent. Price, 2-year vines, \$1.00 each, \$10.00 per doz.

Concord

Generally considered the best American Grape. Bunch and berries large; color black with a rich bloom. A strong grower, very hardy, healthy and productive. The variety used exclusively for grape juice and a reliable sort for general cultivation. Price, 2-year vines, \$1.00 each, \$10.00 per doz.

Delaware

An old standard variety. Berries small and compact, skin thin but firm, flesh juicy, very sweet and refreshing. A moderate grower it responds quickly to good culture. Price, 2-year vines, \$1.00 each, \$10.00 per doz.

Niagara

The old favorite white Grape. Bunch large and handsome. Berries medium size, round, skin thin, tough, does not crack and ships well. Sweet with a flavor and aroma peculiarly its own. Ripens with Concord or a little earlier. Price, 2-year vines, \$1.00 each, \$10.00 per doz.

New Blackberry—"Joy" (If wanted by Parcel Post add 10c. per doz.)

An excellent new midseason variety for the home garden. The berries are of large size and superb quality, with a flavor that is rich, sweet and luscious. They are almost as thick as they are long and coal black. The canes are ironclad hardy, of stocky, vigorous habit; so stout and strong that they do not need staking. It is one of the most reliable of all blackberries and never fails to mature a large crop (See engraving.) Price, \$2.00 per doz., \$10.00 per 100.

Blackberries (If wanted by Parcel Post add 10c. per doz.)

- Early Harvest.** Canes of ironclad hardness. Berries of uniform size and glossy black. Very early.
- Eldorado.** The berries are very large, jet black, and ripen well together.
- Mersereau.** A mammoth early, ironclad hardy berry. Exceptionally sweet and melting, being without core.
- Dewberry Lucretia** or Creeping Blackberry, conceded to be the best of its class. Berries firm, sweet and luscious throughout. Very early. Price for the above, \$1.00 per doz., \$6.00 per 100



Raspberries—Black Varieties

(If wanted by Parcel Post add 10c. per doz.)

- Black Diamond.** A berry very popular among western New York growers. One of the strongest growers making an abundance of good, clean wood which ripens up well in the fall, thus enabling it to withstand the cold weather remarkably well. Fruit jet black and juicy with few seeds.
- Cumberland.** In size the fruit is simply enormous, the berries measuring seven-eighths of an inch in diameter, but in spite of this, the fruit is possessed of unusual firmness. Extremely vigorous and remarkably free from disease.

The "Munger." This is a black raspberry and resembles Gregg very much. It is a better flavored berry than Gregg, tougher in texture, and therefore a better shipper. In size it excels Gregg, and is extra fine for the table and preserving. Price for the above Raspberries, \$1.00 per doz.; \$6.00 per 100.

Red Raspberries (If wanted by Parcel Post add 10c. per doz.)

- Cardinal.** This wonderful berry is a surprise in the fulness of its merits, great growth extreme hardiness and wonderful productiveness. It will grow 10 feet high and bear accordingly, producing its choice, rich, red, fruit in marvelous abundance.
- Miller.** An early variety, large fruited and profuse bearer; vigorous grower, with large abundant foliage; color brilliant red; sweet, luscious flavor.
- The King.** The earliest red raspberry grown. Large fruits, firm, beautiful light crimson color; the quality is excellent. Price for the above Raspberries, \$1.00 per doz., \$6.00 per 100.

New Continuous-Fruiting Red Raspberry **St. Regis** (If wanted by Parcel Post add 10c. per doz.)
 Fruits from June to Frost

It is the earliest of all red raspberries; beginning to ripen in New Jersey from June 15th to 20th—just as the strawberry crop is waning. It is wonderfully prolific; the first or main crop being far greater than that of any other red variety known; it succeeds upon all soils, and the canes are absolutely hardy. It fruits on the old canes in generous quantities until late in August. By that date berries begin to ripen upon the young canes, which continue to produce berries in increasing numbers until severe frost. The berries are a bright crimson, of large size and surpassing quality—rich sugary, with full raspberry flavor. They are of exceedingly meaty, firm texture and keep in good condition longer after being gathered, than any other red raspberry. Price, strong transplanted plants, \$1.50 per doz., \$8.00 per 100. The "Garden Culture of Small Fruits" gives practical instructions on planting and culture. Sent free to customers on application.



HENDERSON'S
SUPERIOR

VEGETABLE SEEDS

FOR AUTUMN
SOWING

Selected Varieties Adopted to Southern and Pacific Coast States

WE DELIVER TRANSPORTATION IN THE U. S. AND POSSESSIONS BY PARCEL POST OR EXPRESS AT OUR OPTION ALL THE VEGETABLE SEEDS LISTED

ASPARAGUS ROOTS

The Asparagus plant is slow to die down in the fall, so that the roots cannot safely be dug until about November 1st. By this time the soil is so cool that the plants do not root readily, consequently many are winter killed. For this reason, we advise spring planting for any point north of Washington, D. C. (Ready in November for the South; in March and April for the North.) Our pamphlet "How to Grow Asparagus" sent post free to any address.

THE PALMETTO

Splendid 2-year-old roots, \$2.25 per 100; 500 for \$10.00; \$18.00 per 1,000. (50 roots at 100 rate.)
Three-year-old roots, \$3.50 per 100; 500 for \$16.00; \$30.00 per 1,000. (50 roots at 100 rate.)

GIANT WASHINGTON

Two-year-old roots, \$3.00 per 100; 500 for \$14.00; \$25.00 per 1,000. (50 roots at 100 rate.)
Three-year-old roots, \$4.50 per 100; 500 for \$21.00; \$40.00 per 1,000.
100 2-year old Roots will weigh about 6 lbs.
100 3-year-old Roots will weigh about 20 lbs. If Parcel Post add postage at zone rates on page 3.

BEANS DWARF GREEN

PODDED	Pkt.	Pt.	Qt.	4 Qts.
Bountiful Henderson's	.15	.50	.90	3.50
Black Valentine (a good forcer)	.10	.40	.85	2.50
Henderson's Longfellow	.10	.45	.85	3.00
Refugee, Extra Early	.10	.40	.75	2.50
Valentine, Earliest Red	.10	.45	.85	3.00

BEANS, DWARF WAX or YELLOW

PODDED	Pkt.	Pt.	Qt.	4 Qts.
Improved Black Wax	.10	.45	.85	3.00
Sure Crop	.10	.50	.95	3.25
Unrivalled	.15	.50	.95	3.25
Wardwell's Kidney Wax	.15	.45	.85	3.25

BEET

	Pkt.	Oz.	¼ Lb.	Lb.
Crimson Globe	.10	.20	.60	1.50
Detroit Dark Red	.10	.25	.75	2.00
Blood Turnip, Early	.10	.20	.60	1.50
Eclipse	.10	.20	.60	1.50

BROCCOLI Henderson's Riviera. The Improved Italian Green Sprouting Type. The new vegetable par excellence—succulent and tender. Combining the marrow flavor of the Cauliflower with the nutty tang of the celery. Price, pkt., 25c.; 5 pkts., \$1.00; ½ oz., \$2.25; 1 oz., \$4.00; transportation paid.

BRUSSELS SPROUTS

	Pkt.	Oz.	¼ Lb.
Dalkeith. An excellent selection of this most esteemed vegetable	.15	.50	1.75
Long Island. Special Dwarf, 5 pkts., \$1.00	.25	2.00	

CAULIFLOWER

	Pkt.	Oz.	¼ Lb.
Extra Early Dwarf Erfurt	.20	3.50	12.00
Henderson's Snowball	.25	4.00	14.00

CELERY

	Pkt.	Oz.	¼ Lb.	Lb.
Golden Plume, Henderson's, 5 pkts., \$1.00	.25	3.50	10.00	
Golden Self-Blanching	.20	1.25	4.00	14.00
Easy Blanching, Henderson's	.15	.90	3.25	12.00

CABBAGE FIRST EARLY

	Pkt.	Oz.	¼ Lb.	Lb.
Henderson's				
Early Jersey Wakefield	.10	.75	2.00	6.50
Charleston Wakefield	.10	.75	2.00	6.50
Early Market	.15	.70	2.50	8.00

CABBAGE, SECOND EARLY

	Pkt.	Oz.	¼ Lb.	Lb.
Early Summer, Henderson's	.10	.75	2.00	7.00
Succession, Henderson's	.15	1.00	3.00	10.00

CABBAGE, LATE OR WINTER

	Pkt.	Oz.	¼ Lb.	Lb.
Selected Flat Dutch, Henderson's	.10	.70	1.90	6.00
Holland or Danish Ball-head	.10	.75	2.00	7.00

CABBAGE SAVOY

	Pkt.	Oz.	¼ Lb.	Lb.
American Drumhead	.10	.75	2.00	7.00

CABBAGE CHINESE

	Pkt.	Oz.	¼ Lb.
Pe-Tsai	.10	.50	1.50
Wong Bok	.10	.75	2.00

CARROT

Henderson's New Carrot "Tendersweet." The sweetest, tenderest and hardest Red Carrot grown. The food value of Carrots is so thoroughly appreciated that any improvement is sure to be received with favor by both amateur and professional gardeners. "Tendersweet" is a good reason why the amateur gardener should grow his own vegetables. Price, pkt., 20c.; 3 pkts., 50c.; oz., 90c.; ¼ lb., \$3.00; transportation paid.

	Pkt.	Oz.	¼ Lb.	Lb.
Chantenay	.10	.25	.75	2.00
Danvers, Selected, Henderson's	.10	.25	.75	2.00
Half-Long Red Stump-rooted (Nantes)	.10	.30	1.00	2.50
Long Orange Improved	.10	.20	.50	1.50
Oxheart	.10	.25	.75	2.00

CORN SALAD

	Pkt.	Oz.	¼ Lb.	Lb.
Large-leaved	.10	.15	.45	1.50

CUCUMBER

	Pkt.	Oz.	¼ Lb.	Lb.
The Henderson	.10	.25	.75	1.75
Extra Early Green Prolific	.10	.20	.60	1.50

CUCUMBER, English

Forcing	Pkt.
Telegraph	.30
Everyday	.50
Matchless	.50

KALE

	Pkt.	Oz.	¼ Lb.	Lb.
Siberian	.10	.20	.60	1.50

LETTUCE, HEAD VARIETIES

	Pkt.	Oz.	¼ Lb.	Lb.
Big Boston, Henderson's	.10	.25	.75	2.25
May King. This early butter-head variety produces very compact heads of medium size	.10	.25	.75	2.50
Golden Queen	.15	.35	1.00	3.50
Mignonette, Henderson's. A delicious first early, once tasted, always wanted, good to the heart	.15	.40	1.20	4.00
New York Lettuce	.15	.40	1.20	4.00
Salamander Perfected	.10	.30	.90	2.50

LETTUCE, CURLED OR LOOSE-LEAVED VARIETIES

	Pkt.	Oz.	¼ Lb.	Lb.
Simpson, Early Curled	.10	.25	.75	2.50
Grand Rapids	.10	.25	.75	2.50

LETTUCE COS VARIETY

	Pkt.	Oz.	¼ Lb.	Lb.
Trianon	.10	.35	1.00	3.00

MELONS, English

Forcing	Pkt.
King George	.50
Ringleader	.50
Universal	.50

MUSHROOM SPAWN. Purchaser Pays transportation on Mushroom Spawn. (Our Leaflet on Mushroom Culture Free.)

American Spore Culture. This is sold in flat bricks, 1½ inches thick, weighing from 1 to 1¼ lbs. One brick may be broken into nine pieces which, set 12 inches apart, will spawn an area of 10 square feet. 45c. per brick; 10 bricks, \$3.50; 100 bricks, \$32.50.

ONION, FLAT VARIETIES

	Pkt.	Oz.	¼ Lb.	Lb.
Wethersfield Large Red	.10	.35	1.00	3.50
White Portugal, or Silver Skin	.10	.50	1.50	4.50

ONION, GLOBE-SHAPED VARIETIES

	Pkt.	Oz.	¼ Lb.	Lb.
Southport White	.15	.50	1.50	5.00
Southport Yellow Globe	.10	.30	.90	3.00
South Red Globe	.10	.35	1.00	3.50
Yellow Globe Danvers	.10	.35	1.00	3.50

ONION

	Pkt.	Oz.	¼ Lb.	Lb.
Espanola, Henderson's new Sweet Spanish	.15	.75	2.25	7.00
Prizetaker	.15	.40	1.25	4.00

ONION, PICKLING

	Pkt.	Oz.	¼ Lb.	Lb.
Adriatic Barletta	.10	.40	1.25	4.00
Queen	.10	.40	1.25	4.00

ONION SETS

Onion sets we do not deliver free. Purchaser pays transportation. Onion sets weigh 1 lb. per qt.

	Qt.	4 Qts.	Peck
Top or Button	.30	.85	1.40

PARSLEY

	Pkt.	Oz.	¼ Lb.	Lb.
Champion Moss Curled	.10	.15	.45	1.50
Extra Double Curled	.10	.15	.45	1.50
Hamburg Turnip Rooted	.10	.15	.45	1.50

PEAS, EARLY

	Pkt.	Pt.	Qt.	4 Qts.	Pk.
Alaska	.10	.40	.75	2.50	4.75
Laxtonian	.15	.45	.85	3.00	5.50
First of All	.10	.40	.75	2.50	4.75
Nott's Excelsior	.10	.40	.75	2.50	4.75
Little Marvel	.15	.45	.85	3.00	5.50

PEAS, SECOND EARLY AND MEDIUM

	Pkt.	Pt.	Qt.	4 Qts.	Pk.
Advancer	.10	.40	.75	2.50	4.75
Horsford's Market Garden	.10	.40	.75	2.50	4.75

PEAS, MAIN CROP AND LATE

	Pkt.	Pt.	Qt.	4 Qts.	Pk.
Everbearing	.10	.40	.75	2.50	4.75
Junco	.15	.40	.75	2.50	4.75

HENDERSON'S
SUPERIOR

VEGETABLE SEEDS

FOR AUTUMN
SOWING

Continued

RADISH, ROUND VARIETIES

	Pkt.	Oz.	¼ Lb.	Lb.
Early Scarlet Turnip	.10	.20	.50	1.25
Early Scarlet Turnip, White Tipped	.10	.20	.50	1.25
Early Round Dark Red	.10	.20	.50	1.25
Early Scarlet Globe	.10	.25	.60	1.50
Rapid Forcing	.10	.25	.60	1.50
Red Forcing	.10	.25	.60	1.50
Early Giant Crimson Turnip	.10	.25	.75	1.75

RADISH, OLIVE-SHAPED VARIETIES

	Pkt.	Oz.	¼ Lb.	Lb.
French Breakfast	.10	.20	.50	1.50
Red Rocket	.10	.25	.60	1.75
White Tipper Rocket	.10	.25	.60	1.75

RADISH, LONG VARIETIES

	Pkt.	Oz.	¼ Lb.	Lb.
Giant White Stuttgart	.10	.20	.60	1.50
Long Scarlet, Short Top	.10	.20	.50	1.25
Long White Vienna (Lady Finger)	.10	.20	.60	1.50
White Strasburg	.10	.20	.60	1.50

RADISH, WINTER VARIETIES

	Pkt.	Oz.	¼ Lb.	Lb.
Long Black Spanish	.10	.20	.60	1.50
Rose China, Winter	.10	.20	.60	1.50

SPINACH FOR WINTER

(Varieties prefixed * may be sown in the fall in latitude of New York for spring crop.)

	Pkt.	Oz.	¼ Lb.	Lb.
*Hardy Winter, Henderson's	.10	.15	.25	.60
Long Season, Henderson's	.10	.20	.30	.75
New Long Standing Savoy	.10	.25	.65	1.50
Norfolk Savoy-Leaved	.10	.15	.25	.60
*Thick-Leaved, Henderson's	.10	.15	.25	.60
*Victoria	.10	.15	.25	.60
*Viroflay, large round-leaved	.10	.15	.25	.60

TOMATO

	Pkt.	Oz.	¼ Lb.	Lb.
Cooper's Special, a very attractive variety. The flesh is solid and the seed cavities have scarcely any core.	3 pkts.	.60	.25	1.00
Livingston's Globe	.10	.60	1.75	6.00
Ponderosa	.10	.90	3.00	

TOMATO FOR FORCING

	Pkt.	Oz.	¼ Lb.	Lb.
Sterling Castle	.20	1.00		
Sunrise	.20	1.00		
Bonny Best	.10	.50	1.75	6.00
TURNIP	Pkt.	Oz.	¼ Lb.	Lb.
Early White Milan	.10	.20	.60	1.75
Early Flat Dutch	.10	.15	.35	1.00
Extra Early Milan Purple Top	.10	.20	.60	1.75
Purple Top White Globe	.10	.15	.35	1.00
Red Top Strap Leaf	.10	.15	.35	1.00
White Egg	.10	.15	.45	1.25
White Strap Leaf	.10	.15	.35	1.00
Yellow Globe	.10	.15	.35	1.00

HENDERSON'S GIANT PANSY SEEDS FOR SOWING THIS FALL

GROWING PANSIES FROM AUTUMN-SOWN SEED. Sow the seed in July, August or the early part of September in the open ground on a finely prepared seedbed sheltered from hot sun, or protect with a light covering of hay or straw or even burlap, to keep the ground moist until the seedlings are up. Thin the seedlings to 3 or 4 inches apart—in about 6 weeks the young plants can be removed to their permanent flowering quarters, where they must be again covered with hay to a depth of about 3 inches after freezing weather sets in. Another way to winter over autumn-grown seedlings is to transplant them 3 to 4 inches apart according to their size into coldframes, and transplant to flowering quarters as early in the spring as possible. The Pansy is hardy with slight protection, and thrives best when grown cool. In hot exposed situations it deteriorates rapidly.

Henderson's Mammoth Butterfly

This "Butterfly" race originated from selections made by the late Peter Henderson—who was particularly fond of pansies—from the best American, English, Scotch, French and German varieties. This process of selection has been followed in by us ever since, and from the legion of "most beautiful" pansies among Henderson's Butterflies we have chosen this offering.

3120 Henderson's Mammoth Butterfly Pansies in Mixed Colors. Per 1,000 seeds, \$1.00; Pkt. 25c.

Popular Strains

- 3100 Bedding.** Finest Mixed. Per 1,000 seeds, 50c.; Pkt. 10c.
- 3110 Bugnot's Large Stained French.** Mixed. Per 1,000 seeds, 75c.; Pkt. 15c.
- 3140 English Choicest Show.** Mixed. Per 1,000 seeds, \$1.00; Pkt. 25c.

Henderson's Giant Mottled

Well-grown they measure 3 to 3½ inches across—and of most gorgeous effects, blotches, spotted, marbled, veined, striped and blended, colors passing through reds, rose, pink, white, purple, in beautiful and indescribable variegation.

3150 Mixed Colors. Per 1,000 seeds, \$1.00; Pkt. 25c.

Henderson's Mammoth Parisian

The Parisian Pansies are distinguished by their varied colors and strong markings. There is a large "blotch" on each of the five petals, with a band of some strikingly contrasting color, over all of which is thrown a cobweb-like netting of yet another hue.

3160 Mixed Colors. Per 1,000 seeds, \$1.00; Pkt. 25c.

Henderson's Giant Ruffled

A remarkable strain of Giant Pansies, the flowers of which are so large and full that the broad petals seem to be "gathered" to the stem, causing them to be fluted from center to circumference, not unlike "frilled" velvet. The unusual substance of the flowers, enables them to present bold, open and handsome faces, during windy or dry summer weather, when other Pansy flowers droop or wilt. The flowers are borne on strong stems well above the foliage and contain rich combinations of coloring not found in other Pansies.

3170 Mixed Colors. Per 1,000 seeds, \$1.00; Pkt. 25c.

Pansy Roggli's Giant

3172 A new race that was developed in Switzerland and is distinguished for its extremely strong growth. It produces giant flowers of the most beautiful colors and begins blooming very early.

Owing to all these outstanding qualities, this sort should be included in every garden. **Mixed colors.**

3173 Roggli. Cardinal shades. A selection of many crimson sorts. Per 1,000 seeds, \$2.00; Pkt. 50c.

World Record Early-Flowering Hardy

The flowers are of large size and are delicately fragrant—indicating the Violet strain in their make-up.

- 3252 Celestial Queen.** Bright sky-blue, tinted lavender, small yellow eye. Pkt. 15c.
- 3254 Ice King.** Silver white with deep blue blotch on lower petals. Pkt. 15c.
- 3256 March Beauty.** Rich velvety violet-purple, with yellow eye. Pkt. 15c.
- 3258 Winter Sun.** Golden-yellow with maroon blotch on lower petals. Pkt. 15c.
- 3260 Mixed Colors.** Pkt. 15c.

3261 Collection World Record Pansies. One pkt. each of above 4 varieties. 50c.

Henderson's Superior Giant Trimardeau

Years of scientific hybridization and selection in raising Pansies have gradually evolved a superior race of robust growth. The flowers have also correspondingly improved in size, substance, form and colors. Per 1,000 Pkt.

- 3176 Aurora.** Crimson purple shading to light wine, with a defined white margin. seeds 60c. 10c.
- 3178 Bridesmaid.** White shaded rose beautifully blotched. 60c. 10c.
- 3182 Canary Bird.** Pure spotless yellow. 60c. 10c.
- 3186 Indigo-Blue.** Blotched black. 60c. 10c.
- 3192 King of the Blacks.** Lustrous jet-black. 60c. 10c.
- 3196 Lord Beaconsfield.** Lavender and heliotrope. 60c. 10c.
- 3207 Meteor.** Rich, reddish-brown or mahogany. 60c. 10c.
- 3214 Peacock. (Gloriosa.)** Garnet, cream and blue. 60c. 10c.
- 3216 President Carnot.** White with large violet blotches. 60c. 10c.
- 3217 Prince Charming.** Rosy red, veined purplish lilac. 60c. 10c.
- 3218 Purple. (Atropurpurea.)** Velvety royal-purple. 60c. 10c.
- 3222 Snow Queen.** Spotless snow-white. 60c. 10c.
- 3226 Striped.** White, blue, violet and chocolate. 60c. 10c.
- 3227 Victoria.** A very distinct variety; clear oxblood. 60c. 10c.
- 3234 White Treasure.** White with three violet blotches. 60c. 10c.
- 3238 Giant Yellow.** Golden with mahogany eye. 60c. 10c.
- 3240 Mixed Colors.** Per Oz., \$4.00. 50c. 10c.

3241 Henderson's Collection of 12 Giant Pansies. This Collection contains one packet each of 12 of the largest and most beautiful Pansies in cultivation. Price, \$1.00

Autumn Is the Best Time to Make a Lawn



A LAWN at WARD ACRES, New Rochelle, N.Y.
MADE WITH THE
HENDERSON LAWN GRASS SEED.

The "HENDERSON" Lawn Grass Seed

Sown in the Autumn, produces Enduring Turf which will withstand Summer Droughts

For a long time we have urged the Fall planting of grass seed, for either the new lawn, or the renovation of the present one, and year after year, the results have shown the wisdom of following the natural way.

Grass seed planted in the Fall, germinates rapidly, and will attain a strong growth by the time frost comes. Even with the rigorous Northern winters there is very little danger of its being injured by the cold weather; in fact, our advice is not to protect it in any way.

Even before the frost is completely out of the ground, we find that the young grass responds to the first warm days. Weed seeds from the previous Summer will not start until weeks after the Fall-sown grass has become strong and vigorous enough to withstand their more rapid growth; in fact, if it has been planted thickly, the grass will often crowd out the weeds.

Any lawn will be improved by a light sowing of the appropriate Henderson mixture during early September, together with an application of one of the Henderson fertilizers. You will find a list of our various grass mixtures for particular places on Page 44 and whether you are going to make a new lawn, or renovate the old, we strongly urge your doing so at once.

A copy of our pamphlet "How to Make a Lawn" is sent with every package of the Henderson Lawn Grass Seed.

In the latitude of New York, the seed may be sown up to the first of October, farther south later, and farther north up to about September first.

Price of the "Henderson" Lawn Grass Seed (Delivered Transportation Paid)

50c. per qt. 90c. for 2 qts. \$1.65 for 4 qts. \$3.00 per peck of 5 lbs. \$5.50 per 1/2 bushel of 10 lbs. \$10.00 per bushel of 20 lbs. 100 lb. lots and over \$45.00 per 100 lbs.

We also deliver in the U. S. by express or freight, our choice, all Lawn Grass Seeds in larger quantities

Unsolicited Words of Praise for The "HENDERSON" Lawn Grass Seed

Sixteen years ago I sent to your company for Lawn Seed from Spokane, Wash. and we have had wonderful success with our venture.

Mrs. Roy W. Hill,
Wenatchee, Wn.

Lawn Grass Seed mixture gotten from you last August sowed early part of October and got a fine growth of grass which came through the winter finely.

Loren E. Guss,
Spring City, Pa.

Everyone always admires our lawn the grass is so fine and green.

Gladys C. Julien,
Grenada, California

You may be interested to know that the peck of Lawn Grass Seed recently purchased was planted May 11. up May 21st and was mowed this evening (June 4, 1929), a little over three weeks.

Mr. John J. Harvey,
Troy, N. Y.

I have been buying seeds and plants from you a number of years and have found everything to be all right in every way. I live within 50 feet of the railroad station and have many compliments on my lawn, the seeds ordered from you. Passengers on the trains would call me to get the address of my grass seeds.

Miss Sallie V. Abernethy,
Connelley Springs, N. C.

AMOUNT OF SEED REQUIRED FOR LAWNS

Measurement	Quantity
10 x 20 Ft.	1 qt.
20 x 20 Ft.	2 qts.
20 x 40 Ft.	4 qts.
30 x 50 Ft.	1 peck
50 x 60 Ft.	1/2 bushel
60 x 100 Ft.	1 bushel
100 x 120 Ft.	2 bushels
110 x 400 Ft.	5 to 6 bushels

For Henderson's Lawn Enricher
see page N

The Most Beautiful Lawns In America

are made with

Henderson's Special Mixtures of Lawn Grass Seed

We deliver all Lawn Grass Seeds transportation paid anywhere in the U. S. A. by freight, express, or parcel post.

EVERY LAWN A PUTTING GREEN

"Special Bent Formula"

On account of the growing popularity of golf in recent years, the question has many times been put to us by our customers, "Why can't I have a lawn that looks like a Putting Green." Our answer to this: was to make up a combination of the finest re-cleaned grasses, using as a basis for this mixture the Bent Grasses which are largely used in the finer Putting Greens of today.

A lawn seeded with this mixture and properly cared for will in truth make every lawn a Putting Green.

It is imperative in maintaining a lawn of this type, that the grass should be kept cut short and well rolled all through the season. Starvation of the grass plants is the most frequent cause of unsatisfactory lawns, and grass needs constant small applications of fertilizer and plenty of water to maintain a perfect lawn.

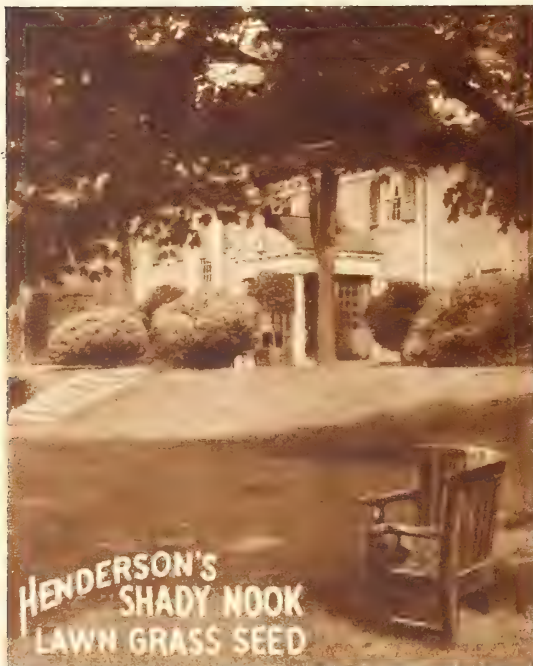
Also, every spring apply a dressing of Henderson's Lawn Enricher. Broadcast this, using five pounds for each 200 square feet, and water it in thoroughly with a hose. (See illustration.)

We advise seeding at the rate of one pound to cover a space of 10x30 or 300 square feet. Price, transportation paid in the U. S., \$1.25 per lb.; 5 lbs. \$5.50; 25 lbs. \$25.00; 100 lbs. lots and upward, \$90.00 per 100 lbs.

Shady Nook

On nearly all lawns there are unsightly bare spots under the shade of trees, which have baffled all efforts to get into Grass, but with this mixture there need be no further difficulty. It is a combination of fine, dwarf growing, evergreen varieties, which in their wild or natural state are to be found growing in the woods or other sheltered and shaded spots. Ground that has been densely shaded by trees is frequently "sour," and if the drainage is defective it is apt to be covered with moss and coarse Grasses. In such cases an application of slaked lime, at the rate of one hundred pounds to each thousand square feet, or two tons to the acre, is an excellent corrective and sweetener, but the moss should be first raked off. (See illustration.)

Price, transportation paid in the U. S., 60c. qt.; \$2.00 for 4 qts.; \$3.50 pk.; \$6.50 per ½ bu. of 10 lbs.; \$12.00 bu. of 20 lbs.; \$55.00 per 100 lbs.



Sunny South

It is especially prepared for the South, and contains all the best Grasses that are by nature adapted for hot, dry situations. In the South, Bermuda Grass is frequently used, but it remains green only in the summer months, turning brown in winter; but by using this mixture, and with some care and attention to watering, an all-the-year-round lawn can be maintained in South States where Grasses do not usually thrive.

Price, transportation paid in the U. S., 60c. qt.; \$2.00 for 4 qts.; \$3.50 pk.; \$6.50 per ½ bu. of 10 lbs.; \$12.00 bu. of 20 lbs.; \$55.00 per 100 lbs.

Terrace Sod

A special mixture of Grasses best suited for sowing on terraces, embankments and hillsides; Grasses that produce long, strong, spreading roots, thus preventing heavy rains from washing them out; that will withstanding drought and exposure, thrive on shallow soils, and at the same time produce a rich, velvety-green turf throughout the season. There need be no fear of introducing coarse Grasses into your lawn by sowing this mixture, for, though strong-rooted, the Grasses are equally as fine-leaved as those used in the "Henderson Lawn Grass" mixture.

Price, transportation paid in the U. S., 60c. qt.; \$2.00 for 4 qts.; \$3.50 pk.; \$6.50 per ½ bu. of 10 lbs.; \$12.00 bu. of 20 lbs.; \$55.00 per 100 lbs.

Seaside

Along our seacoast there are many beautiful summer homes and resorts with such sandy saline surroundings that a turf of the favorite lawn Grasses cannot be produced. We have so often made up a mixture of special Grasses to thrive under these trying conditions that we have concluded to offer it for the benefit of others who may be having the same "trouble in getting Grass to grow." Our "Seaside" mixture will make a good turf of green on sand where the finer Grasses are not so likely to thrive, though, of course, the sand must be top-dressed with not less than 2 inches of soil before even our "Seaside" Grass Seed is sown, to enable the young Grass to get a start, after which the long roots—peculiar to the varieties we use in this mixture—drive down deeply in the sand and remain permanently self-sustaining, if attention is given to sprinkling during dry weather.

Price, transportation paid in the U. S., 50c. qt.; \$1.65 for 4 qts.; \$3.00 pk.; \$5.50 per ½ bu. of 10 lbs.; \$10.00 bu. of 20 lbs.; \$45.00 per 100 lbs.

HENDERSON'S BANNER SPRAYER

None Better for the Medium Sized Garden or Small Orchard

For spraying vegetable crops, flowers, trees, bushes, shrubs, etc., also for spraying whitewash disinfectants and oils in chicken coops, barns, stables, etc. It sprays anything in liquid form, and can also be used as a fire extinguisher.

The tank is well made of heavy solid brass, or heavy galvanized steel, double seamed and well riveted, to stand heavy pressure. Tank has double bottom to withstand heavy knocks against stones or on concrete floors.

Pump, heavy seamless brass with cast brass pump head. Pump screws into center of tank and a few strokes of the pump charge the tank with compressed air, and by releasing the lever control spray pours forth in a fine broad mist, or long distance spray according to the adjustment of nozzle. Each pump is equipped with shoulder strap adjustment with snap ends for quickly removing.

Hose, 2-ft. of 1/2 inch best grade, with coil spring to prevent breaking when not in use, and in addition a brass rod 2-ft. long with angle neck to allow easy spraying underneath leaves.

Nozzle, automatic, non-clog. Capacity about 3 1/2 gallons.

Henderson's Banner Sprayer, Brass tank..... \$9.50
 Henderson's Banner Sprayer, Galvanized tank. 6.50
 Two-row attachment for spraying 2 rows at one passing..... 1.60
 Brass Extension Pipes, 2 foot lengths, each..... .70
 Brass Elbow for spraying under leaves..... .40

Price



Brass Strainer for straining solution.

Above prices transportation paid.

Compressed Air Atomizer and Sprayer

The most perfect small hand compressed air sprayer made. Delivers a **continuous** fog-like spray. Is fitted with straight and adjustable nozzles, making a perfect underleaf sprayer. In fact, spray can be delivered at **any angle** or position desired. Made in solid sheet copper, highly polished; holds one quart. (See engraving.)

Price, \$2.25. Transportation paid



Solid sheet copper.

Perfect Rubbish Burner

Every portion of this Burner is welded together by electricity. It is especially adapted for burning leaves and litter from lawns and gardens, also for Parks, Department Stores, School Houses, Public Buildings, and City Streets. The Burner is made of heavy material and will give long service. It is made of 1 1/2 by No. 14 gauge steel; the bottom and lid are of No. 12 galvanized wire.



Prices, small size, 15 x 24 in., \$9.00; large size, 20 x 35 in., \$15.00.

Not available. F.O.B. N. Y.

Henderson Rubbish Burner

Also Valuable for Storage of Apples, Potatoes, Roots, Etc.

Manufactured of heavy galvanized wire, strong and durable, welded at all joints, suitable for disposal of waste paper and all kinds of rubbish.



No. 2. 24-in. high, 18-in. diameter top, 14 1/2-in. diameter bottom. Price, \$2.50.

No. 3. 28-in. high, 20-in. diameter top, 16 1/2-in. diameter bottom. Price, \$3.50.

Not available. F.O.B. N. Y.

Cedar Tree Tubs

The cut illustrates our regular style tree tubs —this being our first or original type. These tubs are made of seasoned selected Virginia White Cedar, have heavy castings and are trimmed with extra heavy flat steel hoops. These tubs are painted both inside and out with best oil paints, and the hoops and castings are trimmed in a jet black paint. On this style we use a removable bottom. Substantially made, handsome and attractive, and every tub guaranteed.

Inside Measurements. Prices, F.O.B., N. Y.



Size	Top Diameter Inches	Bottom Diameter Inches	Depth Inches	Hoops Inches	Price Each	Weight Lbs.
No. 0	24 3/8	22 3/4	24	32 1/2	\$12.50	56
No. 1	23 3/8	20 1/4	22	31 1/2	11.10	34
No. 2	21	18 1/8	20	31 1/2	9.90	37
No. 3	18 3/8	17 1/8	18	31 1/2	8.05	28
No. 4	16 1/2	14 3/8	16	31 1/4	6.50	24
No. 5	14 1/2	13 3/8	14	31	5.85	17
No. 6	12 1/2	10 1/2	12	31	4.65	14
No. 7	11 3/4	9 3/8	10	3 3/4	4.10	10
No. 8	10 3/8	9 3/8	9 1/2	3 3/4	3.55	9

Henderson's Perfecto Window Box

Henderson's Perfecto window boxes for Flowers are recognized by scientific gardeners and florists as the correct idea in construction for growing house plants and porch plants. **The problem is solved by means of the patented self irrigating and air circulating system.** Water can be poured in either end of box and quickly seeks the level of the connecting troughs and rises into the earth to the root of the plants where you want it.

The drainage plug in the end is removable, to be taken out only when the box is in the open and during heavy rainfall.

The material used in construction is copper-steel, with a lead coat, which will neither rust nor deteriorate like plain galvanized iron and is the best material procurable for a long-life flower box to be continually under moisture. It is light in weight. (See illustration.)

FINISH

The **Perfecto** is an ornament in good taste for any home and is constructed with this purpose in view. The finish is enamel, in **green**. Each box shipped or delivered is packed in an individual carton to insure preservation of finish and safe delivery to purchaser.

No. 1. 20 inches long, 6 inches deep, 7 inches wide..... \$1.75
 No. 2. 26 inches long, 6 inches deep, 7 inches wide..... 2.25
 No. 3. 32 inches long, 6 inches deep, 7 inches wide..... 2.75
 No. 1. 38 inches long, 6 inches deep, 7 inches wide..... 4.00

Transportation paid.

Rubber Plant Sprinklers

For sprinkling cut flowers, seedlings, clothes, etc. A pressure on the bulb ejects the water in a fine spray.

Prices, straight neck, 8 oz. size, \$1.25; 10 oz. size, \$1.50.

Angle neck, 8 oz. size, \$1.25; 10 oz. size, \$1.50. Transportation paid

Hot Bed and Mushroom Bed Thermometer

Brass-tipped point encloses the temperature bulb; it is simply thrust into the soil or bed. Best grade.

Transportation paid, \$3.00.



Angle and Straight Neck Rubber Sprinklers

Cortlandt Tubs

For Specimen Plants and Trees

These Tubs are made of Specially Selected Seasoned Cypress.

Painted Green inside and out with best Oil Paint. Smooth, rounded, beveled Top Rims.

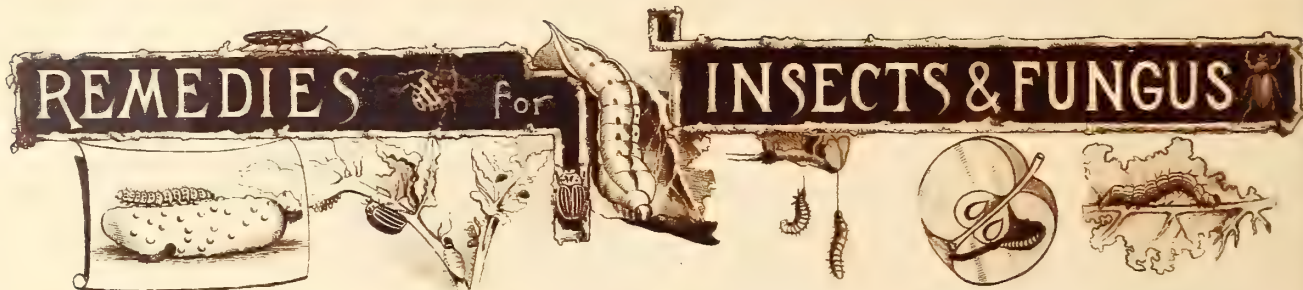
Electric welded wire hoops, stapled and clinched. Neat, strong and serviceable.

Pack Wt.	No.	Top Deep	Each
3 lbs.	A1	11 x 10	\$1.40
5 lbs.	B2	12 x 11	1.60
6 lbs.	C3	14 x 13	2.50
8 lbs.	D4	15 x 14	3.00

F.O.B. New York.



The Cortlandt Tub



Insects that Suck the Juices from Plants, Foliage, etc., such as lice, green, black and white aphid or fly, mealy bug, red spider and scale, thrust their proboscis into the leaf or stem, and are not affected by stomach poisons; so they must be destroyed by contact insecticides. Those in powder form kill by the breathing pores in the insect's skin; or in liquid form, by being absorbed through their pores. The best contact insecticides in powder form are Bug Death, Hellebore, Slug Shot and Tobacco Dust. The best fluids are Alphine, Black Leaf 40, Evergreen, Fish Oil Soap, Kerosene Miscible Oil, etc.

Insects that Eat Plants, Foliage, Vegetables, Fruits, Flowers, etc., whether bugs, beetles, worms, caterpillars or slugs, are more quickly and effectually destroyed with a poisonous stomachic insecticide such as Arsenate of Lead, or Hellebore. These, if applied according to directions, are so diluted as to be harmless to vegetation and to animal life. Less poisonous stomachic and contact insecticides are Bug Death, Kerosene Miscible Oil, Slug Shot, Evergreen, etc.

NOTICE.—Customer pays transportation. Poisons and liquids not mailable. Allow postage on mailable insecticides.

Ant Killer. A very effective and much needed product for use on lawns, sports turf, golf courses, etc., Not mailable. Can be shipped by express only.

Price, 50c. each tin; \$5.50 per dozen. F.O.B. N. Y.

Alphine. Very powerful, soluble in water, applied as a spray, wash or dipping solution. It kills aphid, thrip, red spider, slugs, ants, mealy bug, scale. Price, 1 gill, 25c.; ½ pint, 40c.; 1 pt., 65c.; qt., \$1.00; gal., \$3.00. Not mailable. F.O.B. N. Y.

Arsenate of Lead Powder. For dusting mixed with Hydrated Lime or road dust or in liquid form. To kill most chewing insects on Plants, Trees, Shrubs, etc. Is far superior to Arsenate of Lead Paste, which contains a large percentage of moisture leaving a small amount of active ingredients that deteriorate rapidly.

Price, 1 lb., 50c.; 5 lbs., \$2.00; 10 lbs., \$3.50; 25 lbs., \$8.00; 100 lbs., \$24.00. Not mailable. F.O.B. N. Y.

Black-Leaf 40. One of the best-known and most widely-used products for the effective and economical control of sucking insects. For Delousing poultry—"paint" Black Leaf 40 on top of roosts shortly before roosting time. It "works while they roost."

Price, 1 oz. bottle, 35c.; ½ lb. tin, \$1.25; 2 lb. tin, \$3.25; 10 lb. can, \$11.85. Not mailable. F.O.B. N. Y.

Bordo and Arsenate of Lead Powder. A combined insecticide and fungicide, kills bugs and prevents many diseases such as Mildew, Blight, Rot and Fungus. Can be used as a wet or dry spray. We advocate the use of Bordo and Arsenate of Lead Powder in preference to paste form as it mixes more readily and holds its strength better and more convenient to handle.

Price, 1 lb., 50c.; 5 lbs., \$2.00; 10 lbs., \$3.50; 25 lbs., \$8.00; 100 lbs., \$24.00. Not mailable. F.O.B. N. Y.

Bordeaux Mixture, Powdered. For blight, mildew, rust, etc. It has all the advantages of paste, with double the strength. Goes twice as far. Used for dry dusting or spraying. Dilute 1 pound to about 6 gallons of water for 3-3-50 formula. Price, 1 lb., 40c.; 5 lbs., \$1.50; 10 lbs., \$2.75; 25 lbs., \$5.75; 100 lbs., \$18.00. Not mailable. F.O.B. N. Y.

Calcium Arsenate Powder. Used for spraying potatoes, cotton, tobacco, against chewing and leaf-eating insects; kills quick. Sticks to leaves, mixes easily with water and can be used either wet or dry; can be combined with Lime Sulphur or Bordeaux Mixture. One pound makes about 40 to 50 gallons. Price, 1 lb., 35c.; 5 lbs., \$1.50; 10 lbs., \$2.50. Not mailable. F.O.B. N. Y.

Copper Solution, Ammoniated. A fungicide for spraying when fruits are nearing maturity, or plants in bloom. One quart is sufficient for 25 gallons of spray. Price, 1 qt., \$1.25; 1 gal., \$4.00. Not mailable. F.O.B. N. Y.

Evergreen (Non-Poisonous)—Will not injure or discolor the most tender plant; HARMLESS to man, birds or animals, yet deadly to sucking and chewing insects, such as Aphid, Thrip, Rose Bug, Red Spider and Bean Beetles. One ounce makes up to six gallons of spray. Price (postpaid): 1-oz. bottle, 45c.; 6-oz. bottle, \$1.15. By express at purchaser's expense: 16-oz. bottle, \$2.00; 1 gallon, \$13.00; 5 gal., \$50.00.

Fish Oil Soap. (Whale Oil Soap.) A wash for insects and eggs on the bark, and for smearing the trunks of trees to prevent worms from crawling up. Price, 35c. per lb.; 5 lbs., \$1.60; 10 lbs., \$3.00. For packed weight add one pound. F.O.B. N. Y.

Lime Sulphur Solution. For scale insects on trees and such fungus bark diseases as can be treated in winter. Dilute and spray with a spray pump while trees are dormant, in fall, winter or spring. Price, qt. can, 50c.; gal., \$1.25; 5 gal. can, \$4.00; barrel of 50 gallons, \$15.00. Not mailable. F.O.B. N. Y.

Lime Sulphur (Powdered). For dormant spraying of fruit and shade trees and bushes against San Jose and Oyster Shell Scales; also for peach leaf curl and brown rot of peaches. 1 lb. makes 3½ to 5 gallons. Price, 1 lb., 40c.; 5 lbs., \$1.75; 10 lbs., \$3.00. For packed weight add one pound. 25 lbs., \$6.00; 100 lbs., \$17.50. F.O.B. N. Y.

Nico-Fume (Liquid). A modern insecticide for vaporizing and spraying. Price, ¼ lb., 75c.; 1 lb., \$2.00; 4 lbs., \$6.25; 8 lbs., \$11.50. Not mailable. F.O.B. N. Y.

Nico Fume Paper. For fumigating greenhouses, conservatories etc. Per box of 24 sheets, \$1.25; \$5.00 for 144 sheets; 288 sheets \$8.75. Post Paid.

Nico-Fume Tobacco (Powder). For fumigating greenhouses. Lights quickly, burns evenly, will not go out. No waste; every particle consumed. Protects greenhouses against ravages of insect pests, such as Aphid and Thrip.

Price, 1 lb. tin, \$1.00; 5 lb. tin, \$3.75; 10 lb. tin, \$6.85. F.O.B. N. Y.

Scalecide. Used for the destruction of the San Jose scale. Dilute at the rate of one gallon to twenty gallons of water. Scalecide does not clog nozzles, hose or pump, and is pleasant to use. Trees may be sprayed in winter and early spring before they start to come to bud. Price, qt., 75c.; gal., \$1.75; 5 gals., \$6.25; 10 gals., \$10.60; 15 gals., \$13.50; 30-gal. bbl., \$25.00; 50-gal. bbl., \$35.00. F.O.B. N. Y.

Tobacco Powder, Fumigating. Extra strong dust for fumigating. Price, 25 lb. bag, \$2.00; 50 lb. bag, \$3.50; 100 lb. bag, \$6.00. Express or freight. F.O.B. N. Y.

Tobacco Stems. Used for fumigating and as a fertilizer. Bale, about 100 lbs., \$4.00 Express or freight. F.O.B. N. Y.

Tree Tanglefoot. No crawling insect can pass a band of tree tanglefoot. One pound for 12 foot band 4 inches wide 1-16 inch thick. Price, 1 lb., 60c.; 5 lbs., \$2.75; 10 lbs., \$5.25; 25 lbs., \$11.00. Add one pound for packed weight. F.O.B. N. Y.

Tree Wound Paint. Is an insurance against decay, having penetrating, antiseptic and elastic waterproofing qualities. Sun and rain cannot cause the coating to break from the treated wood. Price, pt., 65c.; qt., \$1.20; gal., \$3.00; 5 gals., \$13.50. Not mailable. F.O.B. N. Y.

Wilson's O.K. Plant Spray. For roses, chrysanthemums, evergreens, and all plants affected with scale or insects, under glass or outside. Price, ½ pt., 40c.; qt., \$1.00; gal., \$3.00; 5 gals., \$12.00; ½ bbl., \$50.00; bbl., \$90.00. Not mailable. F.O.B. N. Y.

Henderson's Superior Fertilizers

(Prices are subject to change without notice)

SPECIAL NOTICE.—We prepay transportation charges on Fertilizers by parcel post, express or freight at our option within the first and second zones (150 miles of New York City). Purchasers, beyond these zones, pay transportation charges.

Adco Artificial Stable Manure. Dry leaves, mixed with Adco and kept moist, turn into excellent manure. So do flower stalks, cuttings, pea vines, and almost any other kind of nonwoody vegetable waste.

Adco is a powder which, mixed with vegetable matter and kept moist, turns the latter into **Real Manure**, but without the odor, flies, etc. The process is perfectly simple and not at all laborious. The method is being generally adopted by gardeners, who find that manure is difficult to procure.

Each shipment is accompanied by simple directions.

(Shipped by express or freight. Purchaser pays Transportation charges.)

Adco, in 25 lb. bags, each \$2.00
(Enough for 12 wheelbarrow loads of garden waste, making one-half ton of manure.)

Adco, in special 150 lb. bags, each \$10.50
(Enough for a heap 10 ft. x 10 ft. x 6 ft., making about three tons of manure.)

Purchaser Pays Transportation on Adco.

Blood and Bone—Henderson's Formula for Lawns, Sports Turf and Grasslands. The high nitrogenous and phosphoric content of this absolutely safe fertilizer has won for it great popularity among greenskeepers and groundsmen for top-dressing sports turf. It is also of exceptional value for garden crops, root crops, corn, grain, small fruits, grape vines, etc., and all grass lands. Price, per 100 lb. bag, \$5.00; 500 lbs., \$22.50.

Quantity required. When broadcasted and harrowed in, use from 1/2 to 1 ton per acre. For garden crops drill in 300 to 500 lbs. per acre.

Bone Meal Henderson's. This is ground fine, decomposes more rapidly in the soil than the coarser grades, and is therefore more quickly beneficial.

Price, 5 lbs., 60c.; 10 lbs., \$1.10; 25 lb. bag, \$2.00; 50 lb. bag, \$3.00; 100 lb. bag, \$5.00; per ton, \$65.00.

Quantity required. For lawns, pasture and mowing lands, 10 lbs. to 200 sq. ft. or 1/2 to 1 ton per acre. For trees and vines 2 to 4 lbs. each. For field and garden crops, 1/4 to 1 ton broadcast and harrowed in. For rose beds, pot plants, etc., one part to about fifty of soil.

Floranid—An Imported Highly Concentrated Nitrogenous Fertilizer. The nitrogen content of Floranid is 92 times greater than that of ordinary manure. Although manufactured from an organic base, it is clean and odorless, and does not produce acidity or an alkaline condition in the soil. Applied at the rate of one teaspoonful to a gallon of water.

Price, 1 lb. can, 50c.; Post Paid. Prices on larger quantities quoted on request.

Garden Fertilizer Henderson's. The ingredients are quickly soluble and immediately commence to feed plants, stimulating them into healthy, luxuriant growth.

Easily applied, either before or after planting, by sprinkling over the surface of the soil and raking in; or it can be mixed with water (stirring well) and applied as a liquid manure. Apply 1,000 to 1,500 lbs. per acre.

Price, 5 lb. package, 60c.; 10 lb. package, \$1.10; 25 lb. bag, \$2.25; 50 lb. bag, \$3.00; 100 lb. bag, \$5.50; per ton, \$75.00.

Granulated Peat Moss. This is an imported product consisting of the deposits of decayed moss. It adds organic matter (humus), improves the texture, conserves moisture and aerates the soil.

Granulated Peat Moss is used extensively for mixing in soil for pot plants, and is an excellent medium in which to grow bulbs. The rich mellow texture that it imparts to the soil with which it is incorporated puts the soil in ideal condition for the making of a lawn, a flower or vegetable garden. It is also used for mulching Perennial and Rose beds as well, as around Evergreens.

Many gardeners use Peat Moss for packing and storing bulbs.

Price, small bale, about 1 1/2 bu., enough to cover 16 sq. ft., 1 in. deep, \$1.50. Large bales, about 19 to 20 bu., covers 240 sq. ft., 1 in. deep, \$4.00. Purchaser pays transportation charges.

Henderson's Fertilizer for House Plants. A safe, clean and high-grade fertilizer free from disagreeable odor, prepared especially for feeding plants grown in pots. It is a wonderful invigorator, producing luxuriant, healthy growth, foliage of rich texture and larger and more brilliant flowers. Detailed directions on each package.

Price, 12-oz. package, sufficient for 25 ordinary-sized plants for one year, 30c. Transportation paid.

Hyper Pulverized Humus. This Humus is not a chemical fertilizer and can be used in any quantity. It is sold as Nature produced it.

Price, 100 lbs., \$3.00; per ton, 2,000 lbs., \$35.00.

Lime, Hydrated—Finely Pulverized. The value of lime as a soil improver is so well known that little need be said about it here. Although it possesses little fertilizing value in itself, it is indispensable for correcting acid soils, improving the mechanical condition of the soil, for grass, farm crops, etc.

Broadcast 10 lbs. to 200 square feet or 1 ton to the acre.

Price, 5 lbs., 45c.; 10 lbs., 75c.; 25 lbs., \$1.50; 100 lbs., \$3.00; 500 lbs., \$12.50. Transportation paid. (See Footnote.) Price delivered in carload lots to your station upon request.

Nitrate of Soda. Nitrate of Soda is quickly dissolved and readily absorbed by plants. It is the most available inorganic form of nitrogen that can be obtained.

Apply between 100 and 150 lbs. to the acre. Water in thoroughly to prevent burning.

Price, 100 lbs., \$7.50. Price on larger quantities on application. 100 lb. bag smallest quantity sold, by freight only. (American R.R. Express Co., will not accept shipments). Transportation paid.

Oyama Plant Food. A Wonderful Japanese Discovery. By using Oyama on house plants it will keep them in bloom all winter and as green and luxuriant as if grown outdoors in the summer. It makes no difference how healthy or delicate your plants may be, Oyama will bring out new flowers and foliage. Price, House Plant Size, makes 6 gallons, 35c. Garden Size, makes 32 gallons, \$1.20; Transportation paid.

Potash, Muriate of. A popular form of the essential potash salts. It is very beneficial when applied to hay or pasture fields at the rate of 100 to 150 lbs. to the acre. All root crops, potatoes, beets, turnips, and the like, require a large proportion of potash in order to develop properly. Price, 100 lbs., \$8.00. Prices on larger quantities on application.

Potash, Sulphate of. Is the most highly concentrated form in which this very important plant food element is obtainable. It should therefore be used with caution and preferably mixed with other fertilizers, using not over 125 lbs. of the sulphate to the acre. Price, 100 lbs., \$8.00. Prices on larger quantities on application.

Poultry Manure Dried and Pulverized. Poultry Manure is especially rich in nitrogen and potash, and is consequently one of the most desirable for the fast growing early vegetable crops. It may, also, be used as a top dressing to be raked into the soil at the rate of from 60 to 100 lbs. per 1,000 sq. ft. Prices, 100 lbs., \$5.00. Prices on larger quantities on application.

Stim-U-Plant. These tablets increase production, heighten color and improve quality immediately. Many professional and amateur growers use them extensively all the year round—from early spring until late fall outdoors, during the winter for pot plants, hothouse benches, etc. They are as fine for evergreens as for all garden and potted plants.

Price, small size, 30c.; 100 tablets, 80c.; 1,000, \$3.75. Transportation paid.

Super Phosphate (Acid Phosphate). A high grade product of treated phosphate rock. It is readily soluble, and is considered as one of the best mediums for supplying the much needed phosphorus to the soil. Price, \$3.00 per 100 pounds.

Sulphate of Ammonia (Dry). As a nitrogenous stimulant there are few fertilizers that are more satisfactory than Sulphate of Ammonia. It is highly concentrated, showing a guaranteed analysis of 25 per cent Ammonia. There are many grades of Sulphate of Ammonia on the market, some of which are saturated with moisture, and are lumpy and practically insoluble.

Our Sulphate of Ammonia is dry and of a fineness that may be almost compared to granulated sugar. Consequently it is easy to apply and distribute evenly, either by hand or mechanical means.

Sulphate of Ammonia is particularly desirable for grass lands, lawns, sports turf or pasture grasses. It is also freely used for grains and market crops. Orchardists use it for stimulating fruit crops. Being readily soluble, it is quickly available.

Price, 5 lb., 85c.; 10 lbs., \$1.45; 25 lbs., \$2.75; 50 lbs., \$4.00; 100 lbs., \$7.00. Prices on larger quantities quoted on request.

Wizard Brand Pulverized Sheep Manure. Convenient, compact, high-grade natural manure dried and ground or pulverized, very nutritious, immediate and lasting in effect. Makes rich Liquid Manure.

Price, Pulverized Sheep Manure, in packages, 5 lbs., 60c.; 10 lbs., \$1.10; 25 lb. bag, \$2.00; 50 lb. bag, \$3.00; 100 lb. sack, \$5.00; ton of 2,000 lbs., \$70.00. Transportation paid. (See Foot Note)

Quantity required. For gardens and field crops 1. to 2 tons per acre—1/2 before plowing, the balance before harrowing. For top dressing grass, use 1 ton per acre, applied in fall or early spring.

Henderson's Lawn Enricher and Top Dresser

PRICES

See Footnote as to Transportation Paid

5-lb. package60
10-lb. package	1.10
25-lb. bag	2.25
50-lb. bag	3.00
100-lb. bag	5.50
2,000 lbs. (1 ton)	75.00

The constant mowing of grass, and removal of clippings also removes a proportion of digested plant food. Therefore if the luxuriance of a lawn is to be maintained, it must be top-dressed, at least once a year with suitable fertilizer. The Henderson Lawn Enricher is a clean odorless lawn dressing which never fails in inducing a rapid and rich green growth. It should be sown broadcast in the spring or fall, and a remarkable improvement will soon be observed. If applied during the summer use half of the quantity and water in thoroughly.

For forming a new lawn a 10-lb. package is sufficient to go over an area of 200 square feet, or 1,000 to 1,500 lbs. per acre.

SPECIAL NOTICE.—We prepay transportation charges on Fertilizers by parcel post, express or freight at our option within the first and second zones (150 miles of New York City). Purchasers, beyond these zones, pay transportation charges.

Books on Gardening Subjects

Delivered Transportation Paid
in U. S. and Possessions

- Henderson's Handbook of Plants.** By Peter Henderson. The standard American dictionary of plants, including vegetables and fruits; a complete work on cultivated plant life. 526 pages, profusely illustrated, price, \$3.50.
- Gardening for Pleasure.** By Peter Henderson. Was written to meet the want of those desiring information on gardening for private use. Its scope therefore embraces directions for the culture and propagation of Flowers, Vegetables and Fruits. 404 pages, fully illustrated, price, \$2.00.
- Henderson's Bulb Culture.** Gives up the up-to-date methods of treatment for all kinds of Hardy and Tender, Winter, Spring, Summer and Autumn Flowering Bulbs, Tubers, Corms, etc. 68 pages, profusely illustrated, price, 75c.
- Henderson's Garden Guide and Record.** By Peter Henderson & Co. It contains brief understandable articles on Vegetable Culture, Flowers from Seeds, Bulb Culture, Lawns, Preparing the Garden Ground, Fertilizers, Insecticides and Plant Diseases, Canning Vegetables, and many other garden pointers.
- It is of convenient pocket size, 5 x 8½ inches, containing 64 pages of text including index. Also 12 pages, one for each month for a diary, 35c.
- Around the Year in the Garden.** By Frederick F. Rockwell. This book tells the work to be done with flowers, fruits, vegetables and lawn through each week of the year, and just how to get results.
- Arranged as a weekly calendar, the book suggests a definite gardening plan and indicates the best time and place for every operation and plant. It is readily adaptable to any season or locality. \$2.50
- Manual of Gardening.** By Prof. L. H. Bailey. A practical guide to planning, making and caring for home grounds, growing vegetables, flowers, fruits, spraying, etc. 3.00
- Home Flower-Growing.** By Emil C. Völz, Professor of Floriculture, Iowa State College. This is a book for the person who would grow flowers and decorative plants at home for pleasure, indoors and out, and who wishes to understand the principles and practices necessary for success.
- The amateur gardener will find here all he needs to know about plant propagation and culture, how and where to grow flowers and plants for best results, in the open ground, as part of the home planting scheme, indoors in winter, in window boxes, hanging baskets, rock gardens, or water gardens; and how to arrange cut flowers for best effects. 3.50
- Home Floriculture.** By Eben Rexford. A practical guide to the treatment of flowering and other ornamental plants in the house and garden. 1.75
- Gardening with Peatmoss.** "Gardening with Peat Moss" is different from most books on this subject in that it contains fundamental information which is the foundation of success in gardening, and which is unknown to, most writers of garden books.
- Based on the science of soil condition it tells in a most interesting and easily understandable manner the exact treatment necessary for the most successful results with all kinds of vegetables, flowers, fruits and shrubs. 1.00
- The Gardener.** By L. H. Bailey. Simple directions for growing the common fruits, vegetables, and flowers in the garden and about the house. An accurate gardening guide, arranged alphabetically for handy reference. 260 pages. 2.00
- Bailey's New Standard Cyclopaedia of Horticulture.** Freshly rewritten in the light of the most recent research and experience largely by experts in their various specialties, all edited by Prof. L. H. Bailey. It is published in three large volumes, sold only in complete sets. Buyers paying transit. 25.00
- The Farm and Garden Rule Book.** By Prof. L. H. Bailey. Full of useful information for farmers, fruit growers, truck gardeners, florists and others. 3.00
- Evergreens for the Small Place.** By F. F. Rockwell. To accomplish the right effect with evergreens requires knowledge of the principles of good design, care in selecting the proper sorts and proper attention after they are planted. All of this information will be found in this book, clearly and plainly written by one who is himself a home owner and a garden maker of long experience. 1.00
- The Culture of Perennials.** By Dorothy M. P. Cloud. No flower lover should be without this work. It gives valuable information clearly, treating on the upkeep and making of perennial gardens, both old and new. Beautifully illustrated. 2.50
- A Woman's Hardy Garden.** By Mrs. H. R. Ely. Gives in a charming manner a woman's long and successful experience in handling a large garden of hardy plants, shrubs, bulbs, etc. 2.00
- The Practical Flower Garden.** By Mrs. H. R. Ely. A new book by the author of "A Woman's Hardy Garden". 2.50
- The Garden Month by Month.** By M. C. Sedgwick. A book on hardy flowers grouped according to their month of bloom. Concise descriptions, situations and culture. Lavishly illustrated. 8.50
- Greenhouses—Their Construction and Equipment.** By W. J. Wright. An up-to-date treatise on the construction of greenhouses. The most complete work on the subject. 2.00
- Plant Culture.** By G. W. Oliver. Propagator of the U. S. Dept. of Agriculture. A working hand-book for all who grow flowering and ornamental plants in the garden or greenhouse. 3.50
- Gardening for Beginners.** By E. T. Cook. An exhaustive English work, describing garden and greenhouse plants, bulbs, shrubs, etc., giving proper situations and treatment. It also gives directions for growing vegetables, fruits, etc., in garden and forcing-house. 6.00
- Milady's House Plants.** By F. E. Palmer. An instructive book on the successful culture of plants in the home. 1.00
- 1001 Garden Questions Answered.** By A. C. Hottes. Its purpose is to solve your garden perplexities. When in trouble consult "1001". 2.00
- Greenhouse Management.** By L. R. Taft. Forcing roses, carnations and other florists' flowers, vegetables and fruits under glass; propagation, disease and insects. 2.25
- Greenhouse Construction.** By L. R. Taft. Various styles of greenhouse and plant house structures, also heating, ventilating, etc. 2.25
- A Little Book of Annuals.** By A. C. Hottes. A reliable guide through the season of annual bloom. 1.50
- A Little Book of Perennials.** By A. C. Hottes. For the amateur and professional. 1.50
- A Little Book of Climbing Plants.** By A. C. Hottes. The only book obtainable combining all climbing plants. 1.75

CULTURE OF SPECIAL PLANTS

- The Book of Bulbs.** By F. F. Rockwell. Graphically and authoritatively the chapters deal one by one with the planning and making of bulb gardens, bulbs for winter bloom, the naturalization of bulbs, their propagation, and protection from insects and diseases. As the pages progress, they fulfill this fascinating prospect of the all-year diversity and novelty attainable in bulb-raising. Illustrated. 3.00
- Bulbs That Bloom in the Spring.** By T. A. Weston. Contains all the home gardener requires, regarding bulbs planted in the Fall for Spring display. 2.00
- Spring Flowering Bulbs.** By C. L. Thayer. A new and complete treatise on Spring flowering bulbs for use in gardens, borders and beds. A book for every home gardener. 1.25
- Chrysanthemum Culture.** By Arthur Herrington. A successful private grower. Everything is covered from cuttings to exhibiting. 1.00
- Dahlia Culture, Little Book of.** By W. H. Waite. For the person who wants to grow better dahlias, by a man who is doing it. 1.50
- Gladiolus, The.** By A. C. Beal. Prepared to meet the needs of practical and amateur growers. The instructions if followed will enable anyone to grow this plant successfully. 1.25
- Iris.** By F. F. Rockwell. A handy guide which will bring you success with irises and show new uses and effects possible in your garden. Describes the dwarf, early, German, Japanese, Siberian, water, crested, Spanish, English, Dutch and other types; tells the best soils; what fertilizers to use; how to plant; and what care is necessary. Tells how to propagate stock for your own use. 54 illustrations, 80 pages. 1.00
- Iris, The.** By J. C. Wister. This book presents in a clear and convincing manner the simple requirements of this flower. Complete and practical. 1.25
- Garden Lilies.** By I. Preston. The mission of this book is to teach the amateur the art of growing garden lilies. 1.25
- Lilies, How to Grow in the Garden (Garden Cinderellas).** By Helen M. Fox. Foreword by E. H. Wilson, keeper of the Arnold Arboretum. This is the only complete and practical book on Lily growing for the amateur gardener. Mrs. Fox has grown these beautiful flowers in her own garden for 14 years; she knows every detail of their culture from experience, from careful study, and from collaboration with other growers. 269 pages; 4 color plates, 29 halftones, 18 line drawings. 5.00
- American Orchid Culture.** By Prof. E. A. White. Orchid Culture, Sources of Orchid Plants, Orchid Houses and Their Equipment, Propagation, General Culture, Hybridization, Marketing, Orchids for Beginners, The Orchid Growing Industry, Development of the United States, Some American Establishments, The Orchid and its Species. 227 pages, 66 halftones, 8 full page color plates and 7 sketches. 4.50
- Peony Manual.** By Harrison. Cultivation and propagation.50
- The Rose in America.** By J. Horace McFarland. 232 pages. Beautifully illustrated in color and sepia, this new and enlarged edition will have an important place on every rose fancier's book shelf. 3.00
- Roses and Their Culture.** By S. C. Hubbard. A new and practical guide on the propagation, culture and history of the rose. 1.25
- Rose Growing, Commercial.** By Eber Holmes. Modern methods of growing the rose for market purposes under glass and outdoors. 2.00
- Shrubs.** By F. F. Rockwell. The home owner will find in this book brief but complete and usable information on how to enhance the beauty and value of his place with shrubs. 1.00
- Violets, How to Make Money Growing.** By G. Salford. A popular treatise giving helpful suggestions on violet growing. 30
- Practical Violet Culture.** By N. Coon. A new book on growing and marketing violets for profit. 1.75

HENDERSON'S GRAND NEW EXHIBITION HYACINTHS

(For Illustration see Page 12 of Color Section.)

Hyacinths are among the most popular and satisfactory hardy flower bulbs grown. Their wax-like bell-formed flowers, borne in buxom trusses of matchless beauty and also delightfully fragrant. The colors, shades and tints are wonderfully varied, from purest white through blush, pink, rose, etc., to deepest red, and from daintiest porcelain through blue to black purple, from cream through yellows to orange and rosy apricot, etc. Hyacinths succeed with every one and may be had in flower throughout the winter, grown either in pots of soil or glasses of water, while for gardens or bedded on the lawn they are very satisfying and effective, furnishing as they do the first good show of spring flower.

Single Belled Varieties—"Top Roots"

Price, 30c. each, \$3.00 per dozen, \$22.50 per 100

- Arentine Arendsen.** A new early snow-white variety; large broad petalled bells and splendid erect spike.
- Bismarck.** A grand new variety producing a large spiked well furnished with immense bells of charming light blue shaded with violet; very early.
- City of Haarlem.** The best and largest yellow; splendid well-filled tall spike; good bells of bright buttercup yellow.
- Enchantress.** Large pure "baby blue," bells, compactly filling the tall handsome well-rounded spike.
- General De Wet.** A pink sport of Grand Maitre, usually throwing two or more strong, well-filled spikes. Color, lively pink with a white throat.
- Hofgaertner Kunert.** Exquisite soft pink and blush; large bells and truss.
- Ivanhoe.** Glossy purplish indigo with a white, throat, tall spike and large bells.
- Jacques.** This beautiful hyacinth is known in our trial grounds as "The Big Pink," the spike being very large, tall and well-filled with very large bells of an exquisite shade of wirm rose-pink.
- Lady Derby.** Unusually large thick waxy bells of the loveliest shade of rose pink; spike ideal, strong, tall and well-filled.
- Lord Balfour** Enormously large broad spike of waxy bells; coloring attractive and unique; claret-purple edged reddish mauve.
- Menelik.** The darkest of all hyacinths, being almost black; the best and most brilliant of its color; fine large truss.
- Perle Brilliante.** Splendid large spike of big waxy bells; color sparkling lavender with outside tints of ultramarine blue.
- Queen of Whites.** Large waxy bells of purest white; tall full truss perfect form.
- Queen Wilhelmina.** A very pleasing shade of vivid pink, large, sturdy, well-formed truss and fine bells; early.
- Ruby.** Brilliant ruby-red bells on a tall spike well filled, very distinct.

Double Belled Varieties—"Top Roots"

Price 30c. each, \$3.00 per dozen, \$22.50 per 100

- Chestnut Blossom.** Exquisite blush pink, shading to deeper rose pink; bells very large and forming a large fine spike.
- Delicate.** Exquisite porcelain bells touched with light blue, bells very large and double, spike fine.
- Edison.** Splendid large, double bells of rosy flesh color; fine tall spike.
- Grande.** An extra fine variety, beautiful large double bells of pure white; grand spike.
- General Kohler.** Very large double bells of deep, bright blue, on a tall spike.
- Princess Metternich.** Very large double bells of rosy white, tall erect, well-filled spike.
- President Roosevelt.** A fine new variety producing large double bells on a big compactly filled spike, color lively rose-pink.
- Sir Rowland Hill.** The best double yellow, really fine double bells of bright rich yellow; good full spike.

COLLECTIONS OF EXHIBITION HYACINTHS

- Collection A. 1 each of the 15 Single Belled Varieties. \$3.50
- Collection B. 1 each of the 8 Double Belled Varieties. \$2.00

HENDERSON'S DOUBLE

Dutch Named Hyacinths

All Select First Size Bulbs, not "Seconds" that may be sold at a lower price

Double Hyacinths are not as popular as the single-belled varieties; for as a class the "doubles" although their individual bells are large and beautiful do not make as well-filled trusses. For this reason we confine our list of varieties to a few of the very best. (See illustration.)

Price 25c. each, \$2.50 per dozen, \$18.00 per 100

DOUBLE WHITE AND TINTED HYACINTHS

- Isabella,** white suffused with rosy blush, enormous double bells and large well-filled spike.
- Bouquet Royal,** an old favorite early variety and still hard to beat; double pure white bells on tall spike.

DOUBLE RED ROSE AND PINK HYACINTHS

- Groot Voorst,** large very double bells of blush pink with darker center; good spike.
- Noble par Merite,** deep pink, very large ne double bells, tall spike; good forcer.

DOUBLE YELLOW AND ORANGE HYACINTHS

- Goethe,** a popular old variety salmon yellow with pinkish center; double bells and good spike.
- Sunflower.** Splendid deep-buff-yellow.

DOUBLE LAVENDER, BLUE AND PURPLE HYACINTHS

- Blocksberg,** light blue shaded darker blue; double bells on tall spike.
- Garrick,** lavender tinted blue; fine compact spike of double bells.

The Hyacinth collection "Q" is beautiful the size of the bulbs exceptional.

Mr. W. H. Greenfield,
St. Albans, Vt.

I was much pleased with the Bulbs from you last fall. I never saw nicer Hyacinth Bulbs sent out by any firm.

Mrs. F. A. Leonard,
Alma, Mich.

"It is my desire that you should know what splendid results I had from the Hyacinth and Narcissus bulbs I bought from you last October. All the bulbs bloomed, and the Hyacinths King of the Belgians and Bouquet Royal made lovely potted plants."

Mrs. Lillie R. Moseley,
Stonewall, La.





Henderson's "Special" Hyacinths

FOR BEDDING OR POT CULTURE WITHOUT NAMES—CHEAPER THAN NAMED VARIETIES—FAR BETTER THAN MIXED

They are the same age as the first size Named Hyacinth offered by us from which these are the second selection. They are of great value for bedding in designs, enabling one to obtain the exact color effect desired. In beds, borders, etc., set the bulbs 5 to 6 inches apart and 4 inches deep measuring from the top of the bulb. When freezing weather has set in and a light crust has been frozen on the soil, then cover the bed with leaves, straw, marsh hay or reeds to a depth of from four to six inches; this protects not only from severe freezing but from equally injurious unseasonable thaws. They are much used for winter blooming in pots. Plant or pot hyacinth bulbs between September and the last of November—the earlier the better—as it gives them a longer period to make roots before winter sets in and the flowers will be better developed.

Plant 1 bulb in a 5-in. pot, 3 bulbs in a 6 or 7-in. pot, 6 or 7 bulbs in an 8-in. pot or pan.

SINGLE SPECIAL

Crimson
Rose Pink
Snow White
Lavender Blue
Dark Blue
Yellow
Mixed Colors

DOUBLE SPECIAL—

Pink
Snow White
Lavender Blue
Dark Blue
Yellow
Mixed Colors

Price—20c. each, \$2.00 per dozen, \$15.00 per Hundred.

HENDERSON'S SUPERIOR Named Single Dutch Hyacinths

All "Select First Size Bulbs"—Not "Seconds" that are offered at lower prices

For bedding purposes varieties that flower at the same time must be selected. Varieties prefixed with a * are especially suited for bedding as well as for pot culture.

PRICE—25c. EACH, \$2.50 DOZEN, \$18.00 per HUNDRED
Six Bulbs of a Variety Sold at the Dozen Rate, 25 at the Hundred Rate

Single Tinted White Hyacinths

General Vetter. Large spike of waxy bells of a pleasing bluish white.

Mr. Plimsol, an old but good variety with large bells of bluish white; large broad spike.

Single Blush and Pink Hyacinths

***Gigantea,** a popular old variety, a fine forcer; color blush pink shaded darker; spike large and compact.

Moreno, bright pink, large bells and tall well-filled spike, splendid for bedding and forcing.

Single Dark Blue and Purple Hyacinths

***King of Blues,** dark glossy indigo blue, fine bells, compactly furnishing a tall well-rounded spike.

***Marie,** dark violet blue large well-formed spike, good bedder.

Single Lavender and Light Blue Hyacinths

***Grand Maitre,** deep lavender blue with darker blue shading very large and handsome spike.

***Johan,** beautiful silvery lavender tinged with rosy lavender; very large waxy bells and a grand broad spike.

***Queen of the Blues,** beautiful sky blue with a silvery sheen; large well topped full spike; not early but grand.

Single Yellow and Orange Hyacinths

***King of Yellows,** rich deep yellow; tall handsome spike of large bells; not early.

Marchioness of Lorne, rosy salmon.

Single Dark Rose and Red Hyacinths

***Garibaldi,** rich glossy crimson; splendid spike, well furnished with good-sized bells; early and a fine forcer.

***Gertrude,** bright carmine rose; fine compact, upright spike excellent for either bedding or forcing.

***King of the Belgians,** (Roi des Belges) brilliant blood scarlet; fine, upright spike, splendid bedder.

Single Pure White Hyacinths

La Grandesse, purest snow white, tall well furnished spike of large bells; always admired.

L'Innocence, a very fine, pure white, spike massive; bells large.



Ask for our booklet "How to Grow Bulbs." It is sent free with every order.



Early Roman Hyacinths

Roman Hyacinths are extensively used for "forcing" for cut flowers. The white Roman Hyacinth is the earliest, best and most floriferous variety, though the pink, and light blue are very beautiful and supply a variation of color.

They are all easily grown in pots of soil and if potted in September, the pots plunged in the open ground for a month until the bulbs are well rooted, and then brought in the house they can be had in flower in November or December, and from that time a succession of flowers may be enjoyed by bringing in from the plunge or cellar a pot or two of the rooted bulbs at intervals of about two weeks. A five-in. pot is large enough for 3 bulbs, a six-inch pot or pan for 6 bulbs, a seven-inch pot or pan for 8 bulbs. Roman Hyacinths are not hardy enough for open ground planting north of Washington, but where the winters are mild, especially if lightly protected with mulch they thrive excellently in the garden.

EARLY WHITE ROMAN HYACINTHS	Each	Per Doz.	Per 100
Extra size bulbs.....	\$.25	\$2.50	\$18.00
EARLY PINK ROMAN HYACINTHS	Each	Per Doz.	Per 100
First size bulbs.....	\$.15	\$1.50	\$12.00
EARLY LIGHT BLUE ROMAN HYACINTHS	Each	Per Doz.	Per 100
First size bulbs.....	\$.20	\$2.00	\$15.00

Spring Flowering Crocus Including New Hybrid Varieties

As edgings to beds—and bordering walks—or as undergrowth among tulips, hyacinths, daffodils, etc., they are very effective as the flowers are over when the other bulbs begin blooming, and then the crocus foliage forms a beautiful grass like setting for the later flowering bulbs.

Crocus are also easily flowered in the house in winter, grown in pots and pans of soil. For instructions see leaflet "How to Grow Bulbs" sent with every order.

We have discontinued offering the cheap mixtures of Crocus as the larger bulbs—produce more and larger flowers. (See illustration.)

WHITE CROCUS

King of Whites. A grand new variety, producing long snow-white flowers. (See letter D.)

May. Lovely round petalled pure white flowers of great size.

Mont Blanc. An old favorite, large pure white.

BLUE AND PURPLE CROCUS

Baron von Bruno. A large deep purple. (See letter E.)

David Rizzio. Deep lavender shaded purple.

Hero. A new hybrid; dark glossy purple. Extra large and fine.

Maximilian. Beautiful sky-blue flowers, distinct. (See letter B.)

STRIPED CROCUS

Albion. A fine large lavender striped white and violet. (See letter C.)

Cloth of Silver. White feathered and striped with lilac and purple.

Fantazy. A new hybrid; immense flowers of light gray striped dark blue.

YELLOW CROCUS

Cloth of Gold. The earliest of all, very prolific yellow veined golden brown.

Yellow Mammoth. The largest flowering sort of this color. (See letter A.)

Price, 70c Per Dozen \$5.00 Per 100, \$45.00 Per 1,000.

MIXED GIANT FLOWERING CROCUS

All colors and shades including many new hybrid seedlings so far outclassing the ordinary grade mixtures that we have discarded the latter. 40c. per doz., \$3.00 per 100, \$27.50 per 1,000.

Dutch Roman Hyacinths

The smaller or three-year old bulbs of some varieties of Dutch Hyacinths produce, considering their size, beautiful spikes of bloom, not as large nor furnished with as many bells as older-full-sized bulbs but still so satisfactory for their low price that they are extensively grown for winter flowers, forced either in "flats" pans or pots. They may be had in flower from January on—thus succeeding the earlier French Romans. The bulbs may be placed very near together—say—an inch apart—requiring 7 or 8 bulbs for a 7-inch pan or 5 bulbs for a 5-inch pot or pan.

VARIETIES OF DUTCH ROMAN HYACINTHS

Crimson, Rose, Pink, White, Light Blue, Deep Blue, Mixed Colors

Price, 10c. each, \$1.25 per doz., \$9.00 per 100.



American Grown Narcissus Daffodils and Jonquils

Among spring flowering bulbous plants the Narcissus family is one of the most important and of world-wide popularity. With the exception of the Polyanthus varieties (offered on page 29) all are as hardy as rocks, grow, increase and flower year after year. They may be grown in garden beds, among hardy plants in herbaceous borders, or "naturalized," that is, grown as if wild in outlying portions of the lawn or grounds, on terraced slopes, and along semi-shaded paths. As cut flowers Narcissus are especially useful being of lasting quality and vasing beautifully.

CULTURE. The bulbs should be planted as early as convenient in the autumn to make root growth before winter sets in. The bulbs may be left undisturbed for several years on good loamy soils. The depth to plant varies according to the size of the bulbs—a covering of 2 to 3 inches of soil is about the average. The distance apart should be 3 to 6 inches according to the size of the variety. For greenhouse or window culture treat same as Hyacinths, but plant three or more in a pot, instead of single bulbs. Send for our pamphlet "How to Grow Bulbs" sent free.

NOTE.—The "perianth" is the surrounding row of petals or wings. The trumpet "crown" or "cup" is the center portion of the flower.

Giant Trumpet Varieties

	Each	Per Doz.	Per 100
Albicans. This variety is also known as the "White Spanish Daffodil." It is creamy white, with a silver white trumpet elegantly recurved at the brim. The flowers are borne on stems 14 inches high	\$0.35	\$3.50	\$25.00
Emperor. Color richest yellow; trumpet and perianth immense in size often measuring 3½ inches across. The stiff stems are 20 inches in height. (See illustration.) \$130.00 per 1,000	.15	1.75	14.00
Empress. The best of the two-colored trumpet varieties. The perianth is white, and the trumpet rich yellow; the entire flower is of great substance and is carried on strong stems 20 inches high. (See illustration.) \$130.00 per 1,000	.15	1.75	14.00
King Alfred. One of the largest pure yellow Daffodils immense flowers of intense yellow; trumpet large and open with a deeply fluted mouth; vigorous and free; height 24 inches	.30	3.00	22.00
Mme. De Graaff. A desirable and graceful variety, trumpet and perianth, pure white	.15	1.75	14.00
Olympia. A much improved and enlarged Emperor, very free-flowering and exceptionally hardy. This is also ranked as a leading cutflower variety. Height 16 inches	.25	2.50	18.00
Robert Sydenham. A grand hardy variety. Perfect sulphur yellow perianth, exceptionally large yellow trumpet, handsomely frilled, consistent winner at the shows, height 18 inches	.35	3.50	25.00
Sir Francis Drake. Clear yellow, large, very early, long stemmed cut flower and show variety, also a fine bedding sort, height 18 inches	.30	3.00	22.00
Spring Glory. Long yellow trumpet, reflexed brim, perianth clear white	.20	2.00	15.00
Van Waveren's Giant. Perianth primrose, bright yellow trumpet one of the best in our "Giant" class, height 20 inches	.30	3.00	22.00
Victoria. A good bicolor famous for large and durable flowers; perianth very broad, creamy white in color; large fluted trumpet rich yellow, height 18 inches. \$130.00 per 1,000	.15	1.75	14.00

Medium Trumpet Varieties

Sir Watkin. (<i>Incomparabilis</i>). This is an old and popular variety, perfectly hardy, and will thrive well either in the garden, or for culture indoors during the winter. The flowers of Sir Watkin, which often measure 5 inches across, have a deep primrose yellow perianth, and a more deeply tinted yellow cup or trumpet. \$110.00 per 1,000	.15	1.50	12.00
Lucifer. (<i>Incomparabilis</i>). A very attractive hardy variety, large white perianth with glowing orange-red cup, height 18 inches	.15	1.50	12.00
Barri Conspicuus. (<i>Barri</i>). It thrives in gardens, and for naturalizing in grass or semi-wild places it is magnificent. For winter-flowering in pots or pans of soil it is beautiful. Barri Conspicuus has a broad spreading yellow perianth; crown edged with orange-scarlet; a robust strong grower; height 20 inches. \$85.00 per 1,000	.12	1.25	9.00
Bath's Flame. (<i>Barri</i>). Yellow perianth, deep yellow cup with broad edge of orange red. The petals are very long and pointed, giving the flower a distinct and outstanding character, height 18 inches	.40	4.00	30.00
Sea Gull. (<i>Barri</i>). One of the largest and most beautiful daffodils in this class. The spreading perianth is pure white, and the cup is canary color edged apricot. Height 21 inches	.15	1.50	14.00
Crystal Queen. (<i>Leedsii</i>). Pure white perianth, pale primrose cup passing to white afterwards; flowers 3½ inches, height 15 inches across, a giant Leedsii	.40	4.00	30.00
Mrs. Langtry. (<i>Leedsii</i>). The fragrant "Silver Winged" Leedsii's are hybrids between white Trumpet Daffodils and Poeticus. Mrs. Langtry is a free-flowering variety, each bulb usually producing several flowers; broad white perianth, and white cup opening pale primrose, height 16 inches. \$85.00 per 1,000	.12	1.25	9.00
Southern Gem. (<i>Leedsii</i>). Beautiful pure white petals, large lemon yellow crown, a splendid flower of rare symmetry, forces well, height 16 inches	.15	1.75	14.00
White Lady. (<i>Leedsii</i>). A grand new giant flowering variety, concededly one of the best in commerce. It is virtually a white "Sir Watkin." The broad perianth is pure white surrounding a pale citron frilled cup which turns white. Height 15 inches	.15	1.50	12.00

Six Bulbs of a Variety Sold at the Dozen Rate, 25 at the Hundred Rate



Narcissus and Daffodils Continued

The Hardy Cluster-Flowered Daffodils *Narcissus Poetaz*

These new hybrids between Poeticus and Polyanthus are hardy, healthy, strong growers, some of the varieties attaining a height of 2 feet. The Poeticus-like flowers are borne in clusters like the Polyanthus. They soon form large luxuriant clumps. (See engraving.)

Elvira. A large flower of remarkably good substance, carrying three or four flowers on long stems; and producing two to three stems to one bulb. Very fine for cutting; strong-growing and free flowering. Color pure white with yellow cup, height 24 inches. (See illustration.) 20c. each; \$2.00 per doz.; \$15.00 per 100.

Helios. The perianth is yellow with a deeper golden yellow cup. The bulb produces three stems usually, and there are seven to eight broad flowers borne on each stem. This is the largest yellow variety. 20c. each; \$2.00 per doz.; \$15.00 per 100.

Joconde. Pale yellow petals, deep golden cups, 4-5 large flowers on long, stems, ideal cut flower and exquisite show variety. 20c. each; \$2.00 per doz.; \$16.00 per 100.

"Poet's" or Pheasant's Narcissus Eye

Poeticus Ornatus. This is the early flowering "Poets Narcissus" so popular for winter forcing, as well as for gardens and for "naturalizing." The perianth is pure snow-white with a beautiful contrasting saffron yellow cup, margined scarlet. It thrives wonderfully in gardens, or in semi-wild places planted among grass; and provides a continuous display of bloom for weeks. Height 18 inches. 12c. each; \$1.25 per doz.; \$9.00 per 100; \$85.00 per 1,000. (See illustration.)

Horace. Pure white perianth, conspicuous red eye, free flowering and strong stemmed, a splendid forcing variety. 20c. each; \$2.00 doz.; \$15.00 per 100.

Narcissus Jonquilla or Jonquils

Campernelle. Much prized for its small golden flowers which are produced in great profusion. Perfectly hardy for the outdoor garden, and also a good variety for winter flowering in pots of soil. The yellow flowers are borne four to six on stems about eighteen inches high. \$1.25 per doz.; \$9.00 per 100.

Double Narcissus and Daffodils

Orange Phoenix. Beautiful double white flowers with orange nectary. Splendid for pot culture and cutting; 17 in. 20c. each; \$2.00 per doz.; \$15.00 per 100.

Primrose Phoenix. Primrose yellow, large rose-shaped flower, long stems. We recommend this variety as most satisfactory. 20c. each; \$2.00 per doz.; \$15.00 per 100.

Sulphur Phoenix. Beautiful snow-white flower interlaced pale yellow 20c. each; \$2.00 per doz.; \$15.00 per 100.

Double Von Sion. The true "Double Yellow Daffodil." Rich golden-yellow perianth and trumpet. This is the old favorite so highly prized in old-fashioned gardens. (See illustration.) 15c. each; \$1.50 per doz.; \$12.00 per 100; \$110.00 per 1000.

Mixed Narcissus and Daffodils

FOR NATURALIZING IN BORDERS, WILD GARDENS, ETC.

These are a Special Mixture of All Varieties. They are very suitable for growing in masses for garden decoration, and are particularly adapted for mixed borders, "naturalizing" in shrubbery by woodland walks, in woods by streams and lakes and semi-wild, outlying grounds. They are perfectly hardy and will flourish and increase for many years. Price, \$1.00 per doz.; \$7.50 per 100; \$70.00 per 1,000.

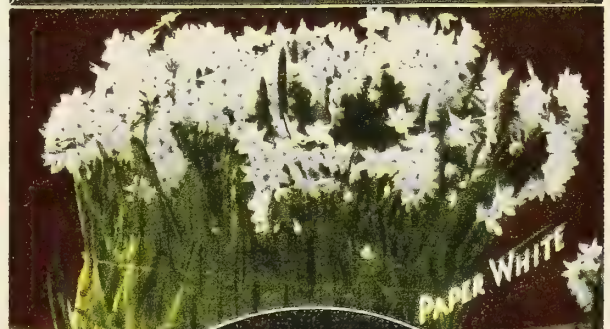
Polyanthus Narcissus

The *Polyanthus* varieties of Narcissus are deliciously sweet scented, of the easiest culture, very free flowering and continue long in bloom; bearing from six to one dozen flowers each. South of the freezing belt they are splendid for gardens and "naturalize" well. For growing in pots or pans of soil or in shallow dishes in pebbles and water, they are especially adapted and can be had in flower in the house from Christmas throughout the winter by bringing the pots of rooted bulbs in from the frame or cellar every week or two.

Grand Soliel D'Or. All Yellow *Polyanthus*. A beautiful variety bearing clusters of golden yellow flowers with orange cups. 25c. each; \$2.50 per doz.; \$18.00 per 100.

Paper White Grandiflora. All White *Polyanthus*. A large flowering type producing snow-white flowers of large size and good substance in trusses. Much used for early forcing for cut flowers, being brought in without difficulty by Christmas or even earlier. (See illustration.) 10c. each; \$1.00 per doz.; \$7.50 per 100; \$70.00 per 1000.

The proper depth and distance apart to plant bulbs is shown in our booklet, "How to Grow Bulbs," sent free.



EASTER LILIES, ETC. (For Indoor Culture)

Bermuda Easter Lilies

Lilium Longiflorum Harrisii

The short time required to bring this peerless Lily into flower renders it invaluable. The flowers are delightfully fragrant pure waxy-white, and if cut when partially open, can be kept for two weeks. Bulbs potted in September can be had in flower in December, if desired.

A succession of bloom can be kept up throughout the winter by bringing in a few pots of bulbs from cold frames at intervals. Blooming plants in pots are suitable for Easter offerings and presents. We offer three types of the Longiflorum Lily usually grown by the florist. Of the three types we recommend *Lilium formosum* as the best for private conservatory growing.

Bulbs Ready for Shipment—August to December. (See engraving.)

Extra Size Bulbs. (7 to 9 inches in circumference.) This is the most popular size to grow as pot plants for decoration and equally as valuable for cutting. Bulbs should produce from 8 to 12 flowers. 25c. ea.; \$2.50 doz.; \$18.00 per 100.

Monstrous Size Bulbs. (9 to 11 inches in circumference.) These are usually grown for specimens in pots, for exhibitions and decorations. Each bulb should produce from 12 to 18 flowers. 50c. ea.; \$5.00 per doz.; \$35.00 per 100.

The Formosa Easter Lily

Lilium Longiflorum Formosum

This is an improved type of the well known *L. longiflorum* also known as the "Easter or St. Joseph's Lily." The plants are of healthy strong growth—about 3 feet high and produce beautiful snow white trumpet shaped flowers, 6 to 8 inches long. This lily is largely grown by florists who "force" them as pot plants and for cut flowers. It is not quite as early as *Lilium Harrisii*. *For Shipment, September to December.*

Extra Size Bulbs. 8 to 10 inches. 30c. ea.; \$3.00 doz.; \$22.00 per 100.

Japan Easter Lily

Lilium Longiflorum Giganteum

This Japanese type is highly thought of for late winter and Easter forcing—though the bulbs of this variety are often carried over in cold storage to be brought into bloom at any desired time the succeeding year. The plant is of sturdy stocky growth—with black marked stems. The flowers of purest white are the largest of the longiflorums. *For Shipment, October to December.*

Extra Size Bulbs, 8 to 10 inch. 40c. ea.; \$4.00 doz.; \$30.00 per 100.

Six Bulbs of a Variety Sold at the Dozen Rate, 25 at the Hundred Rate.

Henderson's Selected Calla Lilies

A well-known plant of easy culture for winter bloom. It makes a handsome house or window plant. To aid profuse blooming keep dormant from the middle of June until the last of September; pot on receipt in good, rich soil, using 6 to 8-inch pot, give light and heat in abundance. Both foliage and flowers are attractive in this desirable winter bloomer.

Calla Aethiopica, or Lily of the Nile

This old favorite White Calla Lily is too well known to require any description. We offer dry roots, as they are superior for forcing and winter-flowering purposes; they come into bloom quickly and require less room making less foliage. Extra large bulbs, 35c. ea.; \$3.50 per doz.; \$25.00 per 100.

The Godfrey Everblooming Calla

This new hybrid is a true ever-blooming variety. A good plant, produces an astonishing quantity of large, snow-white, slightly fragrant flowers. Compared with the ordinary white Calla, it gives three flowers to one. The plant is dwarf, compact, strong growth, about 18 inches high, with an abundance of dark green leaves. Dormant bulbs, 25c. ea.; \$2.50 per doz.; \$18.00 per 100.

Yellow Calla, Elliottianna

The yellow Calla; large rich, deep golden flowers often 4 to 5 inches across at the mouth; habit of growth and foliage like the old favorite white Calla excepting the leaves of Elliottianna are spotted with white. (See engraving.) Dry bulbs, 35c. ea.; \$3.50 per doz.; \$25.00 per 100. (Ready in November.)



HARDY LILIES

Lilies commence flowering in June and with the various species maintain a continuous and unbroken succession in the shrubbery border. Most Lily Bulbs, being of late maturity, are not ready before October, November and December (the best time to plant them). Where the ground is liable to freeze up before the late lilies arrive it should be mulched with 6 or 8 inches of leaves or manure to keep it from freezing, so the bulbs may be planted on arrival.

Auratum. (The Golden Rayed Lily of Japan.) The flowers are pure white, thickly studded with crimson spots, while through the centre of each petal runs a clear golden band. Fully expanded, the flowers measure nearly a foot across and possess a most delicious fragrance. Season of bloom from July to October. 3 to 5 feet. (See illustration.)

Extra size bulbs.....50c. each; \$5.00 per doz.; \$37.50 per 100
Mammoth bulbs.....75c. each; \$7.50 per doz.; \$60.00 per 100

Candidum, Henderson's Superior Northern Crown. This is the ever popular fragrant, snow-white, hardy garden Lily, which is also known as "Annunciation Lily," and "Madonna Lily." It grows 3 to 4 feet high, and blooms in the open ground in June. When grown in masses these lilies are especially effective against the surrounding greenery of shrubs, etc. Price, extra large bulbs, 40c. each; \$4.00 per doz.; \$30.00 per 100.

Canadense. Our native Canadian Lily. Bright yellow marked with copious spots of red; blooms in June and July. 2 to 3 feet high. 25c. each; \$2.50 per doz.; \$18.00 per 100.

Canadense Flavum. A pure yellow selection of the above. 25c. each; \$2.50 per doz.; \$18.00 per 100.

Canadense Rubrum. Crimson with dark spots. 25c. each; \$2.50 per doz.; \$18.00 per 100.

Elegans Mixed Varieties. A fine dwarf Japanese variety of easy culture. Colors shading from yellow to deep blood red. Flowers June-July. 25c. each; \$2.50 per doz.; \$18.00 per 100.

Hansonii. (The True Japanese Yellow Martagon.) This is one of the best of the Martagon group, unsurpassed in vigor of growth and beauty by any other lily. The flowers are large, of a bright yellow, tinged orange and spotted maroon, with thick wax-like petals. Very robust and free. Flowers in June. 75c. each; \$7.50 per doz.; \$60.00 per 100.

Henryi. (The Yellow Speciosum.) A new rare and very beautiful Lily from China. It is very hardy, and without doubt one of the best Lilies for garden culture. The flower stalks, 3 to 5 feet high, carry 5 to 8 large flowers each, rich apricot-yellow, lightly spotted with brown. The shape and size of the flowers has suggested the name "Yellow Speciosum." Flowers July-August. 75c. each; \$7.50 per doz.; \$60.00 per 100.

Regale ("A Royal Beauty"). The flowers are white, slightly suffused with pink, with a beautiful shade of canary yellow at the center, blending out part way up the trumpet. The fragrance is fascinating. A splendid hardy Lily for the garden, flowering in July. Well-grown bulbs often produce five to eight blooms. 50c. each; \$5.00 per doz.; \$35.00 per 100. (See illustration.)

Speciosum or Lancifolium. The varieties of L. Speciosum or Lancifolium are perhaps the most popular Lilies grown. They are easy of cultivation, and produce large flowers of delicate beauty on strong stems; height, from 2 to 4 feet; blooming in August. The varieties are: (See illustration.)

Speciosum Album. White. Large bulbs, 60c. each; \$6.00 per doz.; \$45.00 per 100.

Speciosum Rubrum. (Roseum). White, shaded and spotted with rose and red. (See illustration.) Large bulbs, 60c. each; \$6.00 per doz.; \$45.00 per 100.

Speciosum Melpomene. Rich blood-crimson, heavily spotted. Large bulbs, 60c. each; \$6.00 per doz.; \$45.00 per 100.

Superbum. (Turk's Cap Lily.) One of our native species. Grown in good rich soil, it will produce upwards of 20 beautiful orange, tipped red, spotted flowers in a pyramidal cluster. 3 to 5 feet high. Blooms in July. 30c. each; \$3.00 per doz.; \$20.00 per 100.

Tigrinum Splendens. (Improved Tiger Lily.) The grandest of the Tigers, black polished stem. Very large pyramids of flowers, orange red, spotted with black, 3 to 5 feet high. Blooms in August. 25c. each; \$2.50 per doz.; \$18.00 per 100.

Tigrinum Flora Pleno. (Double Tiger Lily.) Double bright orange-red flowers spotted with black. Blooms in August. 30c. each; \$3.00 per doz.; \$20.00 per 100.

Umbellatum. Of strong, sturdy habit, growing from 2 to 3 feet high, having large showy flowers in clusters at the summit, flowering in June. The colors range through all shades of red from rose to blackish-crimson, yellow, buff, orange, etc., many being spotted. **Mixed Colors.** 25c. each; \$2.50 per doz.; \$18.00 per 100.



German Iris or Fleur-de-Lis

Iris Germanica and Allied Species

These the true Fleur-de-Lis—but greatly improved—are well termed "Garden Orchids" and they fairly out rival the orchids in wide range of coloring—both in dainty combinations and rich and vivid colors including yellows from light canary to deep golden; blues from soft lavender to intense purples, reds from pinkish mauve to claret and maroon, beautiful bronzes and pure whites, then some are marked and margined with other colors in exquisite harmony and all have showy yellow or orange crests or beards, many of the varieties are delightfully fragrant!

For garden and landscape decoration—groups and masses of them are very effective, being perfectly hardy, thriving and increasing year after year in any sunny situation in ordinarily good soil except a wet one which is liable to cause decay. Our collection contains many new and choice varieties, which will be revelations of beauty to Iris lovers. The roots should be divided and replanted every fourth year—early in September is the best time for the plants are then dormant. The roots are ready for shipment from September 15th to November 15th.



SPANISH IRIS or *Iris Hispanica*

These beautiful bulbous irises have long been known as "the poor man's orchids" and appropriately so because the colorings and markings of the different varieties of Spanish Iris so closely resemble the markings of many specimens of the Orchid family. The flowers of some are four to five inches in diameter and the plants are all extremely graceful. For the adornment of a dinner table nothing could be better and if cut while in bud last about ten days. They are also suitable for pot culture and if planted in pots or boxes and stored in cold frames until they show buds, and then brought into heat they may be had in bloom from April on. (See illustration.)

- Belle Chinoise.** Deep yellow.
- King of the Blues** (Count of Nassau). Fine deep purplish blue.
- King of the Whites.** Pure white with small orange blotch on the falls, fine.
- King of the Yellows.** Very fine golden yellow.
- Louise.** Delicate light blue, early flowering.
- Prince Henry.** Large purplish bronze, one of the best of this color. Price of any of above, 10c. each; \$1.00 per doz.; \$7.50 per 100.

Early Flowering Dutch Iris

Wedgewood. Beautiful large flower on tall stalks. Color, wedgewood blue, one of the best for forcing. Price, 35c. each; \$3.50 per doz.; \$18.00 per 100.

S. for standards, F. for falls

	Each	Per Doz.	Per 100
Afterglow. A soft pink lavender shading to rich yellow through the center.....	\$0.50	\$5.00	
Albert Victor. S. soft blue, F. beautiful lavender, large and fine.	.25	2.50	\$18.00
Ambassadeur. A grand variety of fine color, form and growth. S. bronzy violet, F. dark velvety maroon. Conspicuous orange beard. Tall, vigorous, widely branched, most satisfactory.....	.50	5.00	
Aurea. Rich chrome yellow, the finest pure yellow.....	.25	2.50	18.00
Celeste. Growth vigorous, stalks high branched. S. and F. pale verbena-violet, with suggestions of white throughout.....	.25	2.50	18.00
Cottage Maid. S. silvery blue; F. white boldly tipped and reticulated violet.....	.25	2.50	18.00
Darius. One of the most distinct. S. rich canary yellow; F. lilac, margined white, rich orange beard	.35	3.50	25.00
Dr. Bernice. S. olive, shaded red, F. dark brown red.....	.25	2.50	18.00
Farr's Pauline. S. and F. large, rich pansy-violet; deep orange beard; fragrant.....	.25	2.50	18.00
Innocenza. S. and F. ivory white, crest rich golden. Very delicate and beautiful.....	.25	2.50	18.00
Iris King. S. yellow, F. plum edged yellow.....	.35	3.50	25.00
Lohengrin. S. and F. uniform shade of Cattleya rose, very large.....	.25	2.50	18.00
Medallion. S. yellow, cone shaped, F. heavily veined red, a nice variegated sort.....	.25	2.50	18.00
Madam Chereau. One of the most beautiful; an old variety, always greatly admired. S. and F. white, elegantly frilled with a wide border of clear blue.....	.25	2.50	18.00
Monsignor. S. crimson dotted lavender, inner petals ivory, F. rich crimson edged lavender.....	.25	2.50	18.00
Mother of Pearl. Vigorous in growth and producing its wonderful flowers freely. It is a self color with all the soft iridescent colors of Mother of Pearl. Has been called "The perfect Iris." S. and F. pale bluish lavender with a faint creamy undertone. Large flowers of exceptional substance and perfect form on well branched stems.....	.50	5.00	
Pallida Speciosa. S. lavender, F. deep clear lavender, flowers large and extra fine. Fragrant.....	.25	2.50	18.00
Princess Victoria Louise. S. pale yellow, F. rich violet, edged cream.....	.25	2.50	18.00
Prosper Laugier. S. light bronze red. F. velvety ruby purple.....	.25	2.50	18.00
Quaker Lady. S. smoky lavender with yellow shadings, F. blue and old gold, stigmas yellow. Yellow beard. Odd and attractive.....	.25	2.50	18.00
Queen Alexandra. S. fawn shot with lilac, F. reticulated at base with bronze, beard yellow.....	.25	2.50	18.00
Rhein Nix. Very tall, S. snowy white, F. deep violet blue, white margin. Inner petals ivory.....	.25	2.50	18.00

Mixed German Iris, including many beautiful varieties. Price, 20c. each; \$2.00 per doz.; \$15.00 per 100.

IRIS, THE. By J. C. Wister (New). This book presents in a convincing manner the simple requirements of this flower. Complete and practical. Price postpaid, \$1.25.

New Large Flowering Japan Iris *Iris Kaempferi*

The magnificence of these new Irises surpasses description. The flowers are of enormous size, averaging 6 to 8 inches across, and of indescribable and charming hues and colors, varying like watered silk in the sunlight, the prevailing colors being white, crimson, rose, lilac, lavender, violet and blue; each flower usually representing several shades, while a golden-yellow blotch, surrounded by a halo of blue or violet, at the base of the petals intensifies the wealth of coloring. The Japan Iris besides being very free flowering is perfectly hardy and grows readily in almost any situation, either sunny or partially shady; but the soil should be moist and the plants well supplied with water when flowering. They bloom in great profusion in June and throughout July, coming into bloom when other Irises are faded and gone. Ready September 15 to November 15. (See illustration.)

Single Flowering

	Each	Per Doz.
Amethyst. Very large wavy petals, exquisite lavender shade.	\$.50	\$5.00
Apollo. Pure white, pink center.	.40	4.00
Beauty. Silvery white distinctly veined and suffused indigo blue. Inner petals plum edged white. Very beautiful.	.30	3.00
Clarice Childs. Petunia violet, conspicuous yellow center surrounded with blue cast. Large.	.50	5.00
Ethel J. Marshall. Ivory white splashed and veined dull violet blue petaloids aconite violet edged white, stigmas ivory white splashed with violet cast.	.50	5.00
Granite. Purple, spotted and flaked white. Lilac center	.30	3.00
Mars. Reddish purple, striped and blotched white.	.30	3.00
Painted Lady. White, center blotched light purple, tufts white, with purple edge.	.40	4.00
Red Riding Hood. Fine amaranth veined and suffused white.	.30	3.00
Violet Beauty. Pansy violet, conspicuous yellow blotch in center surrounded with blue cast.	.40	4.00

Double Flowering

	Each	Per Doz.
Catherine Parry. Blue overlaid rosy-red, high tufts in center almost triple.	.30	3.00
Choseiden. Ruby crimson, white halo surrounds the yellow blotches radiating into broad lines. Petaloid stigmas light violet.	.50	5.00
Eleanor Parry. Claret red, flamed white and blue. Compact medium size flower.	.50	5.00
Gold Bound. Pure white, one of the best.	.30	3.00
Kuro Komo. Purple overlaid with dark blue. Yellow blotches, stigmas dark blue bordered purple.	.50	5.00
La Favorite. Large, fine white, freely veined blue, and a rich purple center.	.40	4.00
Mount Hood. Light blue shaded darker, bright orange center.	.30	3.00
Mrs. J. Alexander Hayden. White ground edged and shaded pale violet. Stigmas, white slightly edged and tipped pale violet.	.40	4.00
Pyramid. Violet purple, veined white in center of each petal.	.30	3.00
Rose Anna. Ivory white heavy ruby-red veins, conspicuous yellow blotch, stigmas dark plum.	.40	4.00

Japan Iris Seedlings. Containing many new and beautiful single and double varieties. Price, 25c. each; \$2.50 per doz.; \$18.00 per 100.

Dutch Iris or Iris Hollandia

This variety is generally regarded as a giant strain of early Spanish Iris. The leaves are larger and the flowers appear a week or two earlier than the Spanish Iris.

- E. B. Garnier.** Uniform dark blue. (See color plate letter B.)
- Imperator.** Larger flowering dark blue.
- Therese Schwartz.** Lilac standards, white falls.
- Th. Wijck.** Delightful light blue.
- White Excelsior.** Uniform white. (See color plate letter C.)
- Yellow Queen.** Uniform pure yellow, excellent novelty. (See color plate letter A.)

Price of any of the above, 12c. each; \$1.25 per doz. \$9.00 per 100.





PLEASE NOTE

For other Flowering Bulbs, Grape Hyacinths, Lily of the Valley, Oxalis, Ranunculus, Scilla, Snowdrop and Winter Aconito, see page A of Supplement.

Spring Flowering Bulbs

Continued

Giant Hybrid Amaryllis "International Prize" Strain

Awarded the Prize at the Flower Show New York

The coloring and marking are exquisite; the bulbs are large, and are of sufficient strength and age to produce flowers during winter or spring. They are the most gorgeous bulbous plants known. They throw up spikes from 2 to 3 feet high, bearing enormous wide petalled flowers averaging 8 to 10 inches across and of great substance, some being of rich and glowing colors, others delicately shaded and superbly veined.

Mixed Varieties, \$1.00 each; \$10.00 per doz.

The Amaryllis is the easiest bulb known, for the amateur to grow indoors. They do best in a compost of garden soil with a little sand, and should be grown in a temperature of 50 to 55 degrees in a house. For forcing about ten degrees higher. The size of pot employed will depend on the bulb, for ordinary sized bulbs a six inch pot will be large enough one bulb to a pot. Cover bulb as far up as the neck, and water sparingly until flower shoots appear. Some growers keep them in the dark until the flower shoots are four inches long and then bring them to the light.

Anemone Giant St. Brigid

An improved Irish variety bearing magnificent flowers, double, semi-double and single, 3 to 5 inches across, of the richest as well as the daintiest colors. There is maroon, scarlet, crimson, pink, blue, purple, cream, white, etc., in endless variety. The flowers are borne freely on long stems and are charming. Grow in cold frames in northern states. **Mixed colors**, 75c. per doz.; \$6.00 per 100.

Single Poppy-Flowered. (*Coronaria*.) Large, beautiful saucer-shaped Poppy-like blossoms flowering continuously throughout spring and early summer. **Mixed colors**, 60c. doz.; \$4.50 per 100.

Dielytra, or "Bleeding Heart"

One of the most ornamental of hardy spring-flowering plants, with elegant green foliage and long drooping racemes of heart-shaped pink and white flowers. (*Ready in November*.)

Large Roots, 75c. each; \$7.50 per dozen.

Chionodoxa Glory of the Snow

They produce flower spikes bearing 10 to 15 lovely Scilla-like flowers. They are perfectly hardy, and may be planted as an edging to a bed, or naturalized on the lawn. They are admirable for pot culture winter blooming in the house.

Chionodoxa Lucillae. Bright blue with large clear white center 50c. doz.; \$3.50 per 100; \$30.00 per 1,000.

Chionodoxa Sardensis. Intense deep blue. 60c. doz.; \$4.00 per 100; \$35.00 per 1,000.

Chionodoxa Gigantea. Unusually large flowers of lovely lilac-blue, with conspicuous white centre. 80c. doz.; \$6.00 per 100.

Henderson's Superior Freesias

Freesias are popular for pot culture, flowering in the winter and spring in the conservatory, or window garden. 6 to 8 bulbs should be planted in a 4-inch pot. They can be had in bloom by Christmas if desired, and by having a dozen pots started in the cold frame and brought in at intervals, keep up a display through the winter.

Purity. Produces large sprays of snow-white flowers deliciously fragrant; free blooming and of great value for forcing for cut flowers.

Mammoth Bulbs, 75c. per doz.; \$5.00 per 100; \$45.00 per 1,000.

California. One of the finest yellow varieties. Color bright golden yellow. \$1.00 per doz.; \$7.50 per 100.

General Pershing. (*See letter C*). A beautiful shade of pinkish lavender with yellow lip tinted bronze. \$1.00 per doz.; \$7.50 per 100.

Giant Amethyst. (*See letter B*). Flowers borne on long stems, color a beautiful lavender, the best variety of this shade. Price, \$1.00 per doz.; \$7.50 per 100.

Golden Daffodil. (*See letter D*). We take pleasure in recommending this New Yellow Freesia, the color is a rich golden daffodil yellow having well formed large flowers borne on long rigid stems. Price, 15c. each; \$1.50 per doz.; \$12.00 per 100.

Olivette. (*See letter A*). Beautiful carmine red with yellow throat, yellow blotch on lower petals, very free bloomer. Price, \$1.00 per doz.; \$7.50 per 100.

on lower petals, very free bloomer. Price, \$1.00 per doz.; \$7.50 per 100.

Mixed Hybrids. 60c. per doz.; \$4.50 per 100.

Fritillaria Meleagris

Singular, dwarf spring-flowering plants bearing, large pendant bell-shaped flowers of various colors, yellow, white, black, purple, striped and splashed and checkered in the most curious way. They are invaluable for pot culture and exceedingly pretty when grown in large groups in the garden border or wild garden in a dry situation. **Mixed varieties**, 80c. per doz.; \$6.00 per 100.



Henderson's "Maytime" Collection

OF 10 LONG-STEMMED MAY-FLOWERING TULIPS

To further extend among our friends knowledge of the beauty and charm of these superior bulbs we offer these collections at a very attractive price. We have, in anticipation of a large sale, arranged for an extra large importation from Holland of these varieties.

Yellow Perfection (Breeder), Clara Butt (Darwin), La Tulipe Noir (Darwin), Bronze Queen (Breeder), William Copeland (Darwin), Gesneriana (Cottage), Mahony (Breeder), Picotee (Cottage), John Ruskin (Cottage), Markgraff von Baden (Parrot).

(See pages 5 to 9 for descriptions)

PRICES OF COLLECTIONS

Collection "E,"	30 Bulbs, 3 each 10 varieties\$2.00
Collection "G,"	120 Bulbs, 12 each 10 varieties 7.50
Collection "H,"	500 Bulbs, 50 each 10 varieties 32.50



Henderson's "April Shower"

COLLECTION OF 6 SINGLE AND DOUBLE EARLY TULIPS

Single and Double Early Tulips are the earliest Tulips to bloom and if planted in conjunction with the Darwin and Cottage Tulips a brilliant garden display can be kept up for two months. They may be planted in beds, or in groups among other hardy plants; but if in beds care must be taken to choose those varieties which bloom at the same time.

SINGLE EARLY

Golden Queen. Pure golden yellow; flower of finest form.
Joost Von Vondel White. (Lady Boreel.) Purest white, large flower of finest form; the finest white.

Proserpine. Carmine rose, rich, silky and effective beautifully shaped large flowers.



DOUBLE EARLY

Murillo. (Albino.) Magnificent blush white, shaded rose, large full double flowers; the finest double light pink for garden beds and unrivalled for winter flowering, forcing very easily.



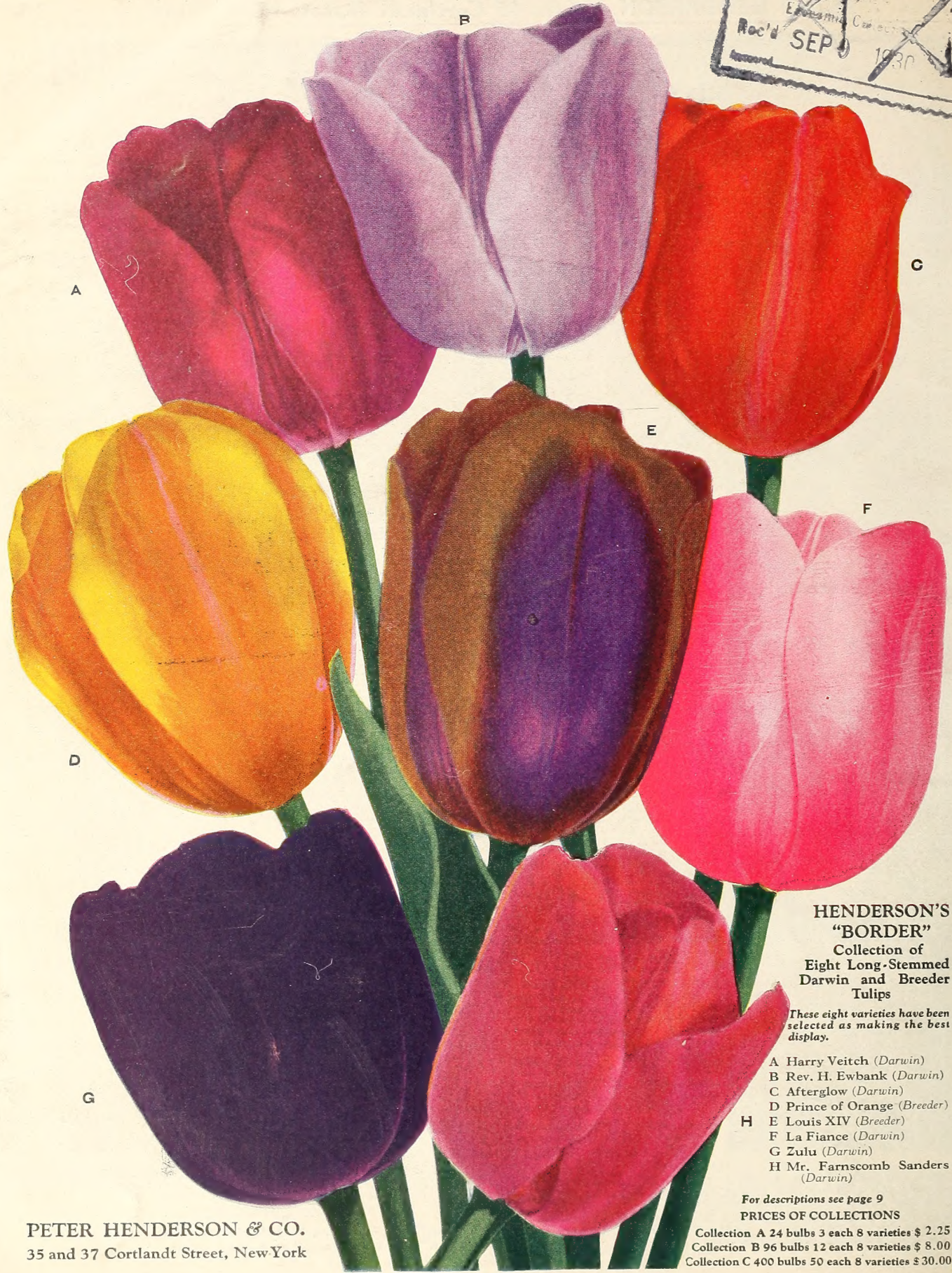
PRICE OF COLLECTIONS

Collection "K,"	36 Bulbs, 6 each of 6 varieties\$3.00
Collection "L,"	150 Bulbs, 25 each of 6 varieties 12.00

Crown of Gold. (Couronne d'Or.) (B-12 in.) Large flower, very double, rich golden-yellow, orange. A fine garden tulip and one of the best double yellows for winter forcing.

Imperator Rubrorum. Splendid bright scarlet, yellow base, a fine full double. A fine Tulip for bedding and the finest of all double scarlets for forcing for winter flowers.

Economic
Economic
Rec'd SEP 1930



**HENDERSON'S
"BORDER"**
Collection of
Eight Long-Stemmed
Darwin and Breeder
Tulips

These eight varieties have been
selected as making the best
display.

- A Harry Veitch (Darwin)
- B Rev. H. Ewbank (Darwin)
- C Afterglow (Darwin)
- D Prince of Orange (Breeder)
- H E Louis XIV (Breeder)
- F La Fiance (Darwin)
- G Zulu (Darwin)
- H Mr. Farnscomb Sanders (Darwin)

For descriptions see page 9
PRICES OF COLLECTIONS

Collection A 24 bulbs 3 each 8 varieties \$ 2.25
Collection B 96 bulbs 12 each 8 varieties \$ 8.00
Collection C 400 bulbs 50 each 8 varieties \$ 30.00

PETER HENDERSON & CO.
35 and 37 Cortlandt Street, New York